

## BCAT1 RABBIT PAB

货号: S217202

产品全名: BCAT1 兔多抗

基因符号 BCT1; PPI8; BCATC; ECA39; MECA39; PNAS121

**UNIPROT ID:** P54687 (Gene Accession - BC033864)

**背景:** This gene encodes the cytosolic form of the enzyme branched-chain amino acid transaminase. This enzyme catalyzes the reversible transamination of branched-chain alpha-keto acids to branched-chain L-amino acids essential for cell growth. Two different clinical disorders have been attributed to a defect of branched-chain amino acid transamination: hypervalinemia and hyperleucine-isoleucinemia. As there is also a gene encoding a mitochondrial form of this enzyme, mutations in either gene may contribute to these disorders. Alternatively spliced transcript variants have been described.

**抗原:** Fusion protein of human BCAT1

**经过测试的应用:** ELISA, WB, IHC

**推荐稀释比:** IHC: 50-200;WB: 500-2000;ELISA: 5000-10000

**种属反应性:** Rabbit

**克隆性:** Rabbit Polyclonal

**亚型:** Immunogen-specific rabbit IgG

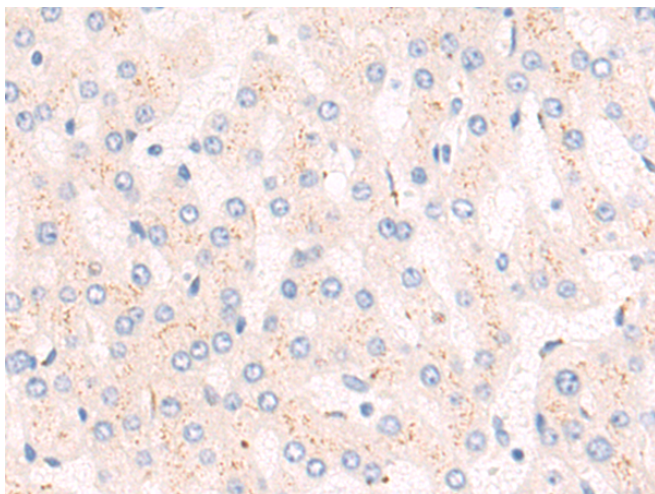
**纯化:** Antigen affinity purification

**种属反应性:** Human, Mouse

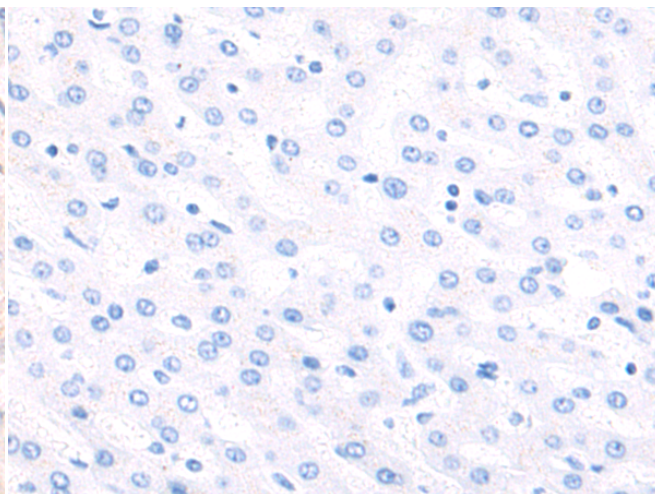
**成分:** PBS (without Mg<sup>2+</sup> and Ca<sup>2+</sup>), pH 7.4, 150 mM NaCl, 0.05% Sodium Azide and 40% glycerol

**研究领域:** Metabolism

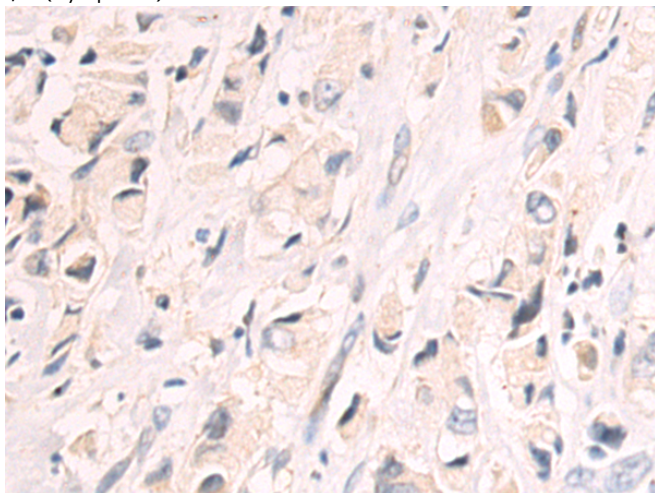
**储存和运输:** Store at -20°C. Avoid repeated freezing and thawing



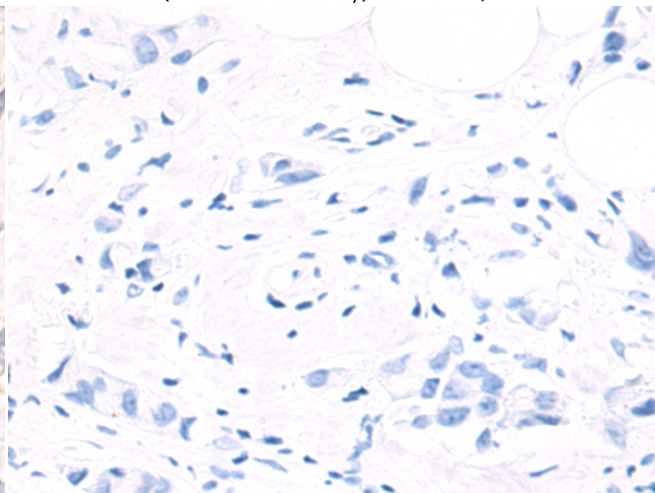
Immunohistochemistry analysis of paraffin embedded Human liver cancer tissue using 217202(BCAT1 Antibody) at a dilution of 1/55(Cytoplasm).



In comparison with the IHC on the left, the same paraffin-embedded Human liver cancer tissue is first treated with the fusion protein and then with 217202(Anti-BCAT1 Antibody) at dilution 1/55.



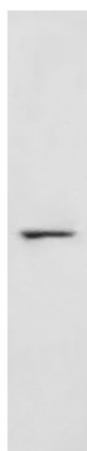
The image on the left is immunohistochemistry of paraffin-embedded Human breast cancer tissue using 217202(Anti-BCAT1 Antibody) at a dilution of 1/55.



In comparison with the IHC on the left, the same paraffin-embedded Human breast cancer tissue is first treated with fusion protein and then with D221976(Anti-BCAT1 Antibody) at dilution 1/55.

kDa

130 —  
95 —  
72 —  
55 —  
36 —  
28 —  
17 —



Gel: 8%SDS-PAGE, Lysate: 40 µg;  
Lane: Ramos cell lysate;  
Primary antibody: 217202(BCAT1 Antibody) at dilution 1/1000;  
Secondary antibody: HRP-conjugated Goat anti rabbit IgG at 1/5000 dilution;  
Exposure time: 1 minute



# Product Description

Pioneering GTPase and Oncogene Product Development since 2010

---