

BCAP31 RABBIT PAB

货号: S217200

产品全名: BCAP31 兔多抗

基因符号: CDM; BAP31; 6C6-AG; DXS1357E

UNIPROT ID: P51572 (Gene Accession - BC014323)

背景: This gene encodes a member of the B-cell receptor associated protein 31 superfamily. The encoded protein is a multi-pass transmembrane protein of the endoplasmic reticulum that is involved in the anterograde transport of membrane proteins from the endoplasmic reticulum to the Golgi and in caspase 8-mediated apoptosis. Microdeletions in this gene are associated with contiguous ABCD1/DXS1375E deletion syndrome (CADD5), a neonatal disorder. Alternative splicing of this gene results in multiple transcript variants. Two related pseudogenes have been identified on chromosome 16.

抗原: Fusion protein of human BCAP31

经过测试的应用: ELISA, WB, IHC

推荐稀释比: IHC: 50-200;WB: 500-2000;ELISA: 2000-5000

种属反应性: Rabbit

克隆性: Rabbit Polyclonal

亚型: Immunogen-specific rabbit IgG

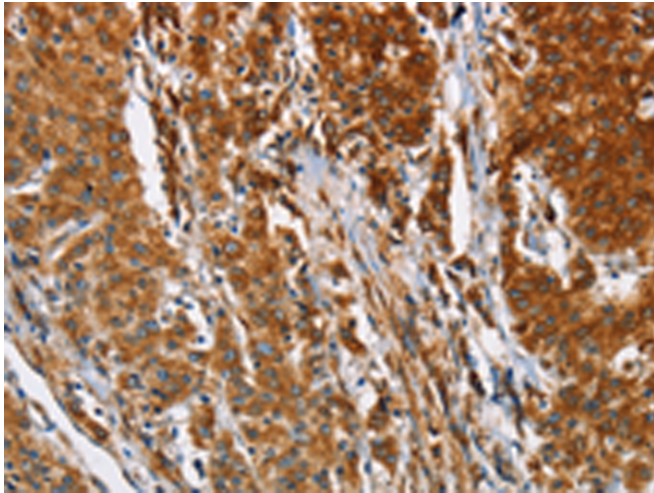
纯化: Antigen affinity purification

种属反应性: Human, Mouse

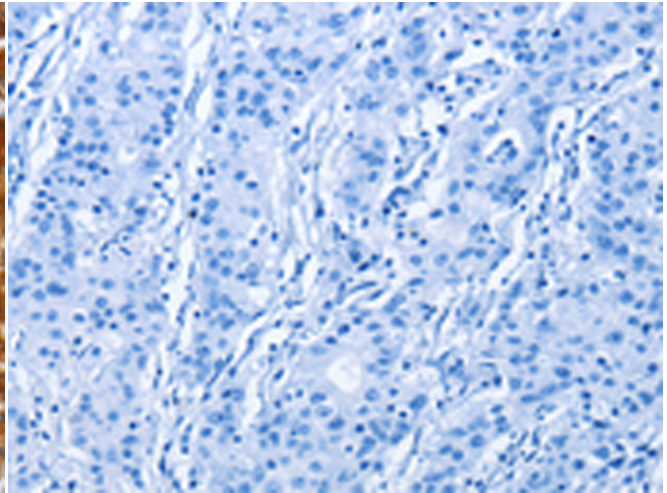
成分: PBS (without Mg²⁺ and Ca²⁺), pH 7.4, 150 mM NaCl, 0.05% Sodium Azide and 40% glycerol

研究领域: Cancer

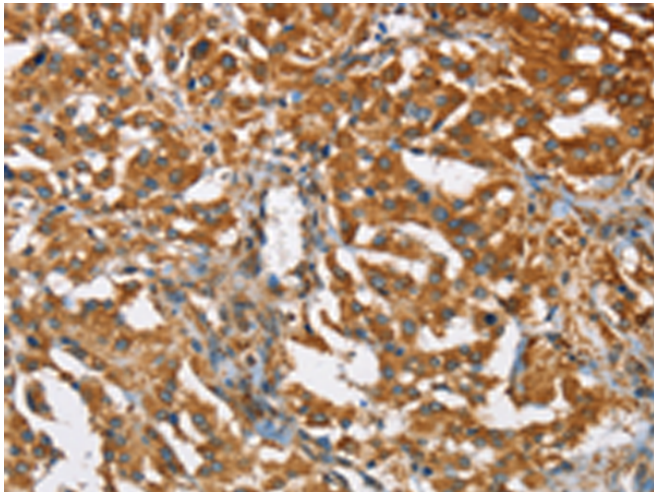
储存和运输: Store at -20°C. Avoid repeated freezing and thawing



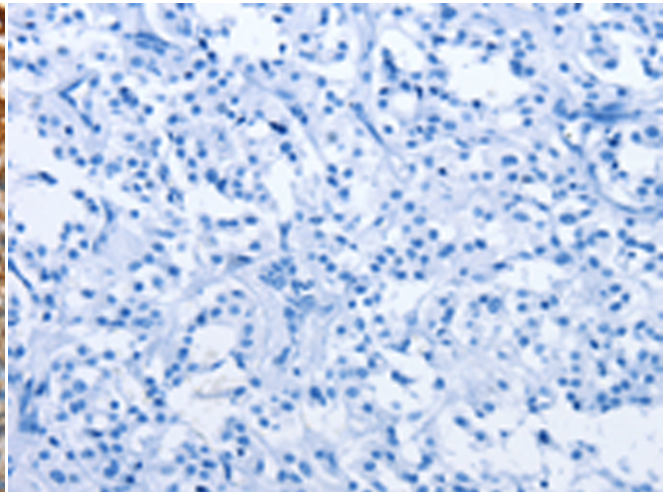
Immunohistochemistry analysis of paraffin embedded Human gastric cancer tissue using 217200(BCAP31 Antibody) at a dilution of 1/30(Cytoplasm).



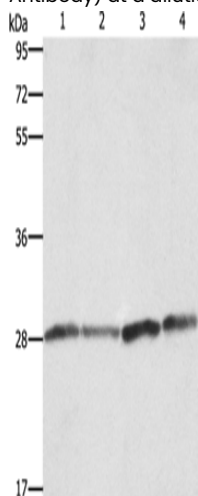
In comparison with the IHC on the left, the same paraffin-embedded Human gastric cancer tissue is first treated with the fusion protein and then with 217200(Anti-BCAP31 Antibody) at dilution 1/30.



The image on the left is immunohistochemistry of paraffin-embedded Human thyroid cancer tissue using 217200(Anti-BCAP31 Antibody) at a dilution of 1/30.



In comparison with the IHC on the left, the same paraffin-embedded Human thyroid cancer tissue is first treated with fusion protein and then with D221972(Anti-BCAP31 Antibody) at dilution 1/30.



Gel: 10%SDS-PAGE, Lysate: 40 µg;
Lane 1-4: Human placenta tissue, A549 cells, Raji cells, hela cells;
Primary antibody: 217200(BCAP31 Antibody) at dilution 1/750;
Secondary antibody: Goat anti rabbit IgG at 1/8000 dilution;
Exposure time: 1 second



Product Description

Pioneering GTPase and Oncogene Product Development since 2010
