

BCAN RABBIT PAB

货号: S218370

产品全名: BCAN 兔多抗

基因符号: BEHAB; CSPG7

UNIPROT ID: Q96GW7 (Gene Accession - BC022938)

背景: This gene encodes a member of the lectican family of chondroitin sulfate proteoglycans that is specifically expressed in the central nervous system. This protein is developmentally regulated and may function in the formation of the brain extracellular matrix. This protein is highly expressed in gliomas and may promote the growth and cell motility of brain tumor cells. Alternate splicing results in multiple transcript variants. [provided by RefSeq, Sep 2011]

抗原: Fusion protein of human BCAN

经过测试的应用: ELISA, IHC

推荐稀释比: IHC: 50-200; ELISA: 5000-10000

种属反应性: Rabbit

克隆性: Rabbit Polyclonal

亚型: Immunogen-specific rabbit IgG

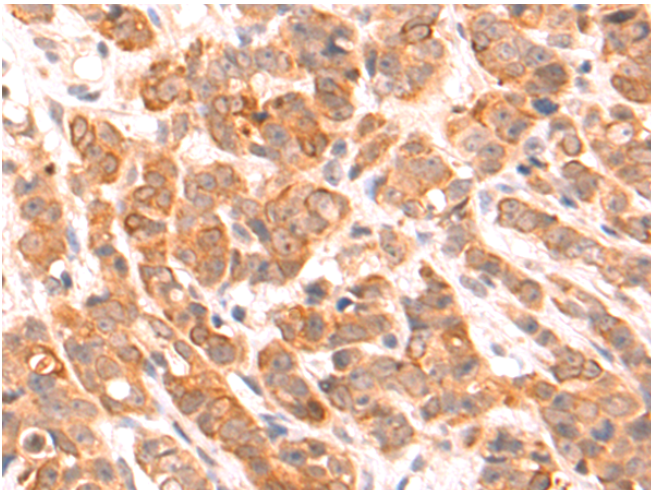
纯化: Antigen affinity purification

种属反应性: Human, Mouse, Rat

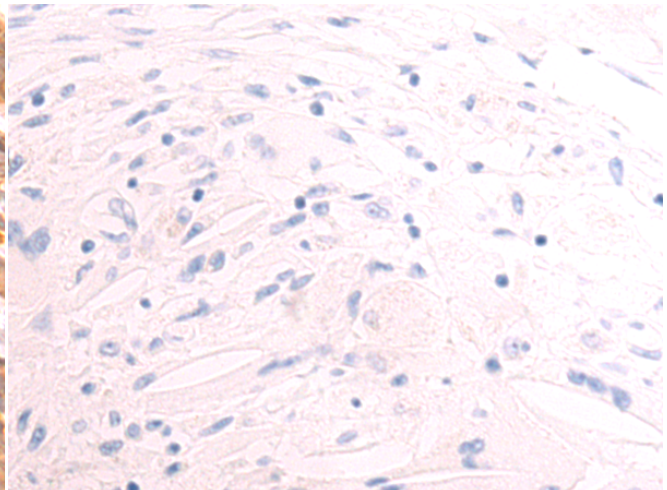
成分: PBS (without Mg²⁺ and Ca²⁺), pH 7.4, 150 mM NaCl, 0.05% Sodium Azide and 40% glycerol

研究领域: Signal Transduction, Neuroscience

储存和运输: Store at -20°C. Avoid repeated freezing and thawing



Immunohistochemistry analysis of paraffin embedded Human breast cancer tissue using 218370(BCAN Antibody) at a dilution of 1/60(Secreted).



In comparison with the IHC on the left, the same paraffin-embedded Human breast cancer tissue is first treated with the fusion protein and then with 218370(Anti-BCAN Antibody) at dilution 1/60.