

BBX RABBIT PAB

货号: S218354

产品全名: BBX 兔多抗

基因符号: HBP2; ARTC1; MDS001; HSPC339

UNIPROT ID: Q8WY36 (Gene Accession - BC131718)

背景: Transcription factor that is necessary for cell cycle progression from G1 to S phase.

抗原: Fusion protein of human BBX

经过测试的应用: ELISA, IHC

推荐稀释比: IHC: 30-150; ELISA: 5000-10000

种属反应性: Rabbit

克隆性: Rabbit Polyclonal

亚型: Immunogen-specific rabbit IgG

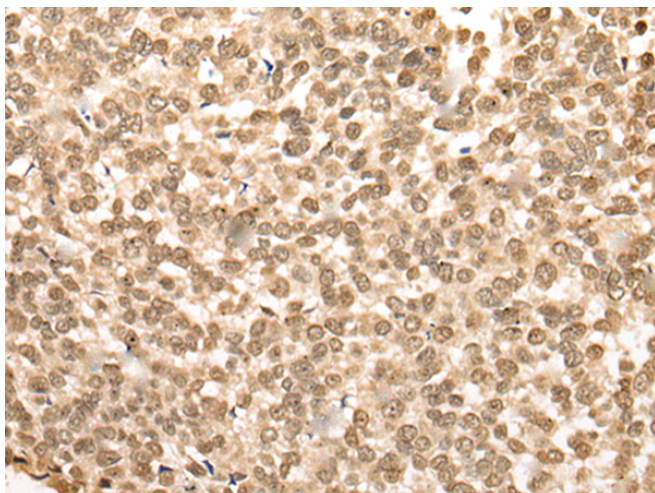
纯化: Antigen affinity purification

种属反应性: Human

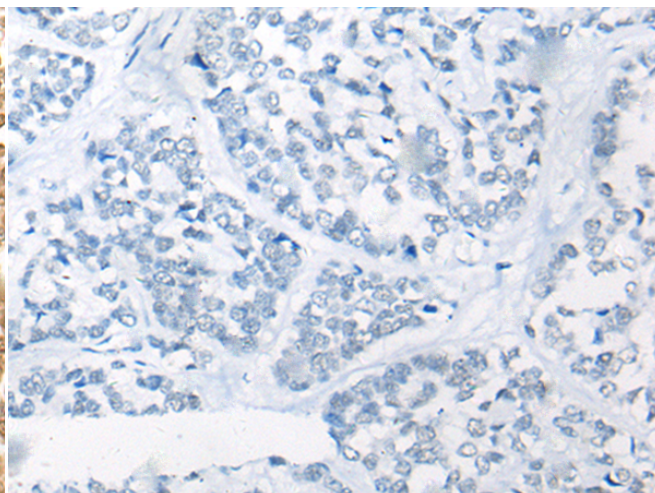
成分: PBS (without Mg²⁺ and Ca²⁺), pH 7.4, 150 mM NaCl, 0.05% Sodium Azide and 40% glycerol

研究领域: Epigenetics and Nuclear Signaling

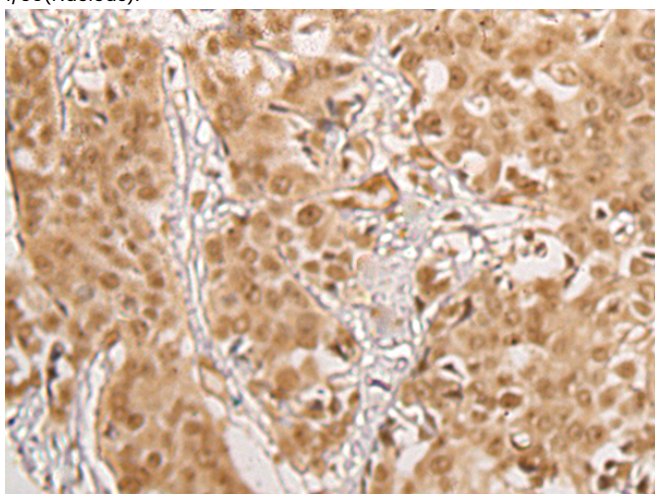
储存和运输: Store at -20°C. Avoid repeated freezing and thawing



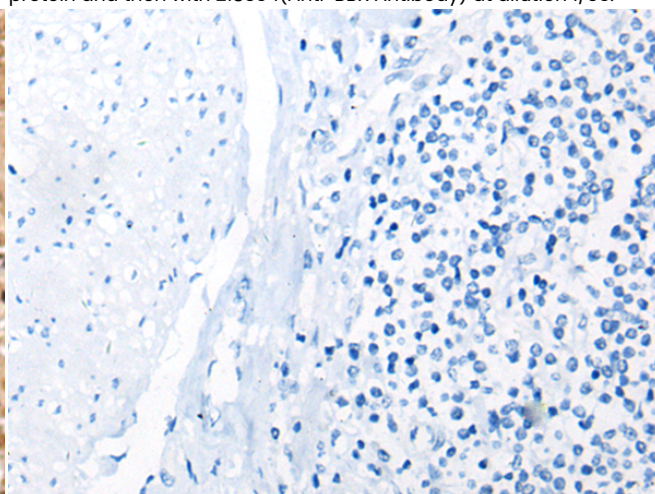
Immunohistochemistry analysis of paraffin embedded Human esophagus cancer tissue using 218354 (BBX Antibody) at a dilution of 1/35 (Nucleus).



In comparison with the IHC on the left, the same paraffin-embedded Human esophagus cancer tissue is first treated with the fusion protein and then with 218354 (Anti-BBX Antibody) at dilution 1/35.



The image on the left is immunohistochemistry of paraffin-embedded Human prostate cancer tissue using 218354 (Anti-BBX Antibody) at a dilution of 1/35.



In comparison with the IHC on the left, the same paraffin-embedded Human prostate cancer tissue is first treated with fusion protein and then with D224238 (Anti-BBX Antibody) at dilution 1/35.



Product Description

Pioneering GTPase and Oncogene Product Development since 2010
