

## BBOX1 RABBIT PAB

货号: S218352

产品全名: BBOX1 兔多抗

基因符号: BBH; BBOX; G-BBH; gamma-BBH

UNIPROT ID: O75936 (Gene Accession - BC011034)

背景: This gene encodes gamma butyrobetaine hydroxylase which catalyzes the formation of L-carnitine from gamma-butyrobetaine, the last step in the L-carnitine biosynthetic pathway. Carnitine is essential for the transport of activated fatty acids across the mitochondrial membrane during mitochondrial beta-oxidation.

抗原: Fusion protein of human BBOX1

经过测试的应用: ELISA, WB, IHC

推荐稀释比: IHC: 30-150;WB: 500-2000;ELISA: 5000-10000

种属反应性: Rabbit

克隆性: Rabbit Polyclonal

亚型: Immunogen-specific rabbit IgG

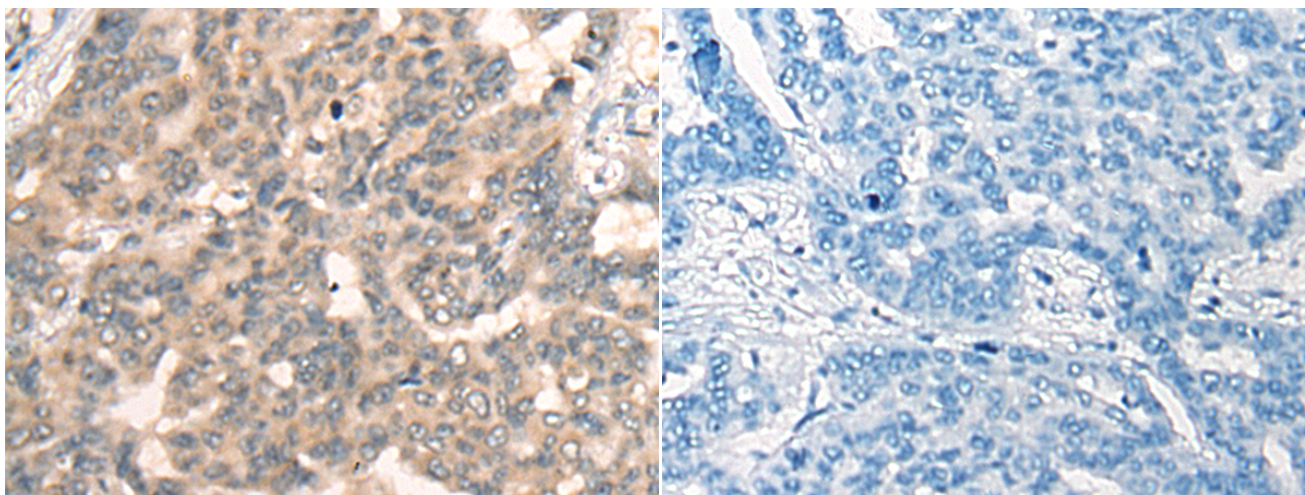
纯化: Antigen affinity purification

种属反应性: Human, Mouse, Rat

成分: PBS (without Mg<sup>2+</sup> and Ca<sup>2+</sup>), pH 7.4, 150 mM NaCl, 0.05% Sodium Azide and 40% glycerol

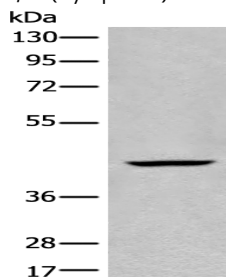
研究领域: Metabolism

储存和运输: Store at -20°C. Avoid repeated freezing and thawing



Immunohistochemistry analysis of paraffin embedded Human liver cancer tissue using 218352(BBOX1 Antibody) at a dilution of 1/45(Cytoplasm).

In comparison with the IHC on the left, the same paraffin-embedded Human liver cancer tissue is first treated with the fusion protein and then with 218352(Anti-BBOX1 Antibody) at dilution 1/45.



Gel: 8%SDS-PAGE, Lysate: 40 µg;

Lane: Human kidney tissue lysate;

Primary antibody: 218352(BBOX1 Antibody) at dilution 1/650;

Secondary antibody: Goat anti rabbit IgG at 1/8000 dilution;

Exposure time: 10 seconds