

BAZ1A RABBIT PAB

货号: S220030

产品全名: BAZ1A 兔多抗

基因符号: ACF1; WALP1; hACF1; WCRF180

UNIPROT ID: Q9NRL2 (Gene Accession - NP_038476)

背景: Bromodomain adjacent to zinc finger domain protein 1A is a protein that in humans is encoded by the BAZ1A gene. Component of the ACF complex, an ATP-dependent chromatin remodeling complex that regulates spacing of nucleosomes using ATP to generate evenly spaced nucleosomes along the chromatin. The ATPase activity of the complex is regulated by the length of flanking DNA. Also involved in facilitating the DNA replication process. BAZ1A is the accessory, non-catalytic subunit of the complex which can enhance and direct the process provided by the ATPase subunit, SMARCA5, probably through targeting pericentromeric heterochromatin in late S phase.

抗原: Synthetic peptide of human BAZ1A

经过测试的应用: ELISA, IHC

推荐稀释比: IHC: 25-100; ELISA: 1000-2000

种属反应性: Rabbit

克隆性: Rabbit Polyclonal

亚型: Immunogen-specific rabbit IgG

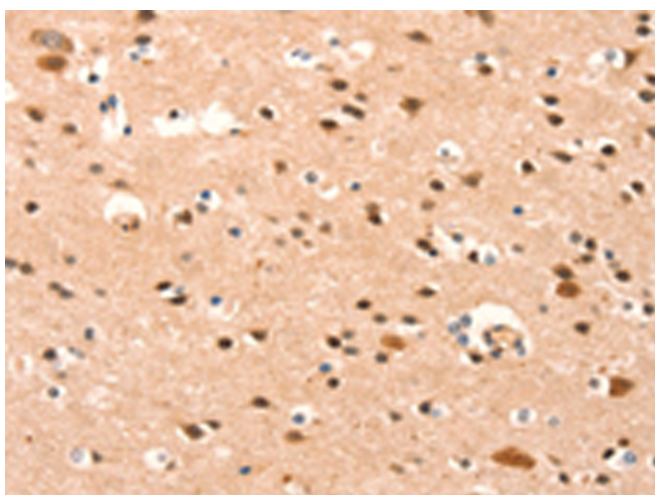
纯化: Antigen affinity purification

种属反应性: Human, Mouse

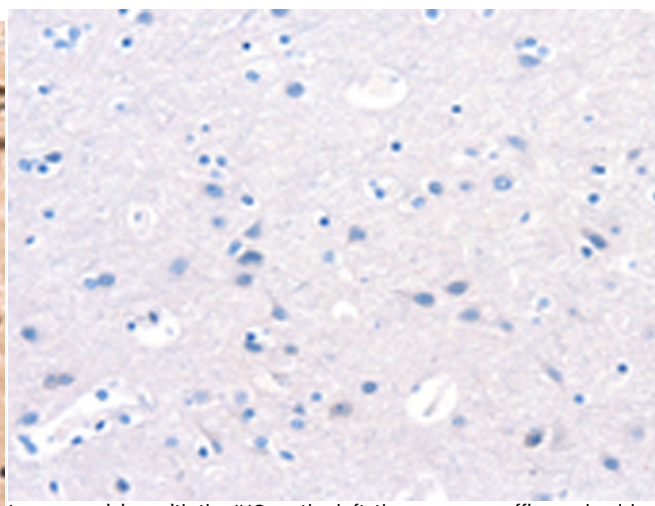
成分: PBS (without Mg²⁺ and Ca²⁺), pH 7.4, 150 mM NaCl, 0.05% Sodium Azide and 40% glycerol

研究领域: Epigenetics and Nuclear Signaling

储存和运输: Store at -20°C. Avoid repeated freezing and thawing



Immunohistochemistry analysis of paraffin embedded Human brain tissue using 220030 (BAZ1A Antibody) at a dilution of 1/25 (Nucleus).



In comparison with the IHC on the left, the same paraffin-embedded Human brain tissue is first treated with the synthetic peptide and then with 220030 (Anti-BAZ1A Antibody) at dilution 1/25.