

## BATF RABBIT PAB

货号: S218351

产品全名: BATF 兔多抗

基因符号 SFA2; B-ATF; BATF1; SFA-2

**UNIPROT ID:** Q16520 (Gene Accession - BC032294 )

**背景:** The protein encoded by this gene is a nuclear basic leucine zipper protein that belongs to the AP-1/ATF superfamily of transcription factors. The leucine zipper of this protein mediates dimerization with members of the Jun family of proteins. This protein is thought to be a negative regulator of AP-1/ATF transcriptional events.

**抗原:** Full length fusion 蛋白

**经过测试的应用:** ELISA, IHC

**推荐稀释比:** IHC: 30-150; ELISA: 5000-10000

**种属反应性:** Rabbit

**克隆性:** Rabbit Polyclonal

**亚型:** Immunogen-specific rabbit IgG

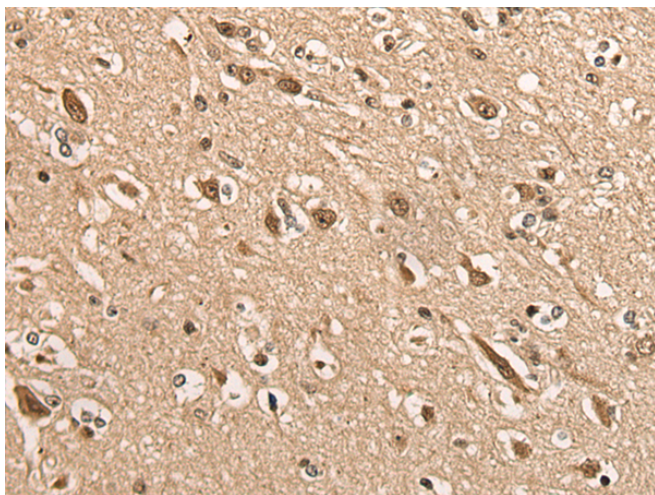
**纯化:** Antigen affinity purification

**种属反应性:** Human, Mouse, Rat

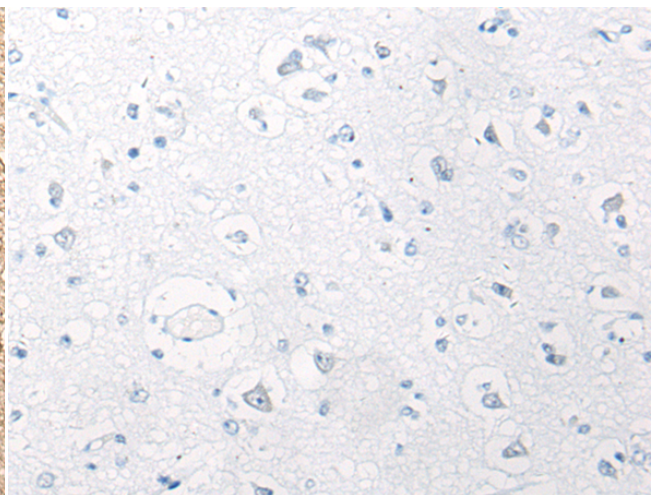
**成分:** PBS (without Mg<sup>2+</sup> and Ca<sup>2+</sup>), pH 7.4, 150 mM NaCl, 0.05% Sodium Azide and 40% glycerol

**研究领域:** Epigenetics and Nuclear Signaling

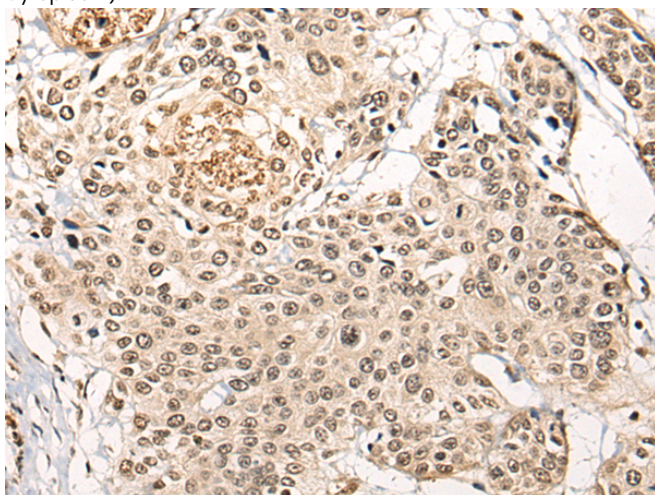
**储存和运输:** Store at -20°C. Avoid repeated freezing and thawing



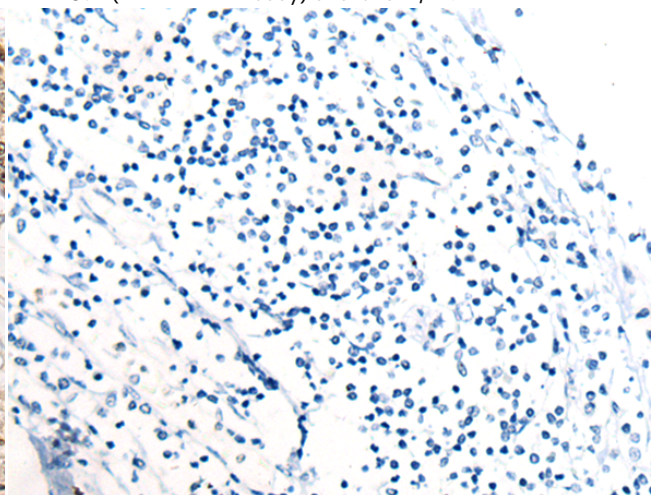
Immunohistochemistry analysis of paraffin embedded Human brain tissue using 218351(BATF Antibody) at a dilution of 1/45(Nucleus and Cytoplasm).



In comparison with the IHC on the left, the same paraffin-embedded Human brain tissue is first treated with the fusion protein and then with 218351(Anti-BATF Antibody) at dilution 1/45.



The image on the left is immunohistochemistry of paraffin-embedded Human prostate cancer tissue using 218351(Anti-BATF Antibody) at a dilution of 1/45.



In comparison with the IHC on the left, the same paraffin-embedded Human prostate cancer tissue is first treated with fusion protein and then with D224232(Anti-BATF Antibody) at dilution 1/45.



# Product Description

Pioneering GTPase and Oncogene Product Development since 2010

---