

BAT3 RABBIT MAB

货号: N261913

产品全名: BAT3 兔单克隆抗体

基因符号 BAG6; BAT 3; Scythe

UNIPROT ID: P46379

背景: Chaperone that plays a key role in various processes such as apoptosis, insertion of tail-anchored (TA) membrane proteins to the endoplasmic reticulum membrane and regulation of chromatin. Acts in part by regulating stability of proteins and their degradation by the proteasome. Participates in endoplasmic reticulum stress-induced apoptosis via its interaction with AIFM1/AIF by regulating AIFM1/AIF stability and preventing its degradation.

抗原: A synthetic peptide of human BAT3

经过测试的应用: WB, ICC/IF

推荐稀释比: WB: 1/500-1/1000 IF: 1/50-1/200

种属反应性: Rabbit

克隆性: Rabbit Monoclonal

克隆编号: R04-1C1

分子量: Calculated MW: 119 kDa; Observed MW: 150 kDa

亚型: IgG

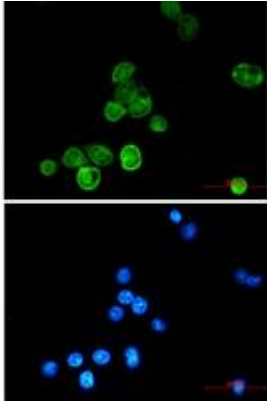
纯化: Affinity Purified

种属反应性: Human, Mouse and Rat

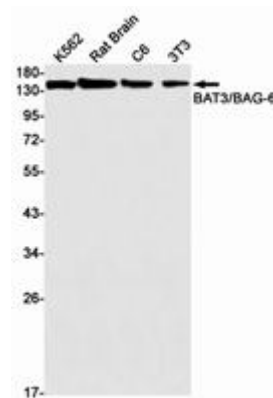
成分: PBS (without Mg²⁺ and Ca²⁺), pH 7.3 containing 50% glycerol, 0.5% BSA and 0.02% sodium azide

研究领域: Cell Biology

储存和运输: Store at -20°C. Avoid repeated freezing and thawing



Immunocytochemistry analysis of BAT3/BAG6 (green) in MCF-7 using BAT3/BAG6 antibody, and DAPI (blue)



Western blot analysis of BAT3/BAG6 in K562, rat Brain, C6, 3T3 lysates using BAT3 antibody.