

BARX1 RABBIT PAB

货号: S218349

产品全名: BARX1 兔多抗

基因符号

UNIPROT ID: Q9HBU1 (Gene Accession - BC009458)

背景: This gene encodes a member of the Bar subclass of homeobox transcription factors. Studies of the mouse and chick homolog suggest the encoded protein may play a role in developing teeth and craniofacial mesenchyme of neural crest origin. The protein may also be associated with differentiation of stomach epithelia.

抗原: Fusion protein of human BARX1

经过测试的应用: ELISA, WB, IHC

推荐稀释比: IHC: 25-100;WB: 200-1000;ELISA: 5000-10000

种属反应性: Rabbit

克隆性: Rabbit Polyclonal

亚型: Immunogen-specific rabbit IgG

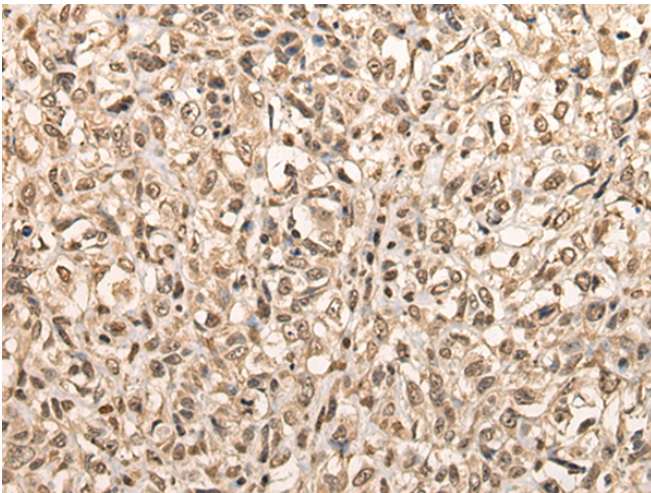
纯化: Antigen affinity purification

种属反应性: Human, Mouse

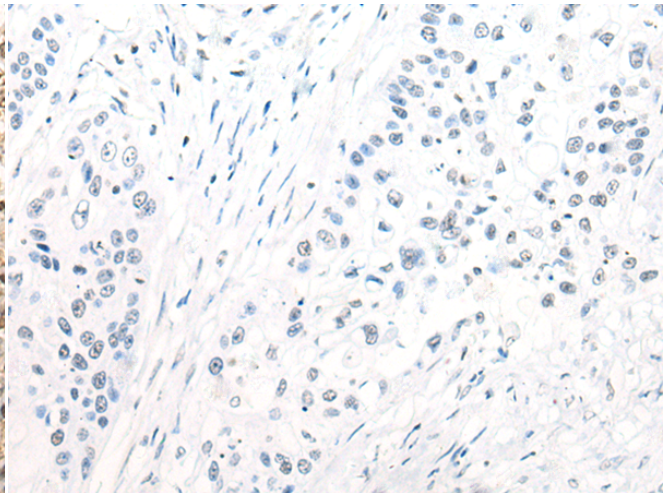
成分: PBS (without Mg²⁺ and Ca²⁺), pH 7.4, 150 mM NaCl, 0.05% Sodium Azide and 40% glycerol

研究领域: Developmental Biology

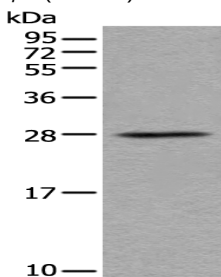
储存和运输: Store at -20°C. Avoid repeated freezing and thawing



Immunohistochemistry analysis of paraffin embedded Human lung cancer tissue using 218349(BARX1 Antibody) at a dilution of 1/30(Nucleus).



In comparison with the IHC on the left, the same paraffin-embedded Human lung cancer tissue is first treated with the fusion protein and then with 218349(Anti-BARX1 Antibody) at dilution 1/30.



Gel: 12%SDS-PAGE, Lysate: 40 µg;
Lane: Mouse stomach tissue lysate;
Primary antibody: 218349(BARX1 Antibody) at dilution 1/300;
Secondary antibody: Goat anti rabbit IgG at 1/8000 dilution;
Exposure time: 1 minute