

BARX1 RABBIT MAB

货号: N263231

产品全名: BarX1 兔单克隆抗体

基因符号 Homeobox protein BarH-like 1

UNIPROT ID: Q9HBUI

背景: Transcription factor, which is involved in craniofacial development, in odontogenesis and in stomach organogenesis.

抗原: A synthetic peptide of human BarX1

经过测试的应用: WB,IP

推荐稀释比: WB: 1/500-1/1000 IP: 1/20

种属反应性: Rabbit

克隆性: Rabbit Monoclonal

克隆编号: R01-3A3

分子量: Calculated MW: 27 kDa; Observed MW: 32 kDa

亚型: IgG

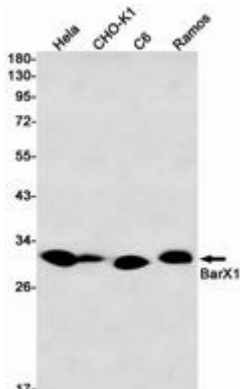
纯化: Affinity Purified

种属反应性: Human,Rat,Hamster

成分: PBS (without Mg²⁺ and Ca²⁺), pH 7.3 containing 50% glycerol, 0.5% BSA and 0.02% sodium azide

研究领域: Epigenetics and Nuclear Signaling

储存和运输: Store at -20°C. Avoid repeated freezing and thawing



Western blot analysis of BarX1 in Hela, CHO-K1, C6, Ramos lysates using BarX1 antibody.