

## BAP31 RABBIT MAB

货号: N261912

产品全名: BAP31 兔单克隆抗体

基因符号 BCAP31; BAP31; DXS1357E; B-cell receptor-associated protein 31; BCR-associated protein 31; Bap31; 6C6-AG tumor-associated antigen; Protein CDM; p28

**UNIPROT ID:** P51572

背景: May play a role in anterograde transport of membrane proteins from the endoplasmic reticulum to the Golgi. May be involved in CASP8-mediated apoptosis.

抗原: A synthetic peptide of human BAP31

经过测试的应用: WB,IHC-F,IHC-P,ICC/IF

推荐稀释比: WB: 1/500-1/1000 IHC: 1/50-1/100 IF: 1/50-1/200

种属反应性: Rabbit

克隆性: Rabbit Monoclonal

克隆编号: R03-9F1

分子量: Calculated MW: 28 kDa; Observed MW: 28 kDa

亚型: IgG

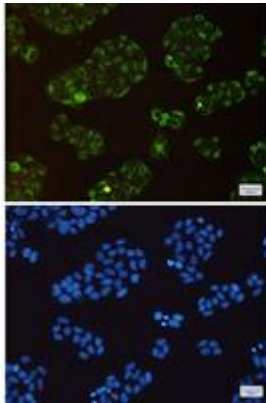
纯化: Affinity Purified

种属反应性: Human,Mouse

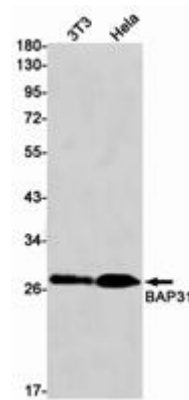
成分: PBS (without Mg<sup>2+</sup> and Ca<sup>2+</sup>), pH 7.3 containing 50% glycerol, 0.5% BSA and 0.02% sodium azide

研究领域: Cell Biology

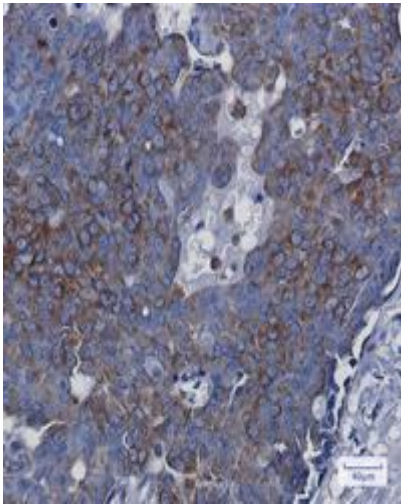
储存和运输: Store at -20°C. Avoid repeated freezing and thawing



Immunocytochemistry analysis of BAP31 (green) in HeLa using BAP31 antibody, and DAPI (blue)



Western blot analysis of BAP31 in K562, HeLa lysates using BAP31 antibody.



Immunohistochemistry analysis of paraffin-embedded Human breast cancer using BAP31 antibody. High-pressure and temperature Sodium Citrate pH 6.0 was used for antigen retrieval.