

BAG2 RABBIT PAB

货号: S221250

产品全名: BAG2 兔多抗

基因符号: BAG-2; dJ41711.2

UNIPROT ID: O95816 (Gene Accession - NP_004273)

背景: BAG proteins compete with Hip for binding to the Hsc70/Hsp70 ATPase domain and promote substrate release. All the BAG proteins have an approximately 45-amino acid BAG domain near the C terminus but differ markedly in their N-terminal regions. The predicted BAG2 protein contains 211 amino acids. The BAG domains of BAG1, BAG2, and BAG3 interact specifically with the Hsc70 ATPase domain in vitro and in mammalian cells. All 3 proteins bind with high affinity to the ATPase domain of Hsc70 and inhibit its chaperone activity in a Hip-repressible manner.

抗原: Synthetic peptide of human BAG2

经过测试的应用: ELISA, WB, IHC

推荐稀释比: IHC: 30-150;WB: 500-2000;ELISA: 5000-10000

种属反应性: Rabbit

克隆性: Rabbit Polyclonal

亚型: Immunogen-specific rabbit IgG

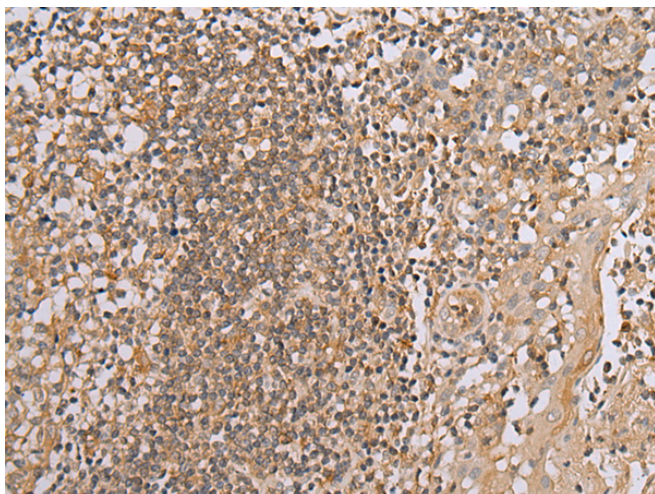
纯化: Antigen affinity purification

种属反应性: Human

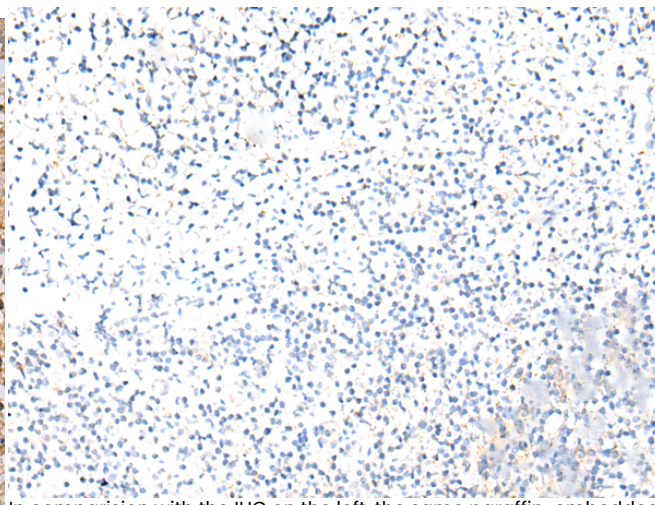
成分: PBS (without Mg²⁺ and Ca²⁺), pH 7.4, 150 mM NaCl, 0.05% Sodium Azide and 40% glycerol

研究领域: Signal Transduction, Cancer

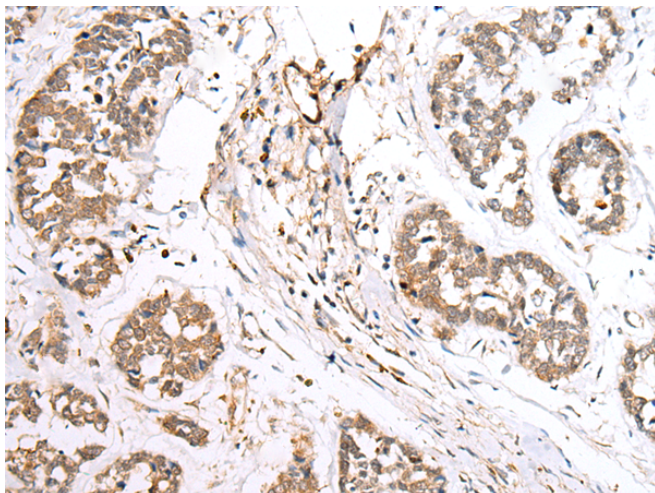
储存和运输: Store at -20°C. Avoid repeated freezing and thawing



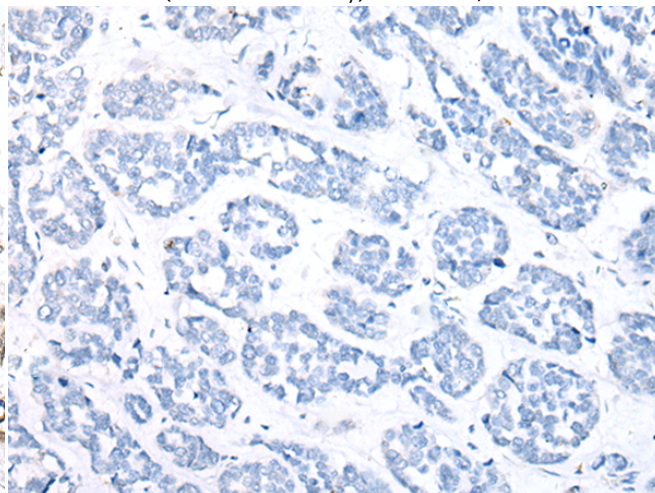
Immunohistochemistry analysis of paraffin embedded Human tonsil tissue using 221250(BAG2 Antibody) at a dilution of 1/40(Cytoplasm).



In comparison with the IHC on the left, the same paraffin-embedded Human tonsil tissue is first treated with the synthetic peptide and then with 221250(Anti-BAG2 Antibody) at dilution 1/40.

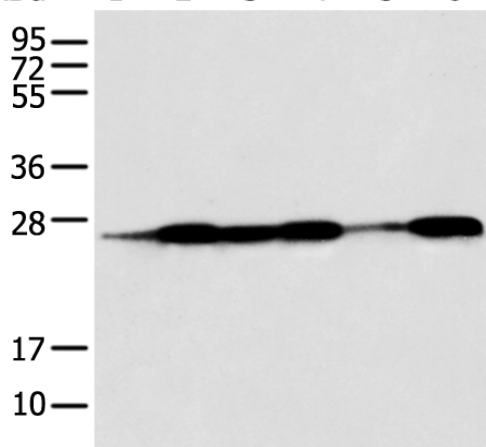


The image on the left is immunohistochemistry of paraffin-embedded Human esophagus cancer tissue using 221250(Anti-BAG2 Antibody) at a dilution of 1/40.



In comparison with the IHC on the left, the same paraffin-embedded Human esophagus cancer tissue is first treated with synthetic peptide and then with D262766(Anti-BAG2 Antibody) at dilution 1/40.

kDa 1 2 3 4 5 6



Gel: 12%SDS-PAGE, Lysate: 40 µg;
 Lane 1-6: Human fetal muscle tissue, HEPG2, Jurkat, Hela, A431 and A549 cell;
 Primary antibody: 221250(BAG2 Antibody) at dilution 1/550;
 Secondary antibody: Goat anti rabbit IgG at 1/8000 dilution;
 Exposure time: 3 seconds



Product Description

Pioneering GTPase and Oncogene Product Development since 2010
