

BAG1 RABBIT PAB

货号: S216291

产品全名: BAG1 兔多抗

基因符号 HAP; BAG-1; RAP46

UNIPROT ID: Q99933 (Gene Accession - BC001936)

背景: The oncogene BCL2 is a membrane protein that blocks a step in a pathway leading to apoptosis or programmed cell death. The protein encoded by this gene binds to BCL2 and is referred to as BCL2-associated athanogene. It enhances the anti-apoptotic effects of BCL2 and represents a link between growth factor receptors and anti-apoptotic mechanisms. Multiple protein isoforms are encoded by this mRNA through the use of a non-AUG (CUG) initiation codon, and three alternative downstream AUG initiation codons. A related pseudogene has been defined on chromosome X.

抗原: Fusion protein of human BAG1

经过测试的应用: ELISA, WB, IHC

推荐稀释比: IHC: 50-200;WB: 500-2000;ELISA: 2000-5000

种属反应性: Rabbit

克隆性: Rabbit Polyclonal

亚型: Immunogen-specific rabbit IgG

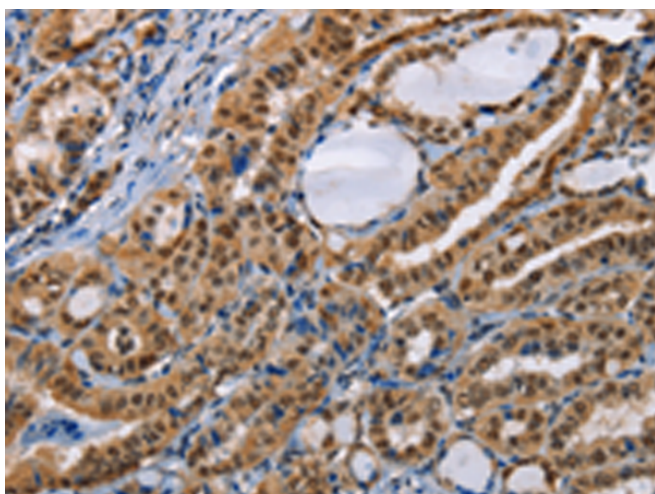
纯化: Antigen affinity purification

种属反应性: Human

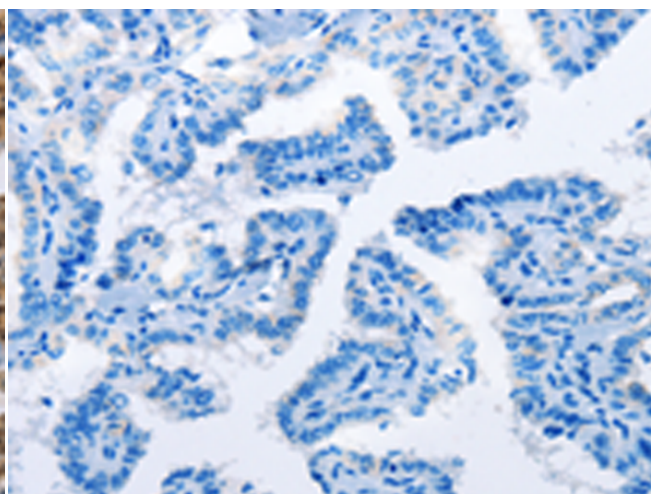
成分: PBS (without Mg²⁺ and Ca²⁺), pH 7.4, 150 mM NaCl, 0.05% Sodium Azide and 40% glycerol

研究领域: Cancer, Cardiovascular

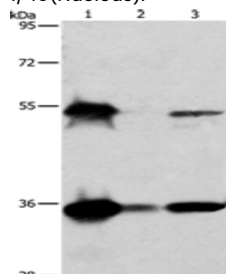
储存和运输: Store at -20°C. Avoid repeated freezing and thawing



Immunohistochemistry analysis of paraffin embedded Human thyroid cancer tissue using 216291(BAG1 Antibody) at a dilution of 1/40(Nucleus).



In comparison with the IHC on the left, the same paraffin-embedded Human thyroid cancer tissue is first treated with the fusion protein and then with 216291(Anti-BAG1 Antibody) at dilution 1/40.



Gel: 8%SDS-PAGE, Lysate: 50 µg;

Lane 1-3: HeLa cells, K562 cells, Raji cells;

Primary antibody: 216291(BAG1 Antibody) at dilution 1/750;

Secondary antibody: Goat anti rabbit IgG at 1/8000 dilution;

Exposure time: 2 seconds