

B3GALT6 RABBIT PAB

货号: S221601

产品全名: B3GALT6 兔多抗

基因符号: EDSP2; SEMDJL1; beta3GalT6

UNIPROT ID: Q96L58 (Gene Accession - NP_542172)

背景: The enzyme encoded by this intronless gene is a beta-1,3-galactosyltransferase found in the medial Golgi apparatus, where it catalyzes the transfer of galactose from UDP-galactose to substrates containing a terminal beta-linked galactose moiety. The encoded enzyme has a particular affinity for galactose-beta-1,4-xylose found in the linker region of glycosamines. This enzyme is required for glycosaminoglycan synthesis.

抗原: Synthetic peptide of human B3GALT6

经过测试的应用: ELISA, IHC

推荐稀释比: IHC: 25-100; ELISA: 5000-10000

种属反应性: Rabbit

克隆性: Rabbit Polyclonal

亚型: Immunogen-specific rabbit IgG

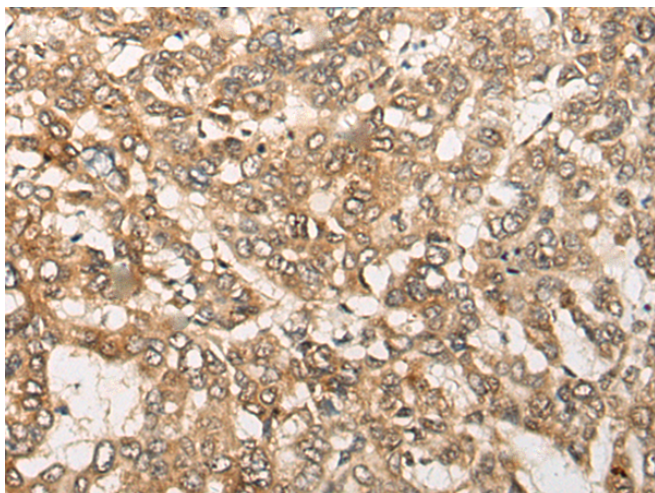
纯化: Antigen affinity purification

种属反应性: Human, Mouse

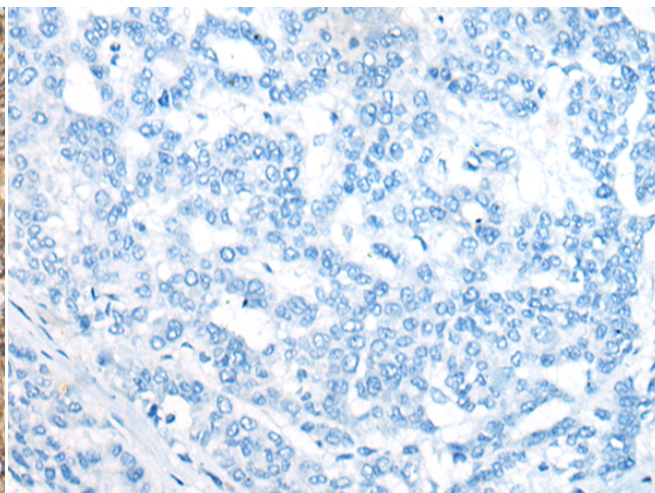
成分: PBS (without Mg²⁺ and Ca²⁺), pH 7.4, 150 mM NaCl, 0.05% Sodium Azide and 40% glycerol

研究领域: Cell Biology

储存和运输: Store at -20°C. Avoid repeated freezing and thawing



Immunohistochemistry analysis of paraffin embedded Human liver cancer tissue using 221601 (B3GALT6 Antibody) at a dilution of 1/20 (Cell membrane).



In comparison with the IHC on the left, the same paraffin-embedded Human liver cancer tissue is first treated with the synthetic peptide and then with 221601 (Anti-B3GALT6 Antibody) at dilution 1/20.