

## B3GALT2 RABBIT PAB

货号: N225248

产品全名: B3GALT2 兔多抗

基因符号 B3GALT2; Beta-1; 3-galactosyltransferase 2; Beta-1; 3-GalTase 2; Beta3Gal-T2; Beta3GalT2; UDP-galactose:2-acetamido-2-deoxy-D-glucose 3beta-galactosyltransferase 2

**UNIPROT ID:** O43825

背景: Beta-1,3-galactosyltransferase that transfers galactose from UDP-galactose to substrates with a terminal beta-N-acetylglucosamine (beta-GlcNAc) residue.

抗原: The antiserum was produced against synthesized peptide derived from human B3GALT2. AA range:373-422

经过测试的应用: IHC-P,IHC-F,ICC/IF,ELISA

推荐稀释比: IHC: 1/50-1/100 IF: 1/50-1/200 ELISA: 1/10000

种属反应性: Rabbit

克隆性: Rabbit Polyclonal

分子量: -

亚型: IgG

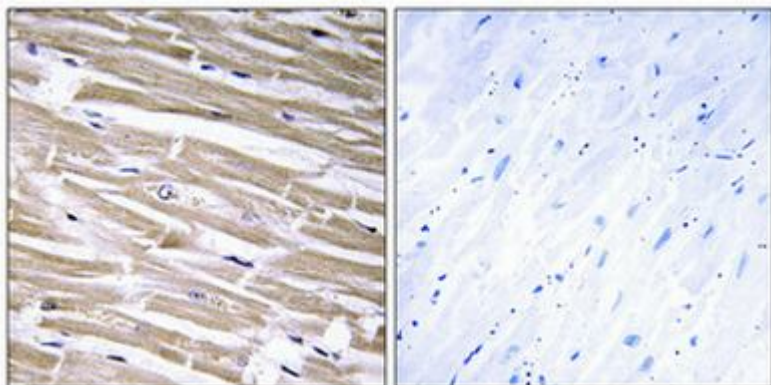
纯化: Affinity Purified

种属反应性: Human,Mouse

成分: PBS (without Mg<sup>2+</sup> and Ca<sup>2+</sup>), pH 7.3 containing 50% glycerol, 0.5% BSA and 0.02% sodium azide

研究领域: Cell Biology

储存和运输: Store at -20°C. Avoid repeated freezing and thawing



Immunohistochemistry analysis of paraffin-embedded Human heart using B3GALT2 antibody. High-pressure and temperature Tris-EDTA pH 8.0 was used for antigen retrieval. Sample with blocking peptide on the right.



# Product Description

Pioneering GTPase and Oncogene Product Development since 2010

---