

## B2M RABBIT PAB

货号: S216354

产品全名: B2M 兔多抗

基因符号: IMD43

**UNIPROT ID:** P61769 (Gene Accession - BC032589)

**背景:** This gene encodes a serum protein found in association with the major histocompatibility complex (MHC) class I heavy chain on the surface of nearly all nucleated cells. The protein has a predominantly beta-pleated sheet structure that can form amyloid fibrils in some pathological conditions. The encoded antimicrobial protein displays antibacterial activity in amniotic fluid. A mutation in this gene has been shown to result in hypercatabolic hypoproteinemia.

**抗原:** Fusion protein of human B2M

**经过测试的应用:** ELISA, WB, IHC

**推荐稀释比:** IHC: 50-200;WB: 1000-5000;ELISA: 5000-10000

**种属反应性:** Rabbit

**克隆性:** Rabbit Polyclonal

**亚型:** Immunogen-specific rabbit IgG

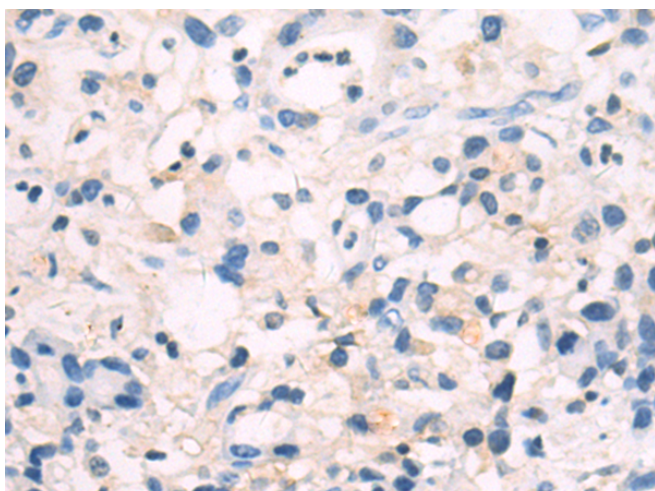
**纯化:** Antigen affinity purification

**种属反应性:** Human

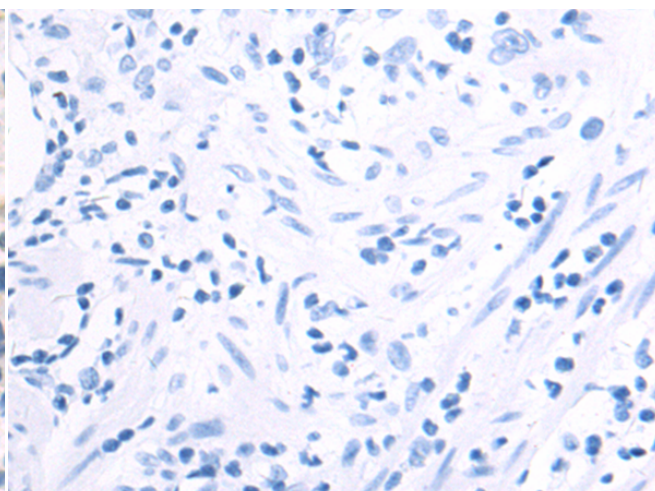
**成分:** PBS (without Mg<sup>2+</sup> and Ca<sup>2+</sup>), pH 7.4, 150 mM NaCl, 0.05% Sodium Azide and 40% glycerol

**研究领域:** Cancer, Cardiovascular

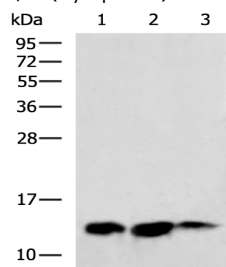
**储存和运输:** Store at -20°C. Avoid repeated freezing and thawing



Immunohistochemistry analysis of paraffin embedded Human gastric cancer tissue using 216354 (B2M Antibody) at a dilution of 1/80 (Cytoplasm).



In comparison with the IHC on the left, the same paraffin-embedded Human gastric cancer tissue is first treated with the fusion protein and then with 216354 (Anti-B2M Antibody) at dilution 1/80.



Gel: 12%SDS-PAGE, Lysate: 40 µg;

Lane 1-3: HepG2, HeLa, 293T cell lysates;

Primary antibody: 216354 (B2M Antibody) at dilution 1/1000;

Secondary antibody: HRP-conjugated Goat anti rabbit IgG at 1/5000 dilution;

Exposure time: 5 seconds