

AVEN RABBIT PAB

货号: S219665

产品全名: AVEN 兔多抗

基因符号: PDCD12

UNIPROT ID: Q9NQS1 (Gene Accession - NP_065104)

背景: AVEN, a cell death regulator, is an important signal inducer in acute leukemia. AVEN is a highly conserved peripheral membrane protein that protects the cell against the proteolytic activation of caspases as well as Apaf-1 mediated apoptosis by interfering with Apaf-1's ability to self-associate. Bcl-2 and Bad also interact with AVEN to prevent apoptosis. AVEN is highly expressed in ovary, heart, thymus, spleen, testis and colon, but can also be detected in other tissues. Erythropoietin and methylprednisolone may play important roles in the expression of AVEN in cardiac tissue, especially after a traumatic brain injury. In young patients suffering from acute lymphoblastic leukemia (ALL), AVEN expression may be a useful tool in prognosis prediction.

抗原: Synthetic peptide of human AVEN

经过测试的应用: ELISA, WB, IHC

推荐稀释比: IHC: 25-100;WB: 500-2000;ELISA: 2000-5000

种属反应性: Rabbit

克隆性: Rabbit Polyclonal

亚型: Immunogen-specific rabbit IgG

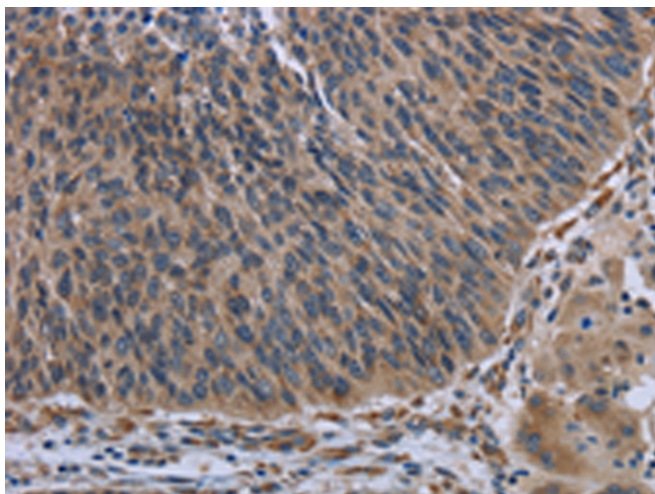
纯化: Antigen affinity purification

种属反应性: Human, Mouse

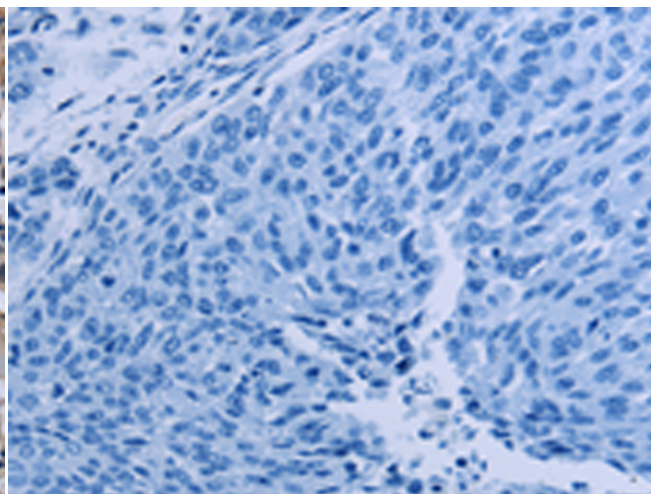
成分: PBS (without Mg²⁺ and Ca²⁺), pH 7.4, 150 mM NaCl, 0.05% Sodium Azide and 40% glycerol

研究领域: Cancer

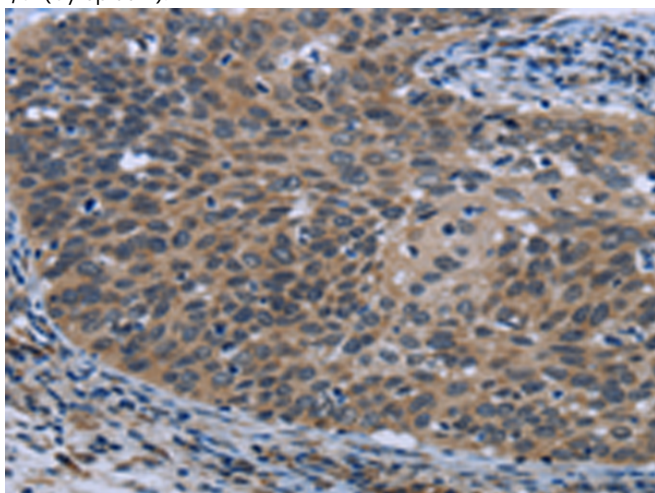
储存和运输: Store at -20°C. Avoid repeated freezing and thawing



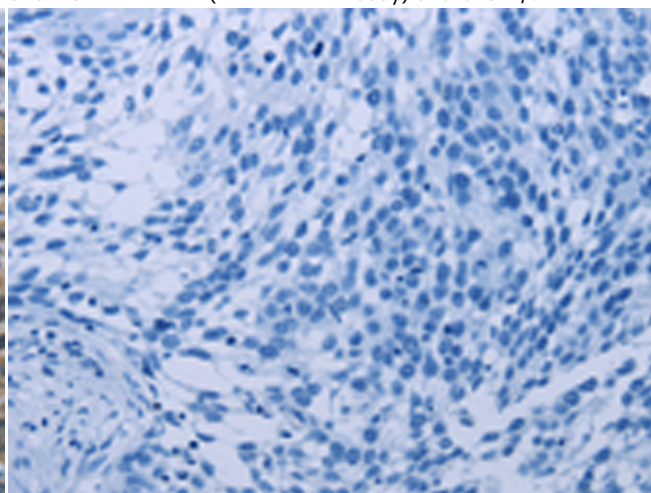
Immunohistochemistry analysis of paraffin embedded Human lung cancer tissue using 219665(AVEN Antibody) at a dilution of 1/30(Cytoplasm).



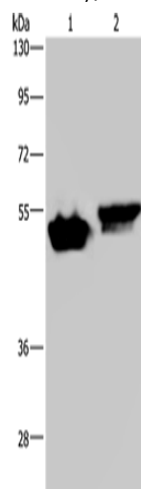
In comparison with the IHC on the left, the same paraffin-embedded Human lung cancer tissue is first treated with the synthetic peptide and then with 219665(Anti-AVEN Antibody) at dilution 1/30.



The image on the left is immunohistochemistry of paraffin-embedded Human cervical cancer tissue using 219665(Anti-AVEN Antibody) at a dilution of 1/30.



In comparison with the IHC on the left, the same paraffin-embedded Human cervical cancer tissue is first treated with synthetic peptide and then with D260111(Anti-AVEN Antibody) at dilution 1/30.



Gel: 8%SDS-PAGE, Lysate: 40 µg;
Lane 1-2: Raji cells, Hela cells;
Primary antibody: 219665(AVEN Antibody) at dilution 1/200;
Secondary antibody: Goat anti rabbit IgG at 1/8000 dilution;
Exposure time: 2 minutes



Product Description

Pioneering GTPase and Oncogene Product Development since 2010
