

ATRN RABBIT PAB

货号: S220393

产品全名: ATRN 兔多抗

基因符号 MGCA; DPPT-L

UNIPROT ID: O75882 (Gene Accession - NP_001193976)

背景: Multiple transcript variants encoding different isoforms exist for this gene. One of the isoforms is a membrane-bound protein with sequence similarity to the mouse mahogany protein, a receptor involved in controlling obesity. The other two isoforms are secreted proteins involved in the initial immune cell clustering during inflammatory responses that may regulate the chemotactic activity of chemokines.

抗原: Synthetic peptide of human ATRN

经过测试的应用: ELISA, IHC

推荐稀释比: IHC: 50-200; ELISA: 2000-5000

种属反应性: Rabbit

克隆性: Rabbit Polyclonal

亚型: Immunogen-specific rabbit IgG

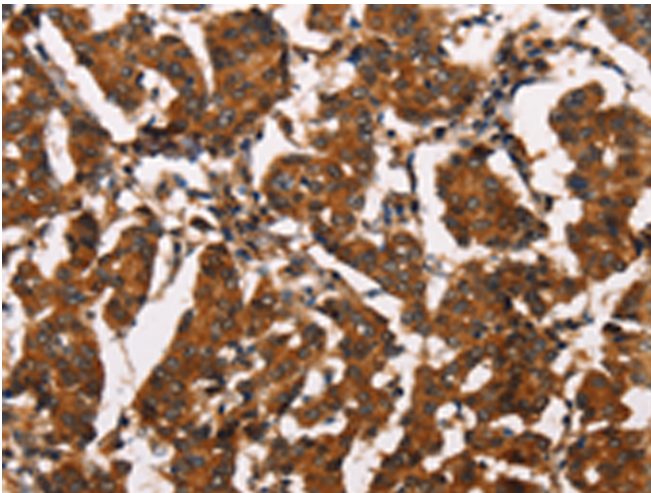
纯化: Antigen affinity purification

种属反应性: Human, Mouse, Rat

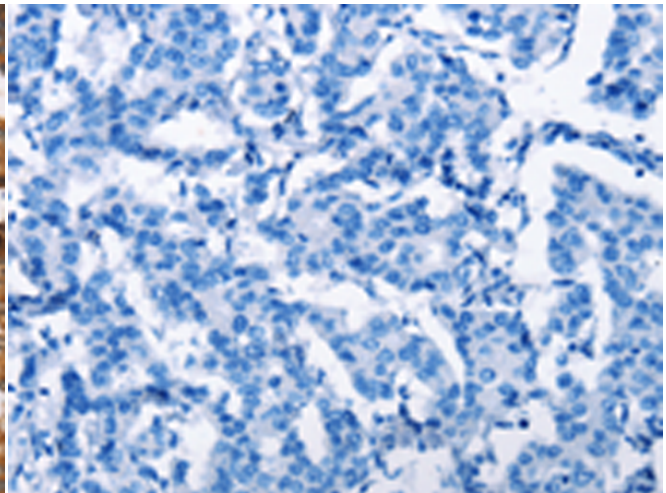
成分: PBS (without Mg²⁺ and Ca²⁺), pH 7.4, 150 mM NaCl, 0.05% Sodium Azide and 40% glycerol

研究领域: Metabolism, Neuroscience

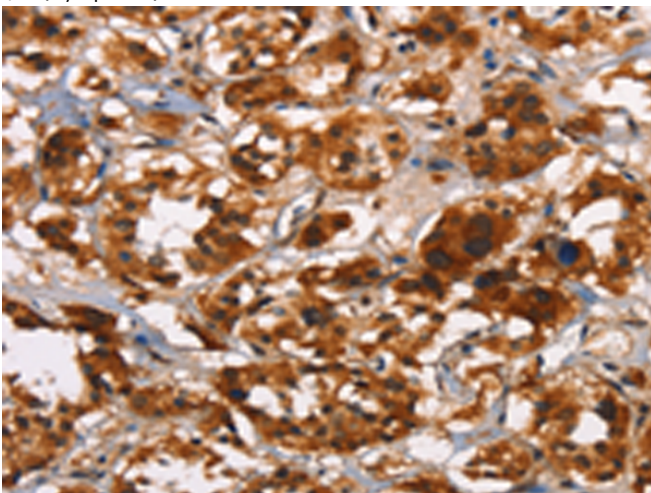
储存和运输: Store at -20°C. Avoid repeated freezing and thawing



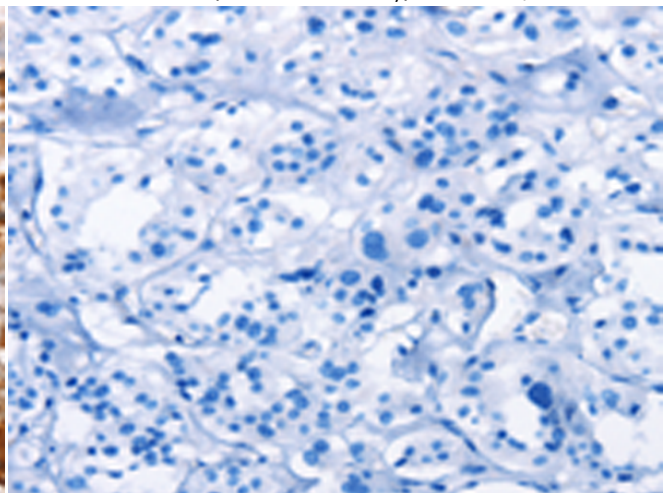
Immunohistochemistry analysis of paraffin embedded Human breast cancer tissue using 220393(ATRN Antibody) at a dilution of 1/50(Cytoplasm).



In comparison with the IHC on the left, the same paraffin-embedded Human breast cancer tissue is first treated with the synthetic peptide and then with 220393(Anti-ATRN Antibody) at dilution 1/50.



The image on the left is immunohistochemistry of paraffin-embedded Human thyroid cancer tissue using 220393(Anti-ATRN Antibody) at a dilution of 1/50.



In comparison with the IHC on the left, the same paraffin-embedded Human thyroid cancer tissue is first treated with synthetic peptide and then with D261472(Anti-ATRN Antibody) at dilution 1/50.



Product Description

Pioneering GTPase and Oncogene Product Development since 2010
