

ATR RABBIT PAB

货号: S220392

产品全名: ATR 兔多抗

基因符号 FRP1; MEC1; SCKL; FCTCS; SCKL1

UNIPROT ID: Q13535 (Gene Accession - NP_001175)

背景: The protein encoded by this gene is a serine/threonine kinase and DNA damage sensor, activating cell cycle checkpoint signaling upon DNA stress. The encoded protein can phosphorylate and activate several proteins involved in the inhibition of DNA replication and mitosis, and can promote DNA repair, recombination, and apoptosis. This protein is also important for fragile site stability and centrosome duplication. Defects in this gene are a cause of Seckel syndrome 1.

抗原: Synthetic peptide of human ATR

经过测试的应用: ELISA, WB, IHC

推荐稀释比: IHC: 50-200;WB: 1000-5000;ELISA: 5000-10000

种属反应性: Rabbit

克隆性: Rabbit Polyclonal

亚型: Immunogen-specific rabbit IgG

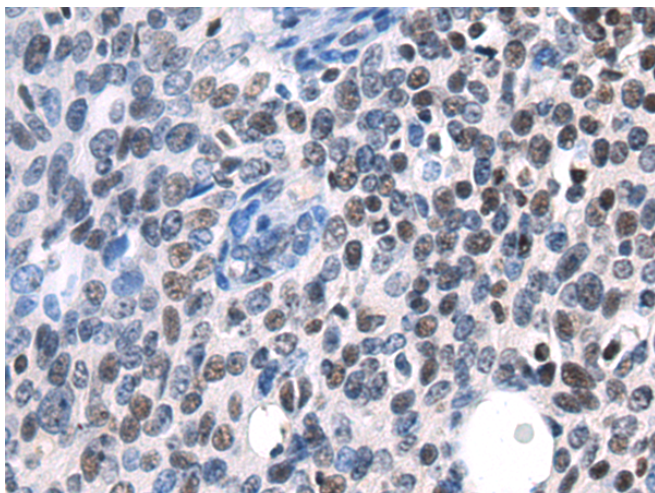
纯化: Antigen affinity purification

种属反应性: Human

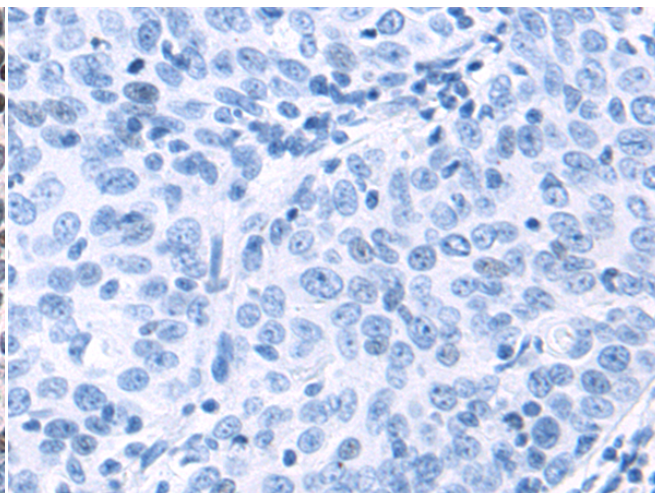
成分: PBS (without Mg²⁺ and Ca²⁺), pH 7.4, 150 mM NaCl, 0.05% Sodium Azide and 40% glycerol

研究领域: Epigenetics and Nuclear Signaling, Cancer

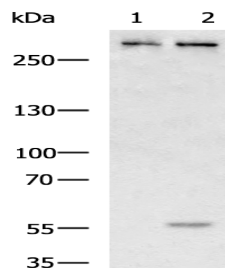
储存和运输: Store at -20°C. Avoid repeated freezing and thawing



Immunohistochemistry analysis of paraffin embedded Human cervical cancer tissue using 220392(ATR Antibody) at a dilution of 1/70(Nucleus).



In comparison with the IHC on the left, the same paraffin-embedded Human cervical cancer tissue is first treated with the synthetic peptide and then with 220392(Anti-ATR Antibody) at dilution 1/70.



Gel: 6%SDS-PAGE, Lysate: 40 µg;

Lane 1-2: LOVO, A549 cell lysates;

Primary antibody: 220392(ATR Antibody) at dilution 1/1350;

Secondary antibody: HRP-conjugated Goat anti rabbit IgG at 1/5000 dilution;

Exposure time: 30 seconds