

ATPB RABBIT MAB

货号: N261897

产品全名: ATPB 兔单克隆抗体

基因符号 ATP5B; ATPMB; ATPSB; HEL-S-271

UNIPROT ID: P06576

背景: Rotation of the central stalk against the surrounding alpha(3)beta(3) subunits leads to hydrolysis of ATP in three separate catalytic sites on the beta subunits.

抗原: A synthetic peptide of human ATPB

经过测试的应用: WB,IHC-F,IHC-P,ICC/IF,IP

推荐稀释比: WB: 1/500-1/1000 IHC: 1/50-1/100 IF: 1/50-1/200 IP: 1/20

种属反应性: Rabbit

克隆性: Rabbit Monoclonal

克隆编号: R01-4G1

分子量: Calculated MW: 57 kDa; Observed MW: 52 kDa

亚型: IgG

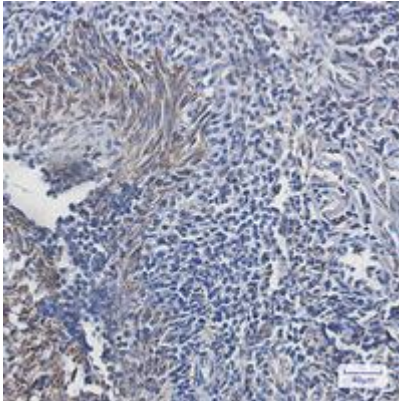
纯化: Affinity Purified

种属反应性: Human, Mouse and Rat,Monkey

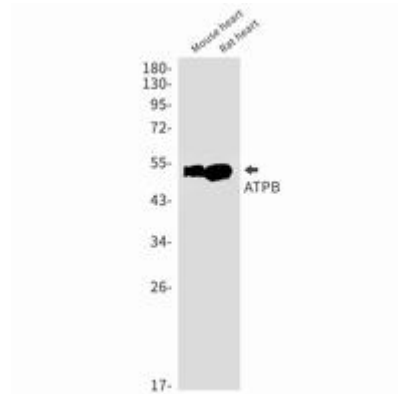
成分: PBS (without Mg²⁺ and Ca²⁺), pH 7.3 containing 50% glycerol, 0.5% BSA and 0.02% sodium azide

研究领域: Tags & Cell Markers

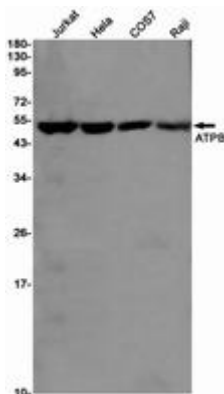
储存和运输: Store at -20°C. Avoid repeated freezing and thawing



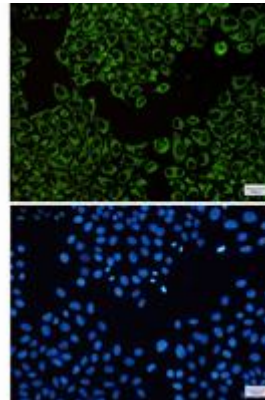
Immunohistochemistry analysis of paraffin-embedded Human tonsil using ATPB antibody. High-pressure and temperature Sodium Citrate pH 6.0 was used for antigen retrieval.



Western blot analysis of ATPB in mouse heart, rat heart lysates using ATPB antibody.



Western blot analysis of ATPB in Jurkat, HeLa, COS7, Raji lysates using ATPB antibody.



Immunocytochemistry analysis of ATPB (green) in HeLa using ATPB antibody, and DAPI (blue).