

ATP6V1E1 RABBIT PAB

货号: N225999

产品全名: ATP6V1E1 兔多抗

基因符号 V-ATPase subunit E 1; p31

UNIPROT ID: P36543

背景: Subunit of the V1 complex of vacuolar(H⁺)-ATPase (V-ATPase), a multisubunit enzyme composed of a peripheral complex (V1) that hydrolyzes ATP and a membrane integral complex (V0) that translocates protons.

抗原: Recombinant protein of human ATP6V1E1

经过测试的应用: WB,IHC-F,IHC-P,ICC/IF,FC,IP

推荐稀释比: WB: 1/500-1/1000 IHC: 1/50-1/100 IF: 1/50-1/200 IP: 1/20 FC: 1/50-1/100

种属反应性: Rabbit

克隆性: Rabbit Polyclonal

分子量: Calculated MW: 26 kDa; Observed MW: 26 kDa

亚型: IgG

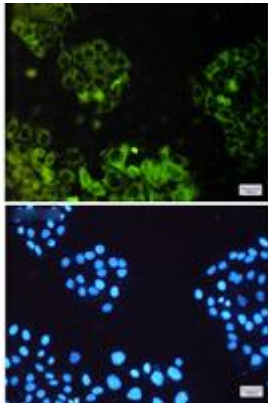
纯化: Affinity Purified

种属反应性: Human,Mouse

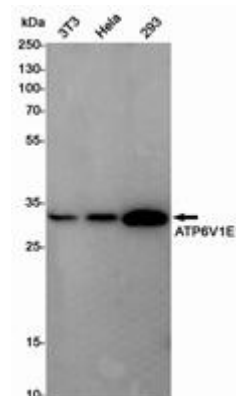
成分: PBS (without Mg²⁺ and Ca²⁺), pH 7.3 containing 50% glycerol, 0.5% BSA and 0.02% sodium azide

研究领域: Signal Transduction

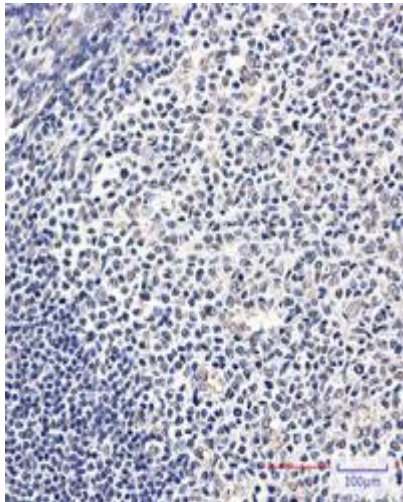
储存和运输: Store at -20°C. Avoid repeated freezing and thawing



Immunocytochemistry analysis of ATP6V1E1 (green) in HeLa using ATP6V1E1 antibody, and DAPI (blue)



Western blot analysis of ATP6V1E1 in 3T3, HeLa, 293 lysates using ATP6V1E1 antibody.



Immunohistochemistry analysis of paraffin-embedded Human tonsil using ATP6V1E1 antibody. High-pressure and temperature Sodium Citrate pH 6.0 was used for antigen retrieval.