

ATP5MG RABBIT PAB

货号: S218793

产品全名: ATP5MG 兔多抗

基因符号: ATP5L; ATP5JG

UNIPROT ID: O75964 (Gene Accession - BC015128)

背景: Mitochondrial ATP synthase catalyzes ATP synthesis, utilizing an electrochemical gradient of protons across the inner membrane during oxidative phosphorylation. It is composed of two linked multi-subunit complexes: the soluble catalytic core, F₁, and the membrane-spanning component, F_o, which comprises the proton channel. The F₁ complex consists of 5 different subunits (alpha, beta, gamma, delta, and epsilon) assembled in a ratio of 3 alpha, 3 beta, and a single representative of the other 3. The F_o seems to have nine subunits (a, b, c, d, e, f, g, F₆ and 8). This gene encodes the g subunit of the F_o complex. Alternative splicing results in multiple transcript variants.

抗原: Fusion protein of human ATP5MG

经过测试的应用: ELISA, WB, IHC

推荐稀释比: IHC: 50-200;WB: 500-2000;ELISA: 5000-10000

种属反应性: Rabbit

克隆性: Rabbit Polyclonal

亚型: Immunogen-specific rabbit IgG

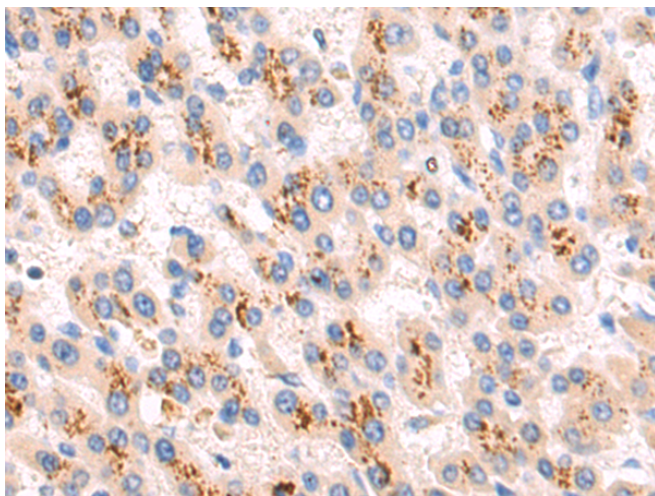
纯化: Antigen affinity purification

种属反应性: Human, Mouse

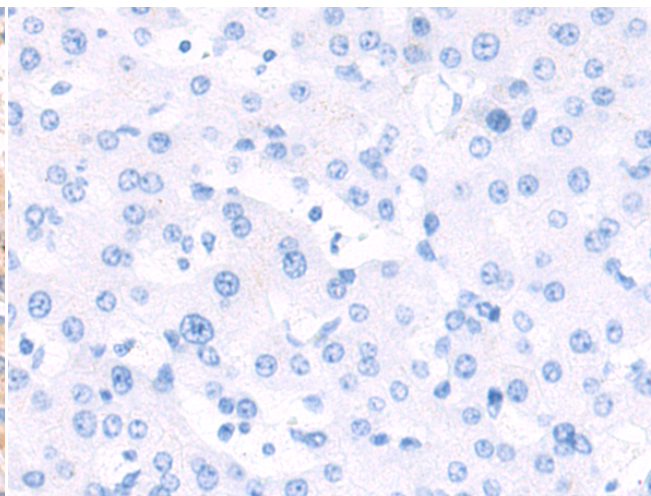
成分: PBS (without Mg²⁺ and Ca²⁺), pH 7.4, 150 mM NaCl, 0.05% Sodium Azide and 40% glycerol

研究领域: Metabolism, Signal Transduction

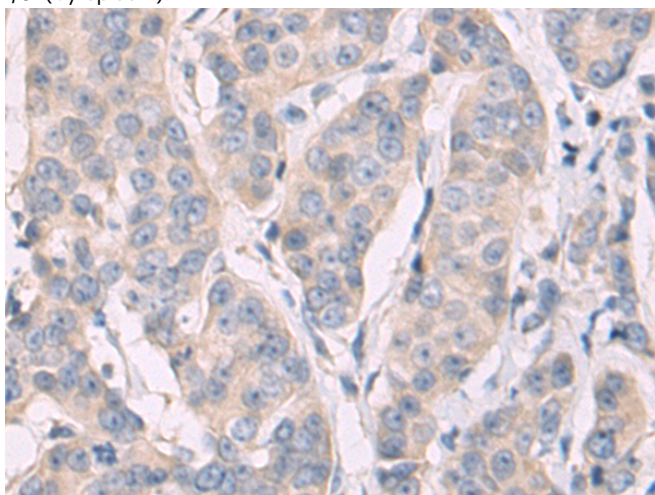
储存和运输: Store at -20°C. Avoid repeated freezing and thawing



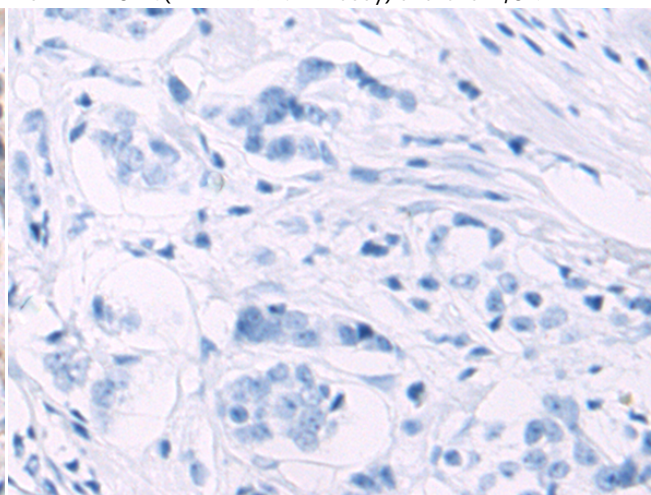
Immunohistochemistry analysis of paraffin embedded Human liver cancer tissue using 218793(ATP5MG Antibody) at a dilution of 1/80(Cytoplasm).



In comparison with the IHC on the left, the same paraffin-embedded Human liver cancer tissue is first treated with the fusion protein and then with 218793(Anti-ATP5MG Antibody) at dilution 1/80.

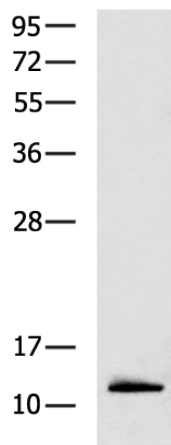


The image on the left is immunohistochemistry of paraffin-embedded Human breast cancer tissue using 218793(Anti-ATP5MG Antibody) at a dilution of 1/80.



In comparison with the IHC on the left, the same paraffin-embedded Human breast cancer tissue is first treated with fusion protein and then with D225205(Anti-ATP5MG Antibody) at dilution 1/80.

kDa



Gel: 12%SDS-PAGE, Lysate: 40 μ g;
 Lane: HepG2 cell lysate;
 Primary antibody: 218793(ATP5MG Antibody) at dilution 1/1200;
 Secondary antibody: HRP-conjugated Goat anti rabbit IgG at 1/5000 dilution;
 Exposure time: 10 seconds



Product Description

Pioneering GTPase and Oncogene Product Development since 2010
