

## ATP5IF1 RABBIT PAB

货号: S216880

产品全名: ATP5IF1 兔多抗

基因符号 IP; ATP1; ATP1P; ATP1F1

**UNIPROT ID:** Q9UII2 (Gene Accession - BC009677)

**背景:** This gene encodes a mitochondrial ATPase inhibitor. Alternative splicing occurs at this locus and three transcript variants encoding distinct isoforms have been identified.

**抗原:** Fusion protein of human ATP5IF1

**经过测试的应用:** ELISA, WB, IHC

**推荐稀释比:** IHC: 50-200;WB: 500-2000;ELISA: 5000-10000

**种属反应性:** Rabbit

**克隆性:** Rabbit Polyclonal

**亚型:** Immunogen-specific rabbit IgG

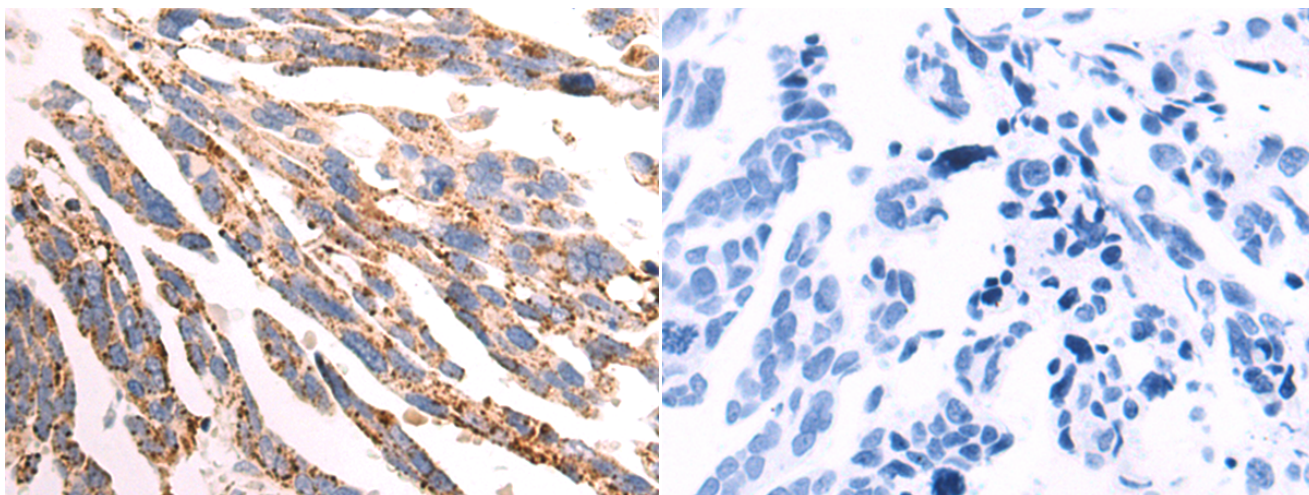
**纯化:** Antigen affinity purification

**种属反应性:** Human

**成分:** PBS (without Mg<sup>2+</sup> and Ca<sup>2+</sup>), pH 7.4, 150 mM NaCl, 0.05% Sodium Azide and 40% glycerol

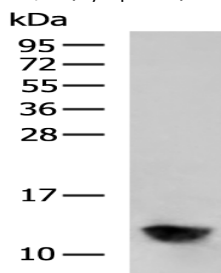
**研究领域:** Metabolism

**储存和运输:** Store at -20°C. Avoid repeated freezing and thawing



Immunohistochemistry analysis of paraffin embedded Human colorectal cancer tissue using 216880(ATP5IF1 Antibody) at a dilution of 1/85(Cytoplasm).

In comparison with the IHC on the left, the same paraffin-embedded Human colorectal cancer tissue is first treated with the fusion protein and then with 216880(Anti-ATP5IF1 Antibody) at dilution 1/85.



Gel: 12%SDS-PAGE, Lysate: 40 µg;

Lane: K562 cell lysate;

Primary antibody: 216880(ATP5IF1 Antibody) at dilution 1/550;

Secondary antibody: HRP-conjugated Goat anti rabbit IgG at 1/5000 dilution;

Exposure time: 90 seconds