

ATP CITRATE LYASE RABBIT MAB

货号: N261891

产品全名: ATP Citrate lyase 兔单克隆抗体

基因符号 ACLY; ATP-citrate synthase; ATP-citrate; pro-S-)-lyase; ACL; Citrate cleavage enzyme

UNIPROT ID: P53396

背景: ATP citrate lyase is the primary enzyme responsible for the synthesis of cytosolic acetyl-CoA in many tissues. The enzyme is a tetramer (relative molecular weight approximately 440,000) of apparently identical subunits. It catalyzes the formation of acetyl-CoA and oxaloacetate from citrate and CoA with a concomitant hydrolysis of ATP to ADP and phosphate. The product, acetyl-CoA, serves several important biosynthetic pathways, including lipogenesis and cholesterologenesis.

抗原: A synthetic peptide of human ATP citrate lyase

经过测试的应用: WB, ICC/IF, IP

推荐稀释比: WB: 1/500-1/1000 IF: 1/50-1/200 IP: 1/20

种属反应性: Rabbit

克隆性: Rabbit Monoclonal

克隆编号: R02-9B5

分子量: Calculated MW: 121 kDa; Observed MW: 121 kDa

亚型: IgG

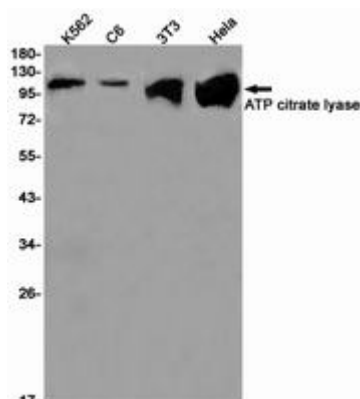
纯化: Affinity Purified

种属反应性: Human, Mouse and Rat

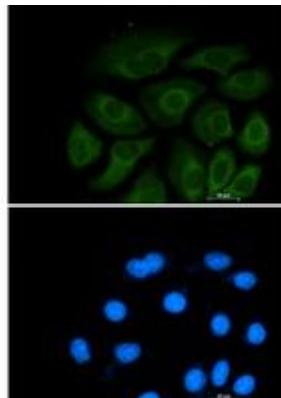
成分: PBS (without Mg²⁺ and Ca²⁺), pH 7.3 containing 50% glycerol, 0.5% BSA and 0.02% sodium azide

研究领域: Signal Transduction

储存和运输: Store at -20°C. Avoid repeated freezing and thawing



Western blot analysis of ATP citrate lyase in K562, C6, 3T3, Hela lysates using ATP citrate lyase antibody.



Immunocytochemistry analysis of ATP Citrate lyase (green) in A549 using ATP Citrate lyase antibody, and DAPI (blue).