

## ATN1 RABBIT PAB

货号: S221597

产品全名: ATN1 兔多抗

基因符号 B37; HRS; NOD; DRPLA; D12S755E

**UNIPROT ID:** P54259 (Gene Accession - NP\_001931)

**背景:** Dentatorubral pallidoluysian atrophy (DRPLA) is a rare neurodegenerative disorder characterized by cerebellar ataxia, myoclonic epilepsy, choreoathetosis, and dementia. The disorder is related to the expansion from 7-23 copies to 49-75 copies of a trinucleotide repeat (CAG/CAA) within this gene. The encoded protein includes a serine repeat and a region of alternating acidic and basic amino acids, as well as the variable glutamine repeat. Alternative splicing results in two transcripts variants that encode the same protein.

**抗原:** Synthetic peptide of human ATN1

**经过测试的应用:** ELISA, IHC

**推荐稀释比:** IHC: 25-100; ELISA: 5000-10000

**种属反应性:** Rabbit

**克隆性:** Rabbit Polyclonal

**亚型:** Immunogen-specific rabbit IgG

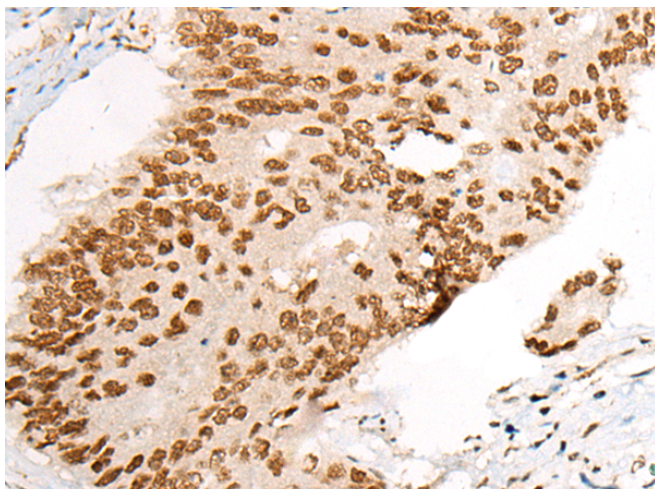
**纯化:** Antigen affinity purification

**种属反应性:** Human, Mouse, Rat

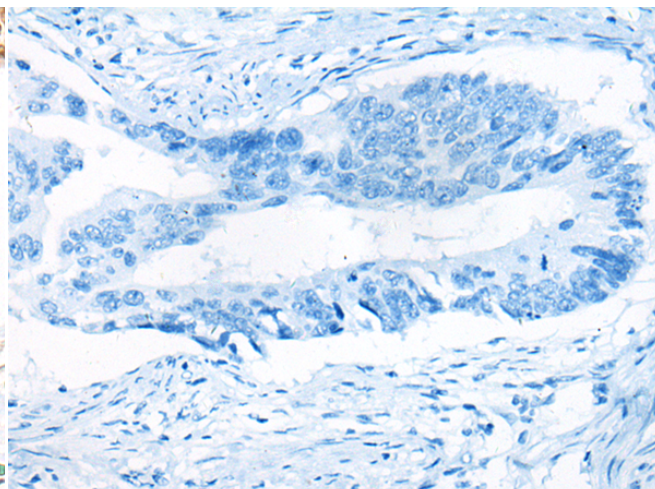
**成分:** PBS (without Mg<sup>2+</sup> and Ca<sup>2+</sup>), pH 7.4, 150 mM NaCl, 0.05% Sodium Azide and 40% glycerol

**研究领域:** Epigenetics and Nuclear Signaling

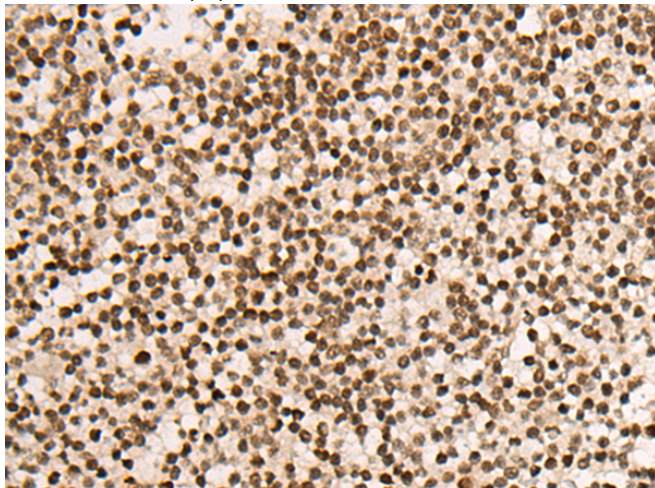
**储存和运输:** Store at -20°C. Avoid repeated freezing and thawing



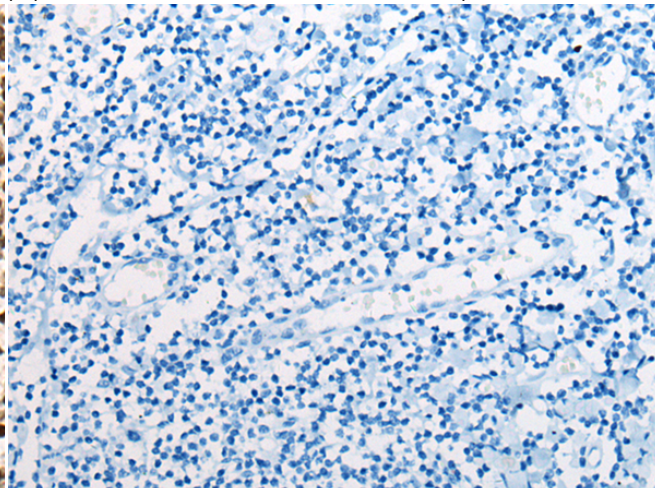
Immunohistochemistry analysis of paraffin embedded Human colorectal cancer tissue using 221597(ATN1 Antibody) at a dilution of 1/25(Nucleus and Cytoplasm).



In comparison with the IHC on the left, the same paraffin-embedded Human colorectal cancer tissue is first treated with the synthetic peptide and then with 221597(Anti-ATN1 Antibody) at dilution 1/25.



The image on the left is immunohistochemistry of paraffin-embedded Human tonsil tissue using 221597(Anti-ATN1 Antibody) at a dilution of 1/25.



In comparison with the IHC on the left, the same paraffin-embedded Human tonsil tissue is first treated with synthetic peptide and then with D263251(Anti-ATN1 Antibody) at dilution 1/25.



# Product Description

Pioneering GTPase and Oncogene Product Development since 2010

---