

ATM RABBIT MAB

货号: N261632

产品全名: ATM 兔单克隆抗体

基因符号 ATM; Serine-protein kinase ATM; Ataxia telangiectasia mutated; A-T mutated

UNIPROT ID: Q13315

背景: The protein encoded by this gene belongs to the PI3/PI4-kinase family. This protein is an important cell cycle checkpoint kinase that phosphorylates; thus, it functions as a regulator of a wide variety of downstream proteins, including tumor suppressor proteins p53 and BRCA1, checkpoint kinase CHK2, checkpoint proteins RAD17 and RAD9, and DNA repair protein NBS1. This protein and the closely related kinase ATR are thought to be master controllers of cell cycle checkpoint signaling pathways that are required for cell response to DNA damage and for genome stability.

抗原: A synthetic peptide of human ATM

经过测试的应用: WB, ICC/IF

推荐稀释比: WB: 1/500-1/1000 IF: 1/50-1/200

种属反应性: Rabbit

克隆性: Rabbit Monoclonal

克隆编号: R08-8H3

分子量: Calculated MW: 351 kDa; Observed MW: 351 kDa

亚型: IgG

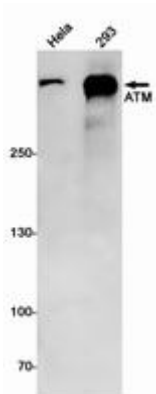
纯化: Affinity Purified

种属反应性: Human

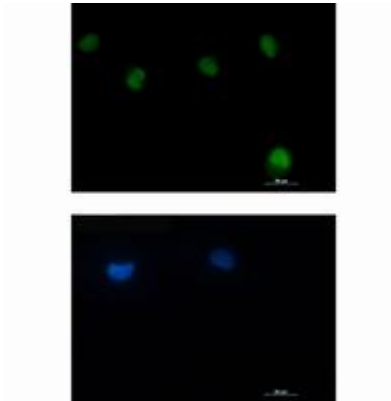
成分: PBS (without Mg²⁺ and Ca²⁺), pH 7.3 containing 50% glycerol, 0.5% BSA and 0.02% sodium azide

研究领域: Epigenetics and Nuclear Signaling

储存和运输: Store at -20°C. Avoid repeated freezing and thawing



Western blot analysis of ATM in HeLa, 293 lysates using ATM antibody.



Immunocytochemistry analysis of ATM (green) in HT-1080 using ATM antibody, and DAPI (blue).