

## ATG13 RABBIT PAB

货号: S218735

产品全名: ATG13 兔多抗

基因符号: KIAA0652; PARATARG8

**UNIPROT ID:** O75143 (Gene Accession - BC001331)

**背景:** The protein encoded by this gene is an autophagy factor and a target of the TOR kinase signaling pathway. The encoded protein is essential for autophagosome formation and mitophagy.

**抗原:** Fusion protein of human ATG13

**经过测试的应用:** ELISA, WB, IHC

**推荐稀释比:** IHC: 50-200;WB: 500-2000;ELISA: 2000-5000

**种属反应性:** Rabbit

**克隆性:** Rabbit Polyclonal

**亚型:** Immunogen-specific rabbit IgG

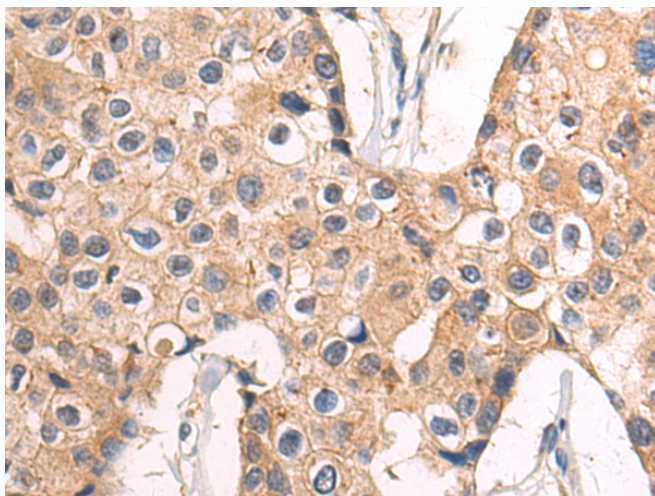
**纯化:** Antigen affinity purification

**种属反应性:** Human, Mouse

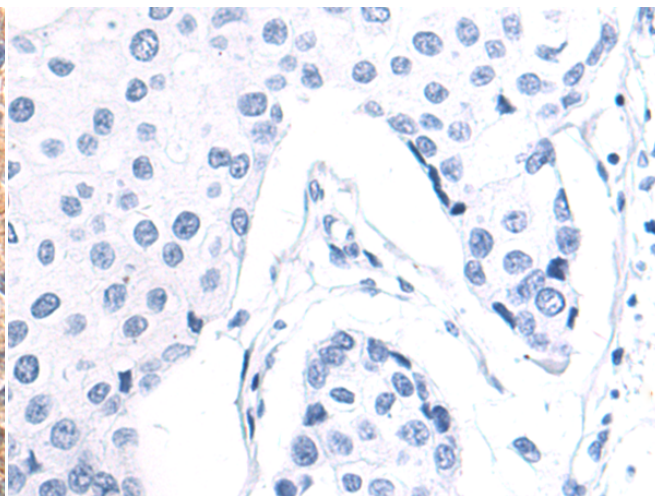
**成分:** PBS (without Mg<sup>2+</sup> and Ca<sup>2+</sup>), pH 7.4, 150 mM NaCl, 0.05% Sodium Azide and 40% glycerol

**研究领域:** Cancer

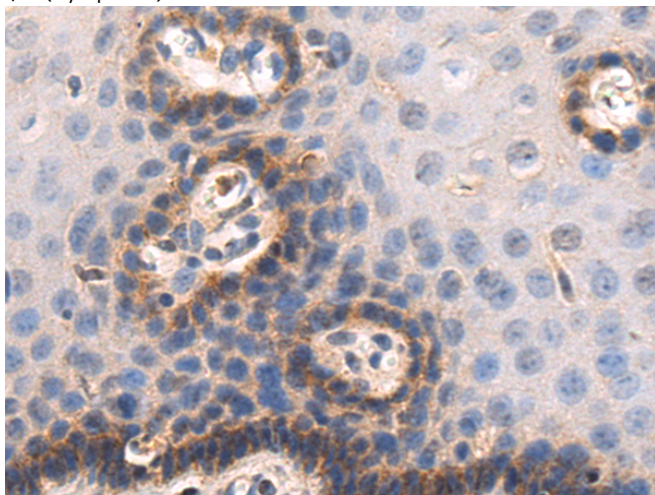
**储存和运输:** Store at -20°C. Avoid repeated freezing and thawing



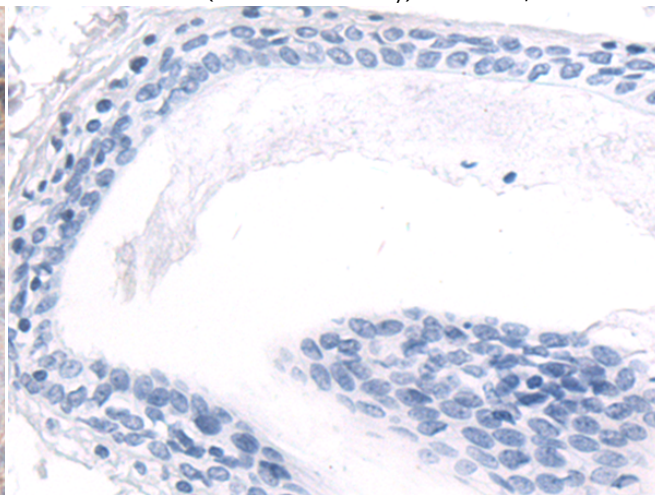
Immunohistochemistry analysis of paraffin embedded Human breast cancer tissue using 218735(ATG13 Antibody) at a dilution of 1/50(Cytoplasm).



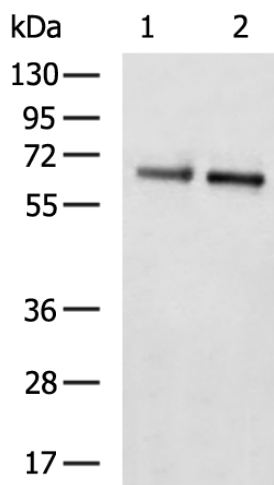
In comparison with the IHC on the left, the same paraffin-embedded Human breast cancer tissue is first treated with the fusion protein and then with 218735(Anti-ATG13 Antibody) at dilution 1/50.



The image on the left is immunohistochemistry of paraffin-embedded Human esophagus cancer tissue using 218735(Anti-ATG13 Antibody) at a dilution of 1/50.



In comparison with the IHC on the left, the same paraffin-embedded Human esophagus cancer tissue is first treated with fusion protein and then with D225082(Anti-ATG13 Antibody) at dilution 1/50.



Gel: 8%SDS-PAGE, Lysate: 40 µg;  
 Lane 1-2: NIH/3T3 cell, BGC-823 cell lysates;  
 Primary antibody: 218735(ATG13 Antibody) at dilution 1/600;  
 Secondary antibody: HRP-conjugated Goat anti rabbit IgG at 1/5000 dilution;  
 Exposure time: 15 seconds



# Product Description

Pioneering GTPase and Oncogene Product Development since 2010

---