

## ATG10 RABBIT MAB

货号: N263228

产品全名: ATG10 兔单克隆抗体

基因符号 autophagy related 10; APG10; APG10L; pp12616

**UNIPROT ID:** Q9H0Y0

**背景:** E2-like enzyme involved in autophagy. Acts as an E2-like enzyme that catalyzes the conjugation of ATG12 to ATG5. ATG12 conjugation to ATG5 is required for autophagy. Likely serves as an ATG5-recognition molecule. Not involved in ATG12 conjugation to ATG3 (By similarity). Plays a role in adenovirus-mediated cell lysis.

**抗原:** A synthetic peptide of human ATG10

**经过测试的应用:** WB,IP

**推荐稀释比:** WB: 1/500-1/1000 IP: 1/20

**种属反应性:** Rabbit

**克隆性:** Rabbit Monoclonal

**克隆编号:** R02-0B2

**分子量:** Calculated MW: 25 kDa; Observed MW: 25 kDa

**亚型:** IgG

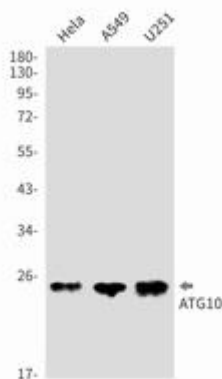
**纯化:** Affinity Purified

**种属反应性:** Human

**成分:** PBS (without Mg<sup>2+</sup> and Ca<sup>2+</sup>), pH 7.3 containing 50% glycerol, 0.5% BSA and 0.02% sodium azide

**研究领域:** Cell Biology

**储存和运输:** Store at -20°C. Avoid repeated freezing and thawing



Western blot analysis of ATG10 in HeLa, A549, U251 lysates using ATG10 antibody.



# Product Description

Pioneering GTPase and Oncogene Product Development since 2010

---