

ASXL2 RABBIT PAB

货号: S218337

产品全名: ASXL2 兔多抗

基因符号: ASXH2

UNIPROT ID: Q76L83 (Gene Accession - BC042999)

背景: ASXL2 is a human homolog of the Drosophila *asx* gene. Drosophila *asx* is an enhancer of *trithorax* (see MIM 159555) and *polycomb* (see MIM 610231) (*ETP*) gene that encodes a chromatin protein with dual functions in transcriptional activation and silencing (Kato and Kato, 2003 [PubMed 12888926]).

抗原: Fusion protein of human ASXL2

经过测试的应用: ELISA, IHC

推荐稀释比: IHC: 25-100; ELISA: 5000-10000

种属反应性: Rabbit

克隆性: Rabbit Polyclonal

亚型: Immunogen-specific rabbit IgG

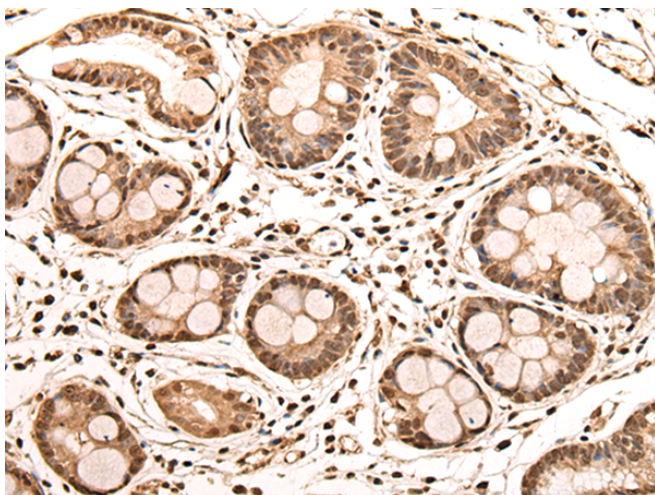
纯化: Antigen affinity purification

种属反应性: Human, Mouse

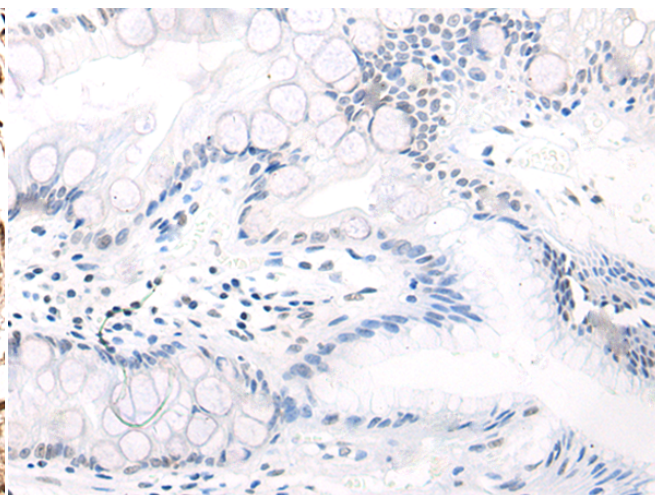
成分: PBS (without Mg²⁺ and Ca²⁺), pH 7.4, 150 mM NaCl, 0.05% Sodium Azide and 40% glycerol

研究领域: Epigenetics and Nuclear Signaling

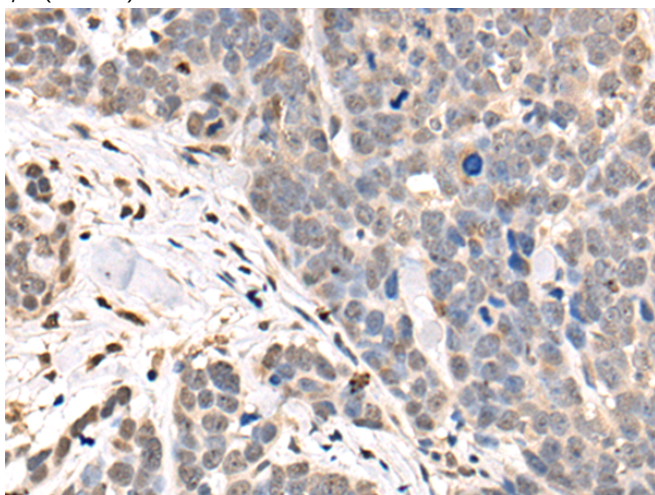
储存和运输: Store at -20°C. Avoid repeated freezing and thawing



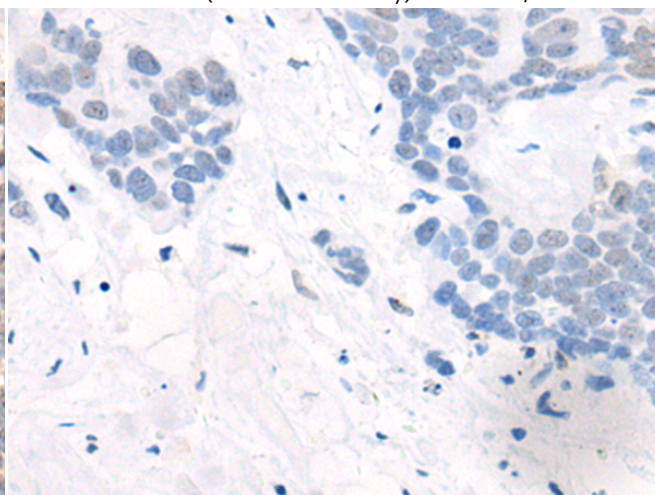
Immunohistochemistry analysis of paraffin embedded Human gastric cancer tissue using 218337 (ASXL2 Antibody) at a dilution of 1/30 (Nucleus).



In comparison with the IHC on the left, the same paraffin-embedded Human gastric cancer tissue is first treated with the fusion protein and then with 218337 (Anti-ASXL2 Antibody) at dilution 1/30.



The image on the left is immunohistochemistry of paraffin-embedded Human thyroid cancer tissue using 218337 (Anti-ASXL2 Antibody) at a dilution of 1/30.



In comparison with the IHC on the left, the same paraffin-embedded Human thyroid cancer tissue is first treated with fusion protein and then with D224200 (Anti-ASXL2 Antibody) at dilution 1/30.



Product Description

Pioneering GTPase and Oncogene Product Development since 2010
