

ASTE1 RABBIT PAB

货号: S219056

产品全名: ASTE1 兔多抗

基因符号: HT001

UNIPROT ID: Q2TB18 (Gene Accession - BC030274)

背景: Possible role in EGF receptor signaling.

抗原: Fusion protein of human ASTE1

经过测试的应用: ELISA, WB, IHC

推荐稀释比: IHC: 50-300;WB: 500-2000;ELISA: 5000-10000

种属反应性: Rabbit

克隆性: Rabbit Polyclonal

亚型: Immunogen-specific rabbit IgG

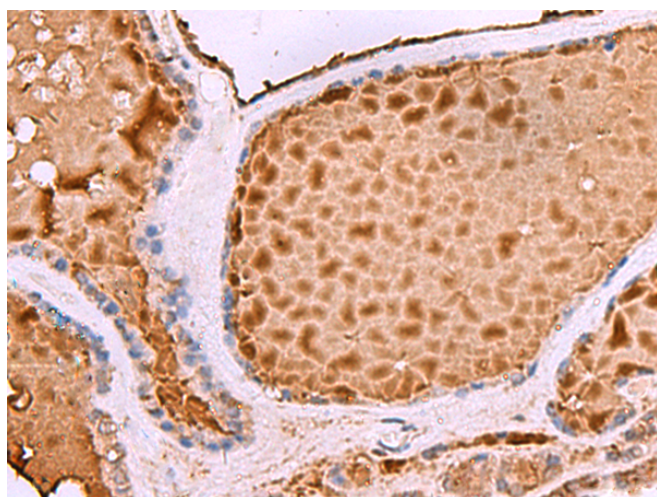
纯化: Antigen affinity purification

种属反应性: Human, Mouse

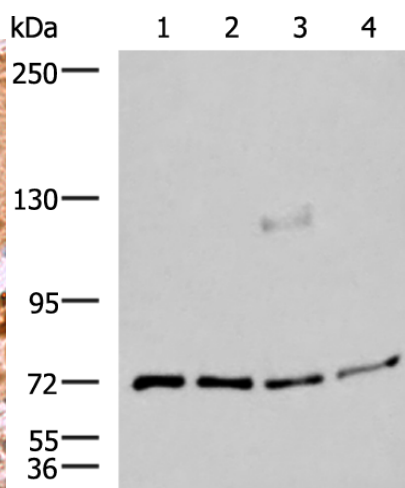
成分: PBS (without Mg²⁺ and Ca²⁺), pH 7.4, 150 mM NaCl, 0.05% Sodium Azide and 40% glycerol

研究领域: Cell Biology

储存和运输: Store at -20°C. Avoid repeated freezing and thawing



Immunohistochemistry analysis of paraffin-embedded Human thyroid cancer tissue using 219056(ASTE1 Antibody) at a dilution of 1/50(Cytoplasm).



Gel: 6%SDS-PAGE, Lysate: 40 µg;
Lane 1-4: A549, A172, TM4 and PC3 cell lysates;
Primary antibody: 219056(ASTE1 Antibody) at dilution 1/600;
Secondary antibody: HRP-conjugated Goat anti rabbit IgG at 1/5000 dilution;
Exposure time: 2 minutes