

ASS1 RABBIT MAB

货号: N261880

产品全名: ASS1 兔单克隆抗体

基因符号 Argininosuccinate synthase 1; ASS; ass1; ASSA; Citrulline aspartate ligase; CTLN1

UNIPROT ID: P00966

背景: Amino-acid biosynthesis; L-arginine biosynthesis; L-arginine from L-ornithine and carbamoyl phosphate: step 2/3. Nitrogen metabolism; urea cycle; (N(omega)-L-arginino)succinate from L-aspartate and L-citrulline: step 1/1.

抗原: A synthetic peptide of human ASS1

经过测试的应用: WB,IHC-F,IHC-P,ICC/IF,IP

推荐稀释比: WB: 1/500-1/1000 IHC: 1/50-1/100 IF: 1/50-1/200 IP: 1/20

种属反应性: Rabbit

克隆性: Rabbit Monoclonal

克隆编号: R02-7A8

分子量: Calculated MW: 47 kDa; Observed MW: 47 kDa

亚型: IgG

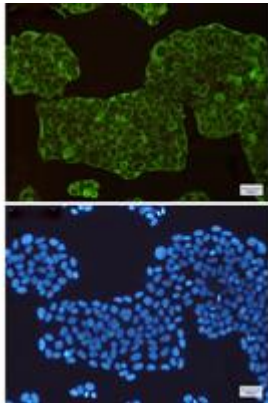
纯化: Affinity Purified

种属反应性: Human,Rat

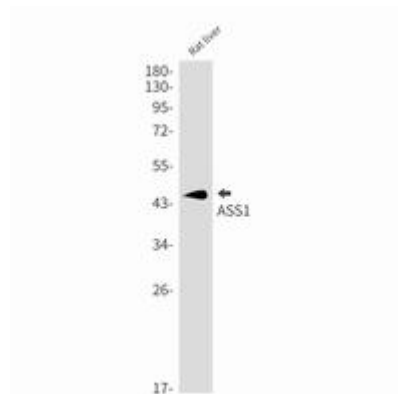
成分: PBS (without Mg²⁺ and Ca²⁺), pH 7.3 containing 50% glycerol, 0.5% BSA and 0.02% sodium azide

研究领域: Signal Transduction

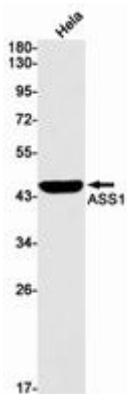
储存和运输: Store at -20°C. Avoid repeated freezing and thawing



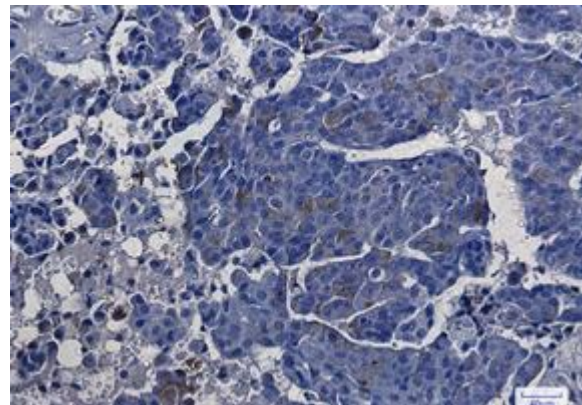
Immunocytochemistry analysis of ASS1(green) in HeLa using ASS1 antibody, and DAPI(blue)



Western blot analysis of ASS1 in rat liver lysates using ASS1 antibody.



Western blot analysis of ASS1 in HeLa lysates using ASS1 antibody.



Immunohistochemistry analysis of paraffin-embedded Human breast cancer using ASS1 antibody. High-pressure and temperature Sodium Citrate pH 6.0 was used for antigen retrieval.