

ASAH3L RABBIT PAB

货号: N225046

产品全名: ASAH3L 兔多抗

基因符号 ACER2; ASAH3L; PP11646; Alkaline ceramidase 2; AlkCDase 2; Alkaline CDase 2; haCER2; Acylsphingosine deacylase 3-like; N-acylsphingosine amidohydrolase 3-like

UNIPROT ID: Q5QJU3

背景: Golgi ceramidase that catalyzes the hydrolysis of ceramides into sphingoid bases like sphingosine and free fatty acids at alkaline pH.

抗原: Synthesized peptide derived from ASAH3L . at AA range: 50-130

经过测试的应用: WB,IHC-P,ELISA

推荐稀释比: WB: 1/500-1/1000 IHC: 1/50-1/100 ELISA: 1/10000

种属反应性: Rabbit

克隆性: Rabbit Polyclonal

分子量: Calculated MW: 31 kDa; Observed MW: 31 kDa

亚型: IgG

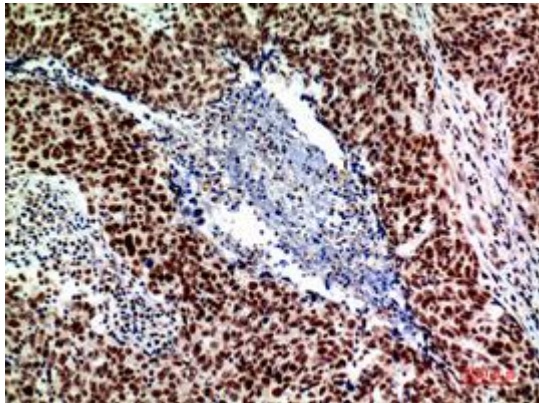
纯化: Affinity Purified

种属反应性: Human,Mouse

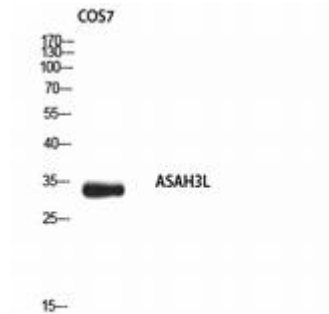
成分: PBS (without Mg²⁺ and Ca²⁺), pH 7.3 containing 50% glycerol, 0.5% BSA and 0.02% sodium azide

研究领域: Signal Transduction

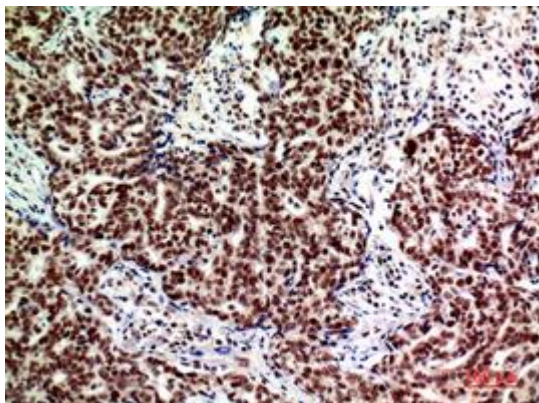
储存和运输: Store at -20°C. Avoid repeated freezing and thawing



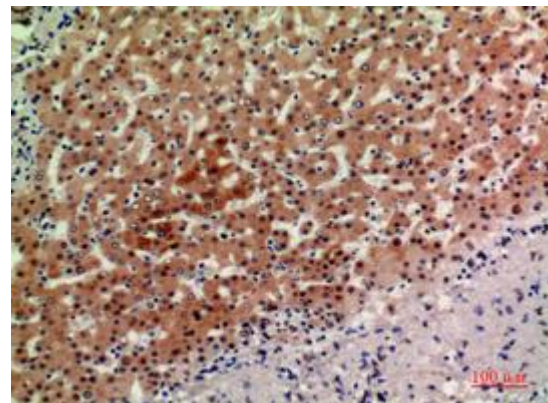
Immunohistochemistry analysis of paraffin-embedded Human breastcancer using ASA3L antibody. High-pressure and temperature Sodium Citrate pH 6.0 was used for antigen retrieval.



Western blot analysis of ASA3L in COS7 lysates using ASA3L antibody.



Immunohistochemistry analysis of paraffin-embedded Human breastcancer using ASA3L antibody. High-pressure and temperature Sodium Citrate pH 6.0 was used for antigen retrieval.



Immunohistochemistry analysis of paraffin-embedded Human liver using ASA3L antibody. High-pressure and temperature Sodium Citrate pH 6.0 was used for antigen retrieval.