

## ARL8A RABBIT PAB

货号: S217045

产品全名: ARL8A 兔多抗

基因符号: GIE2; ARL10B

**UNIPROT ID:** Q96BM9 (Gene Accession - BC015408)

**背景:** Enables GTP binding activity. Predicted to be involved in chromosome segregation. Located in cytoplasm; midbody; and spindle midzone. [provided by Alliance of Genome Resources, Apr 2022]

**抗原:** Fusion protein of human ARL8A

**经过测试的应用:** ELISA, IHC

**推荐稀释比:** IHC: 50-200; ELISA: 5000-10000

**种属反应性:** Rabbit

**克隆性:** Rabbit Polyclonal

**亚型:** Immunogen-specific rabbit IgG

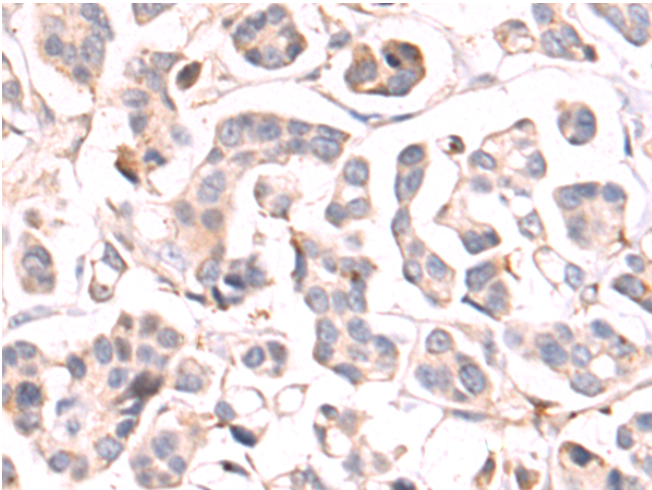
**纯化:** Antigen affinity purification

**种属反应性:** Human, Mouse

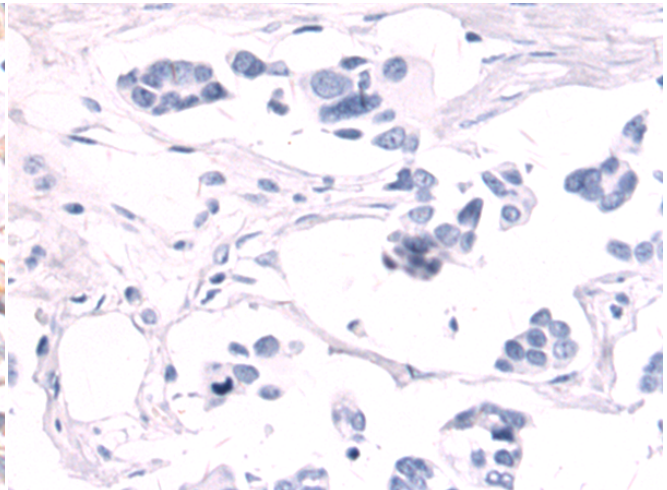
**成分:** PBS (without Mg<sup>2+</sup> and Ca<sup>2+</sup>), pH 7.4, 150 mM NaCl, 0.05% Sodium Azide and 40% glycerol

**研究领域:** Signal Transduction

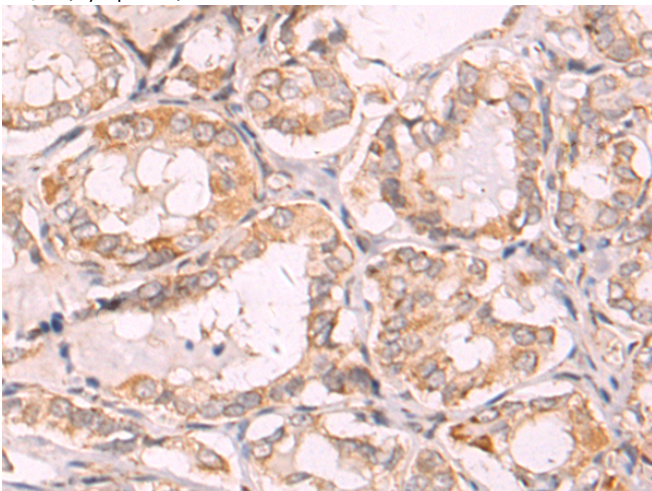
**储存和运输:** Store at -20°C. Avoid repeated freezing and thawing



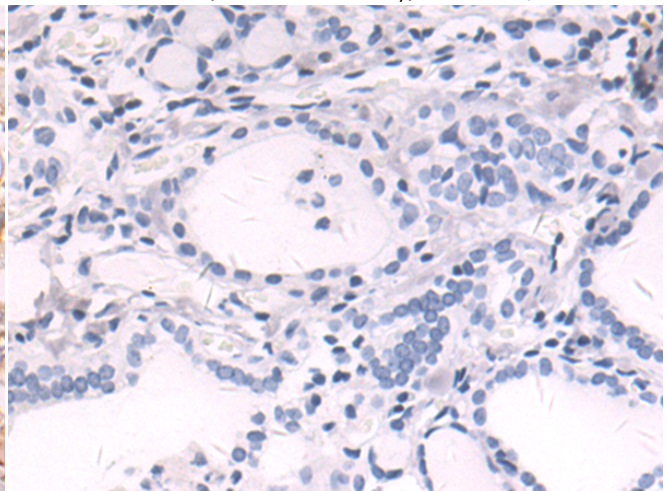
Immunohistochemistry analysis of paraffin embedded Human colorectal cancer tissue using 217045(ARL8A Antibody) at a dilution of 1/80(Cytoplasm).



In comparison with the IHC on the left, the same paraffin-embedded Human colorectal cancer tissue is first treated with the fusion protein and then with 217045(Anti-ARL8A Antibody) at dilution 1/80.



The image on the left is immunohistochemistry of paraffin-embedded Human thyroid cancer tissue using 217045(Anti-ARL8A Antibody) at a dilution of 1/80.



In comparison with the IHC on the left, the same paraffin-embedded Human thyroid cancer tissue is first treated with fusion protein and then with D221699(Anti-ARL8A Antibody) at dilution 1/80.

