

## ARL2BP RABBIT PAB

货号: S218980

产品全名: ARL2BP 兔多抗

基因符号: BART; RP66; BART1

**UNIPROT ID:** Q9Y2Y0 (Gene Accession - BC003087)

**背景:** ADP-ribosylation factor (ARF)-like proteins (ARLs) comprise a functionally distinct group of the ARF family of RAS-related GTPases. The protein encoded by this gene binds to ARL2.GTP with high affinity but does not interact with ARL2.GDP, activated ARF, or RHO proteins. The lack of detectable membrane association of this protein or ARL2 upon activation of ARL2 is suggestive of actions distinct from those of the ARFs. This protein is considered to be the first ARL2-specific effector identified, due to its interaction with ARL2.GTP but lack of ARL2 GTPase-activating protein activity.

**抗原:** Fusion protein of human ARL2BP

**经过测试的应用:** ELISA, WB, IHC

**推荐稀释比:** IHC: 20-100; WB: 200-1000; ELISA: 5000-10000

**种属反应性:** Rabbit

**克隆性:** Rabbit Polyclonal

**亚型:** Immunogen-specific rabbit IgG

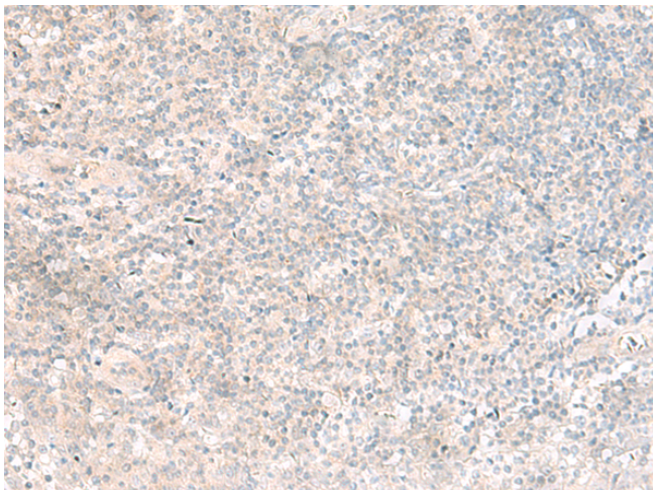
**纯化:** Antigen affinity purification

**种属反应性:** Human, Mouse, Rat

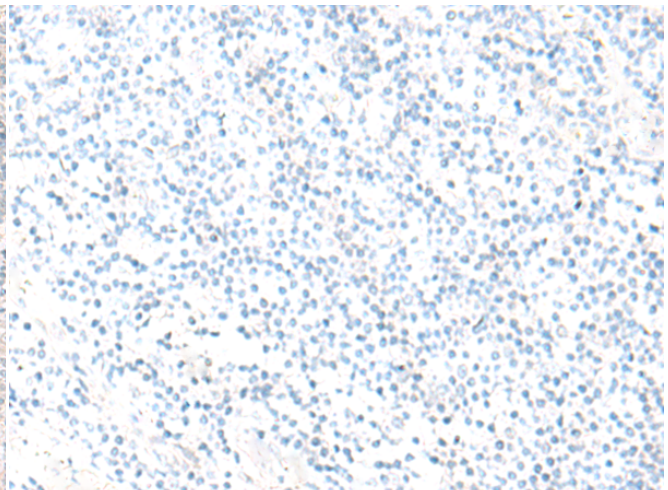
**成分:** PBS (without Mg<sup>2+</sup> and Ca<sup>2+</sup>), pH 7.4, 150 mM NaCl, 0.05% Sodium Azide and 40% glycerol

**研究领域:** Signal Transduction

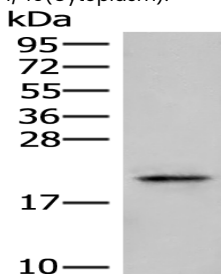
**储存和运输:** Store at -20°C. Avoid repeated freezing and thawing



Immunohistochemistry analysis of paraffin embedded Human tonsil tissue using 218980 (ARL2BP Antibody) at a dilution of 1/45 (Cytoplasm).



In comparison with the IHC on the left, the same paraffin-embedded Human tonsil tissue is first treated with the fusion protein and then with 218980 (Anti-ARL2BP Antibody) at dilution 1/45.



Gel: 12% SDS-PAGE, Lysate: 40 µg;

Lane: Human fetal brain tissue lysate;

Primary antibody: 218980 (ARL2BP Antibody) at dilution 1/300;

Secondary antibody: Goat anti rabbit IgG at 1/8000 dilution;

Exposure time: 1 minute