

ARL2 RABBIT PAB

货号: S213364

产品全名: ARL2 兔多抗

基因符号: ARFL2; MRCS1

UNIPROT ID: P36404 (Gene Accession - NP_001658)

背景: This gene encodes a small GTP-binding protein of the RAS superfamily which functions as an ADP-ribosylation factor (ARF). The encoded protein is one of a functionally distinct group of ARF-like genes.

抗原: Synthetic peptide of human ARL2

经过测试的应用: ELISA, WB, IHC

推荐稀释比: IHC: 50-200; WB: 200-1000; ELISA: 5000-10000

种属反应性: Rabbit

克隆性: Rabbit Polyclonal

亚型: Immunogen-specific rabbit IgG

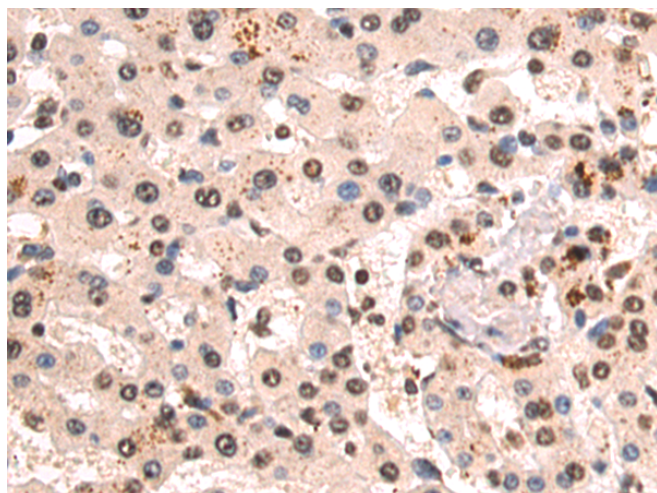
纯化: Antigen affinity purification

种属反应性: Human, Mouse, Rat

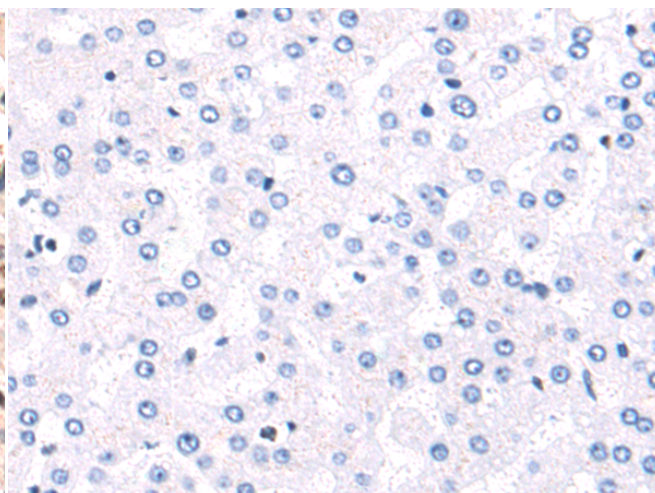
成分: PBS (without Mg²⁺ and Ca²⁺), pH 7.4, 150 mM NaCl, 0.05% Sodium Azide and 40% glycerol

研究领域: Signal Transduction

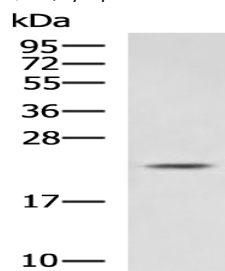
储存和运输: Store at -20°C. Avoid repeated freezing and thawing



Immunohistochemistry analysis of paraffin embedded Human liver cancer tissue using 213364 (ARL2 Antibody) at a dilution of 1/50 (Cytoplasm and Nucleus).



In comparison with the IHC on the left, the same paraffin-embedded Human liver cancer tissue is first treated with the synthetic peptide and then with 213364 (Anti-ARL2 Antibody) at dilution 1/50.



Gel: 12% SDS-PAGE, Lysate: 40 µg;

Lane: A549 cell lysate;

Primary antibody: 213364 (ARL2 Antibody) at dilution 1/400;

Secondary antibody: HRP-conjugated Goat anti rabbit IgG at 1/5000 dilution;

Exposure time: 30 seconds