

## ARL11 RABBIT PAB

货号: S217186

产品全名: ARL11 兔多抗

基因符号: ARLTS1

**UNIPROT ID:** Q969Q4 (Gene Accession - BC013150)

**背景:** This gene encodes a tumor suppressor related to the ADP-ribosylation factor (ARF) family of proteins. The encoded protein may play a role in apoptosis in a caspase-dependent manner. Polymorphisms in this gene have been associated with some familial cancers.

**抗原:** Fusion protein of human ARL11

**经过测试的应用:** ELISA, IHC

**推荐稀释比:** IHC: 50-200; ELISA: 1000-5000

**种属反应性:** Rabbit

**克隆性:** Rabbit Polyclonal

**亚型:** Immunogen-specific rabbit IgG

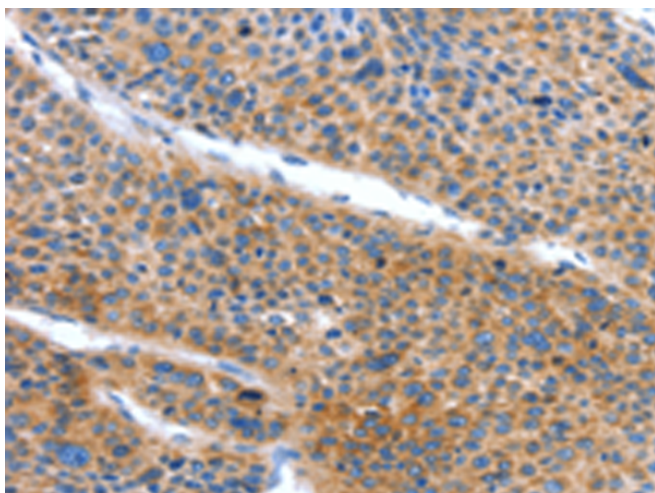
**纯化:** Antigen affinity purification

**种属反应性:** Human

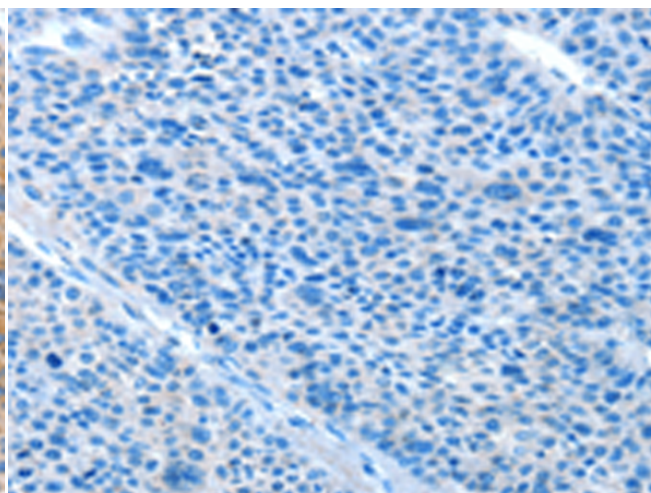
**成分:** PBS (without Mg<sup>2+</sup> and Ca<sup>2+</sup>), pH 7.4, 150 mM NaCl, 0.05% Sodium Azide and 40% glycerol

**研究领域:** Signal Transduction, Cancer

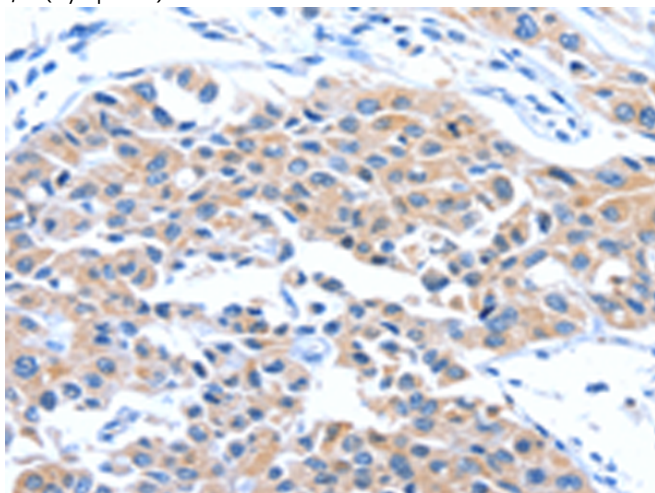
**储存和运输:** Store at -20°C. Avoid repeated freezing and thawing



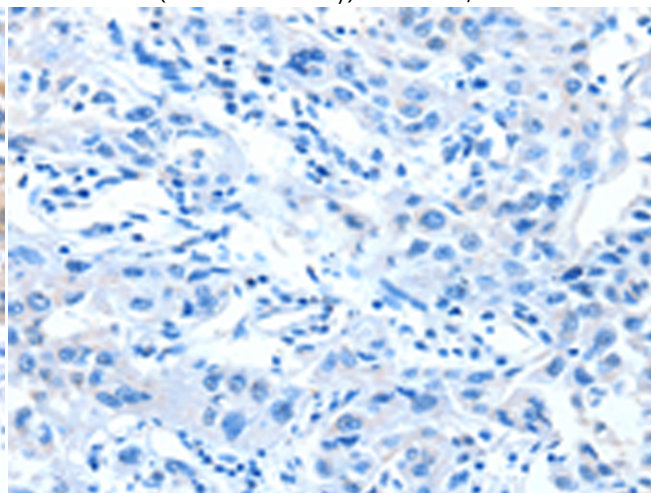
Immunohistochemistry analysis of paraffin embedded Human liver cancer tissue using 217186(ARL11 Antibody) at a dilution of 1/50(Cytoplasm).



In comparison with the IHC on the left, the same paraffin-embedded Human liver cancer tissue is first treated with the fusion protein and then with 217186(Anti-ARL11 Antibody) at dilution 1/50.



The image on the left is immunohistochemistry of paraffin-embedded Human lung cancer tissue using 217186(Anti-ARL11 Antibody) at a dilution of 1/50.



In comparison with the IHC on the left, the same paraffin-embedded Human lung cancer tissue is first treated with fusion protein and then with D221946(Anti-ARL11 Antibody) at dilution 1/50.



# Product Description

Pioneering GTPase and Oncogene Product Development since 2010

---