

## ARIH1 RABBIT PAB

货号: S215541

产品全名: ARIH1 兔多抗

基因符号: ARI; HARI; HHARI; UBCH7BP

**UNIPROT ID:** Q9Y4X5 (Gene Accession - NP\_005735)

**背景:** ARIH1 (ariadne homolog), also known as ubiquitin conjugating enzyme E2 binding protein 1, ARI, HARI, HHARI (human homolog of *Drosophila ariadne*), MOP-6 (monocyte protein 6) or UBCH7BP (UBCH7 binding protein), is a 557 amino acid cytoplasmic protein. Expressed in a wide variety of tissues, ARIH1 contains two RING-type zinc fingers and one IBR (in-between RING fingers)-type domain. ARIH1 is believed to be involved in protein degradation and protein translation. ARIH1 interacts with UBCH7 and is thought to function as an E3 ubiquitin-protein ligase (or as a component of an E3 complex) that, characteristic of E3 ligase proteins, accepts ubiquitin (in the form of a thioester) from an E2 ubiquitin-conjugating enzyme (UBCH7) and transfers that ubiquitin residue to substrates targeted for degradation. Specifically, ARIH1 interacts with and polyubiquitylates eIF4E2, thereby targeting it for proteasomal degradation.

**抗原:** Synthetic peptide of human ARIH1

**经过测试的应用:** ELISA, IHC

**推荐稀释比:** IHC: 50-100; ELISA: 5000-10000

**种属反应性:** Rabbit

**克隆性:** Rabbit Polyclonal

**亚型:** Immunogen-specific rabbit IgG

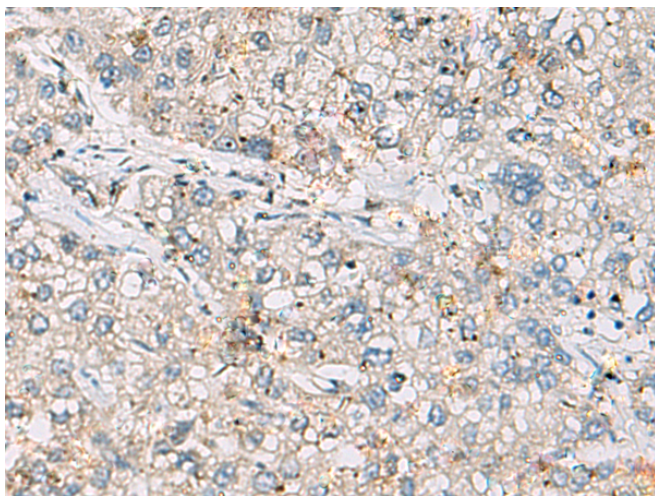
**纯化:** Antigen affinity purification

**种属反应性:** Human, Mouse

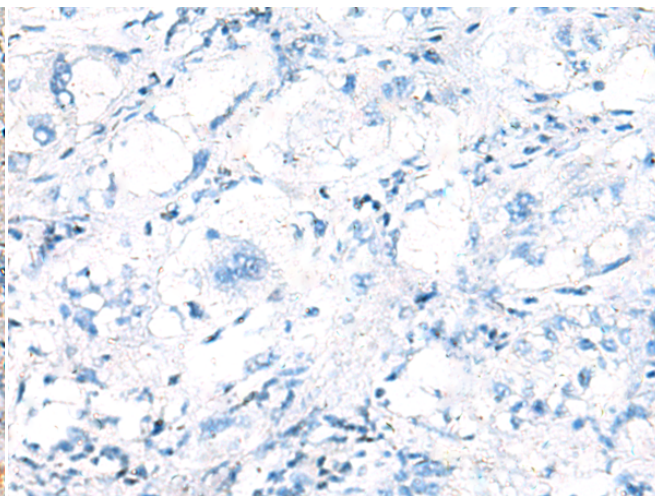
**成分:** PBS (without Mg<sup>2+</sup> and Ca<sup>2+</sup>), pH 7.4, 150 mM NaCl, 0.05% Sodium Azide and 40% glycerol

**研究领域:** Metabolism, Cell Biology

**储存和运输:** Store at -20°C. Avoid repeated freezing and thawing



Immunohistochemistry analysis of paraffin embedded Human liver cancer tissue using 215541 (ARIH1 Antibody) at a dilution of 1/30 (Cytoplasm).



In comparison with the IHC on the left, the same paraffin-embedded Human liver cancer tissue is first treated with the synthetic peptide and then with 215541 (Anti-ARIH1 Antibody) at dilution 1/30.