

ARID1B RABBIT PAB

货号: S220303

产品全名: ARID1B 兔多抗

基因符号 OSA2; 6A3-5; DAN15; MRD12; P250R; BRIGHT; BAF250B; ELD/OSA1

UNIPROT ID: Q8NFD5 (Gene Accession - NP_059989)

背景: This locus encodes an AT-rich DNA interacting domain-containing protein. The encoded protein is a component of the SWI/SNF chromatin remodeling complex and may play a role in cell-cycle activation. The protein encoded by this locus is similar to AT-rich interactive domain-containing protein 1A. These two proteins function as alternative, mutually exclusive ARID-subunits of the SWI/SNF complex. The associated complexes play opposing roles. Alternatively spliced transcript variants encoding different isoforms have been described.

抗原: Synthetic peptide of human ARID1B

经过测试的应用: ELISA, IHC

推荐稀释比: IHC: 30-150; ELISA: 5000-10000

种属反应性: Rabbit

克隆性: Rabbit Polyclonal

亚型: Immunogen-specific rabbit IgG

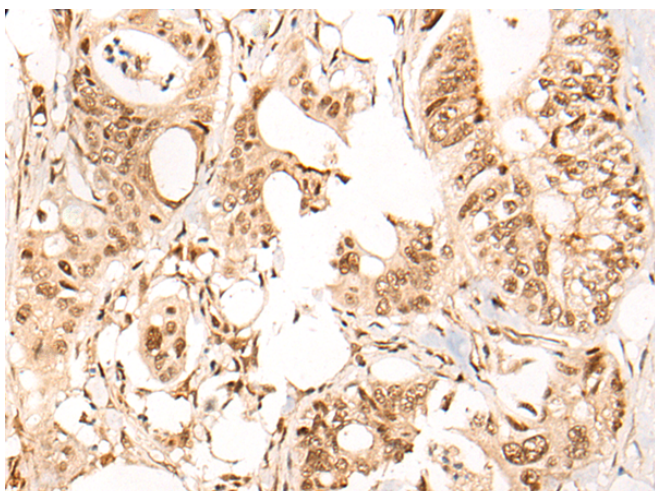
纯化: Antigen affinity purification

种属反应性: Human

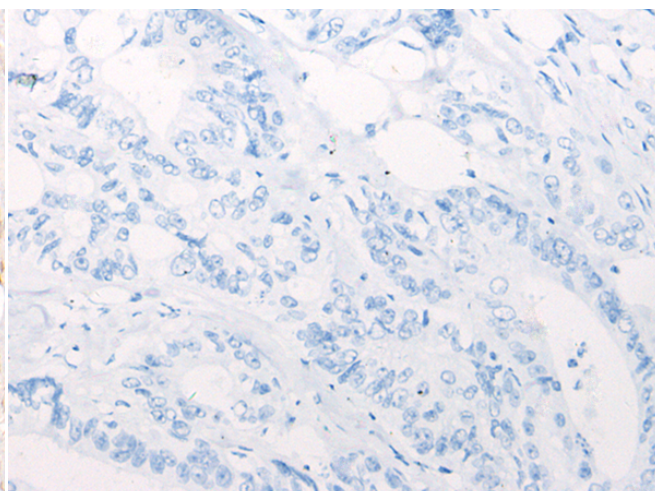
成分: PBS (without Mg²⁺ and Ca²⁺), pH 7.4, 150 mM NaCl, 0.05% Sodium Azide and 40% glycerol

研究领域: Epigenetics and Nuclear Signaling

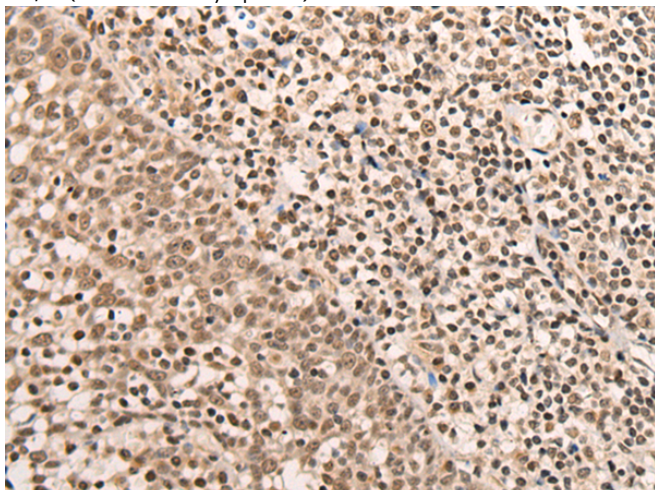
储存和运输: Store at -20°C. Avoid repeated freezing and thawing



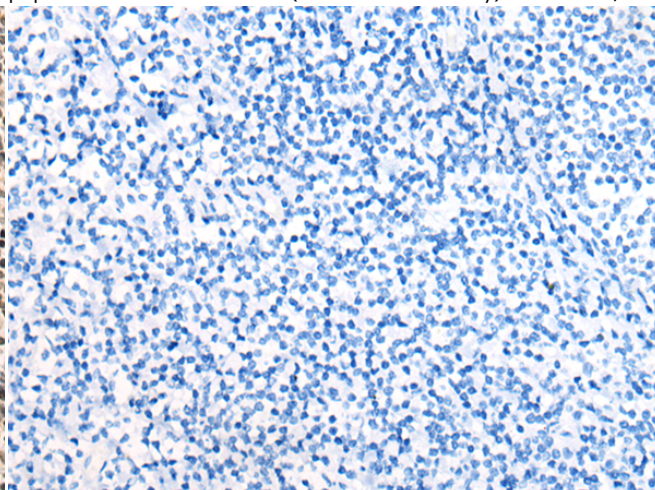
Immunohistochemistry analysis of paraffin embedded Human colorectal cancer tissue using 220303(ARID1B Antibody) at a dilution of 1/40(Nucleus and Cytoplasm).



In comparison with the IHC on the left, the same paraffin-embedded Human colorectal cancer tissue is first treated with the synthetic peptide and then with 220303(Anti-ARID1B Antibody) at dilution 1/40.



The image on the left is immunohistochemistry of paraffin-embedded Human tonsil tissue using 220303(Anti-ARID1B Antibody) at a dilution of 1/40.



In comparison with the IHC on the left, the same paraffin-embedded Human tonsil tissue is first treated with synthetic peptide and then with D261304(Anti-ARID1B Antibody) at dilution 1/40.



Product Description

Pioneering GTPase and Oncogene Product Development since 2010
