

## ARHGEF12 RABBIT PAB

货号: S220667

产品全名: ARHGEF12 兔多抗

基因符号: LARG; PRO2792

**UNIPROT ID:** Q9NZN5 (Gene Accession - NP\_056128 )

**背景:** Rho GTPases play a fundamental role in numerous cellular processes that are initiated by extracellular stimuli working through G protein-coupled receptors. The encoded protein may form a complex with G proteins and stimulate Rho-dependent signals. This protein has been observed to form a myeloid/lymphoid fusion partner in acute myeloid leukemia. Two transcript variants encoding different isoforms have been found for this gene.

**抗原:** Synthetic peptide of human ARHGEF12

**经过测试的应用:** ELISA, IHC

**推荐稀释比:** IHC: 50-200; ELISA: 2000-5000

**种属反应性:** Rabbit

**克隆性:** Rabbit Polyclonal

**亚型:** Immunogen-specific rabbit IgG

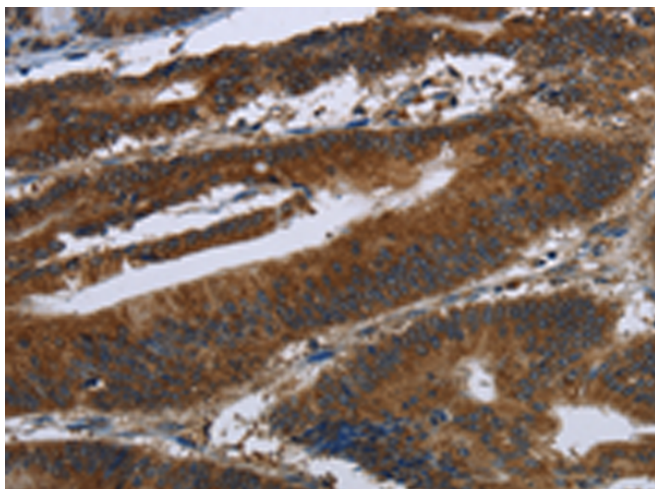
**纯化:** Antigen affinity purification

**种属反应性:** Human, Mouse

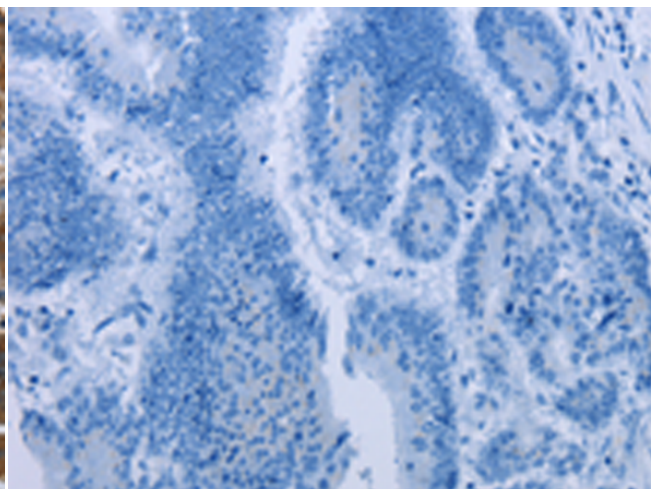
**成分:** PBS (without Mg<sup>2+</sup> and Ca<sup>2+</sup>), pH 7.4, 150 mM NaCl, 0.05% Sodium Azide and 40% glycerol

**研究领域:** Signal Transduction

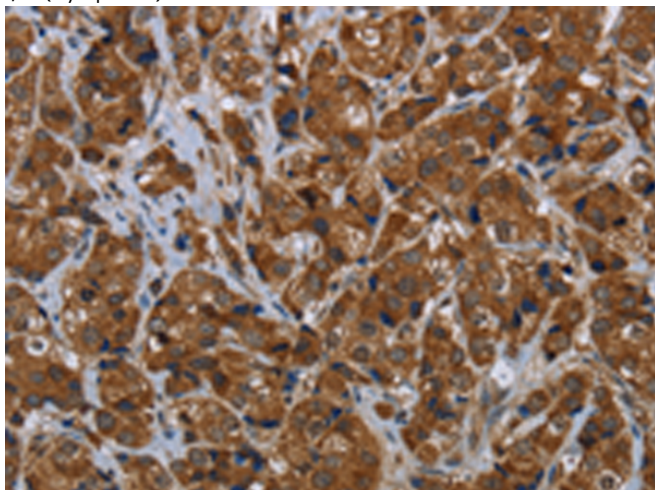
**储存和运输:** Store at -20°C. Avoid repeated freezing and thawing



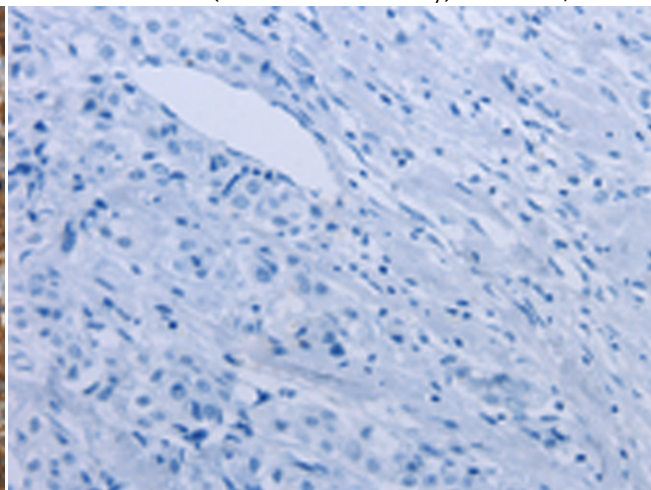
Immunohistochemistry analysis of paraffin embedded Human colon cancer tissue using 220667(ARHGEF12 Antibody) at a dilution of 1/30(Cytoplasm).



In comparison with the IHC on the left, the same paraffin-embedded Human colon cancer tissue is first treated with the synthetic peptide and then with 220667(Anti-ARHGEF12 Antibody) at dilution 1/30.



The image on the left is immunohistochemistry of paraffin-embedded Human breast cancer tissue using 220667(Anti-ARHGEF12 Antibody) at a dilution of 1/30.



In comparison with the IHC on the left, the same paraffin-embedded Human breast cancer tissue is first treated with synthetic peptide and then with D261846(Anti-ARHGEF12 Antibody) at dilution 1/30.



# Product Description

Pioneering GTPase and Oncogene Product Development since 2010

---