

## ARHGDI B RABBIT PAB

货号: S221397

产品全名: ARHGDI B 兔多抗

基因符号 D4; GDIA2; GDID4; LYGDI; Ly-GDI; RAP1GNI; RhoGDI2

**UNIPROT ID:** P52566 (Gene Accession - NP\_001166)

**背景:** Members of the Rho (or ARH) protein family and other Ras-related small GTP-binding proteins are involved in diverse cellular events, including cell signaling, proliferation, cytoskeletal organization, and secretion. The GTP-binding proteins are active only in the GTP-bound state. At least 3 classes of proteins tightly regulate cycling between the GTP-bound and GDP-bound states: GTPase-activating proteins (GAPs), guanine nucleotide-releasing factors (GRFs), and GDP-dissociation inhibitors (GDIs). The GDIs, including ARHGDI B, decrease the rate of GDP dissociation from Ras-like GTPases.

**抗原:** Synthetic peptide of human ARHGDI B

**经过测试的应用:** ELISA, WB, IHC

**推荐稀释比:** IHC: 50-100;WB: 500-2000;ELISA: 5000-10000

**种属反应性:** Rabbit

**克隆性:** Rabbit Polyclonal

**亚型:** Immunogen-specific rabbit IgG

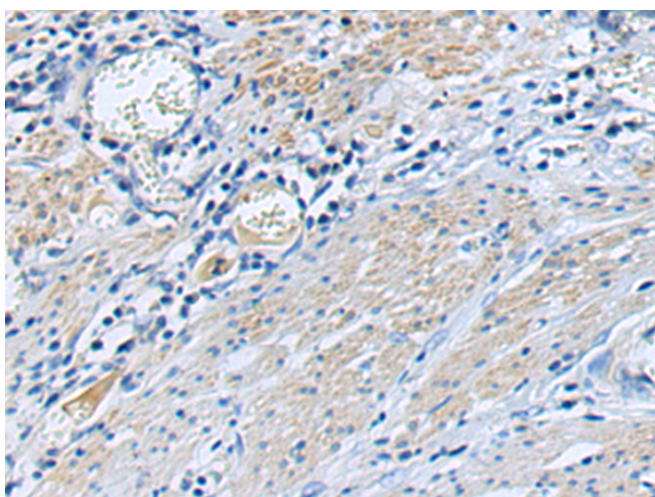
**纯化:** Antigen affinity purification

**种属反应性:** Human, Mouse, Rat

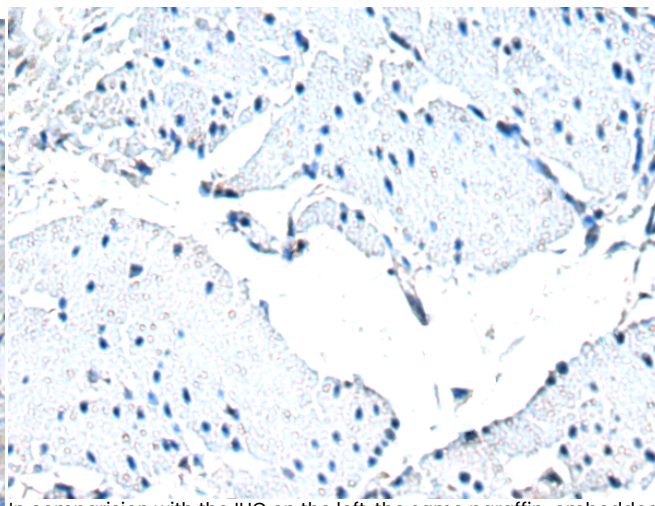
**成分:** PBS (without Mg<sup>2+</sup> and Ca<sup>2+</sup>), pH 7.4, 150 mM NaCl, 0.05% Sodium Azide and 40% glycerol

**研究领域:** Signal Transduction

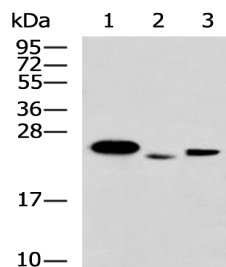
**储存和运输:** Store at -20°C. Avoid repeated freezing and thawing



Immunohistochemistry analysis of paraffin embedded Human esophagus cancer tissue using 221397 (ARHGDI B Antibody) at a dilution of 1/70 (Cytoplasm).



In comparison with the IHC on the left, the same paraffin-embedded Human esophagus cancer tissue is first treated with the synthetic peptide and then with 221397 (Anti-ARHGDI B Antibody) at dilution 1/70.



Gel: 12% SDS-PAGE, Lysate: 40 µg;

Lane 1-3: Mouse spleen tissue, Rat spleen tissue, Mouse lung tissue lysates;

Primary antibody: 221397 (ARHGDI B Antibody) at dilution 1/400;

Secondary antibody: HRP-conjugated Goat anti rabbit IgG at 1/5000 dilution;

Exposure time: 5 seconds



# Product Description

Pioneering GTPase and Oncogene Product Development since 2010

---