

ARFIP2 RABBIT PAB

货号: S219555

产品全名: ARFIP2 兔多抗

基因符号: POR1

UNIPROT ID: P53365 (Gene Accession - BC000392)

背景: Plays a role in constitutive metalloproteinase (MMP) secretion from the trans Golgi network. May have important functions during vesicle biogenesis at certain cargo subdomains, which could be predominantly utilized by secreted MMPs, such as MMP7 and MMP2 (PubMed:26507660). Participates also in autophagy by regulating the starvation-dependent trafficking of ATG9A vesicles which deliver the PI4-kinase to the autophagosome initiation site (PubMed:31204568). In addition, plays a role in NF-kappa-B inhibition by interacting with IKBKB and IKBKG (PubMed:26296658).

抗原: Fusion protein of human ARFIP2

经过测试的应用: ELISA, IHC

推荐稀释比: IHC: 50-200; ELISA: 5000-10000

种属反应性: Rabbit

克隆性: Rabbit Polyclonal

亚型: Immunogen-specific rabbit IgG

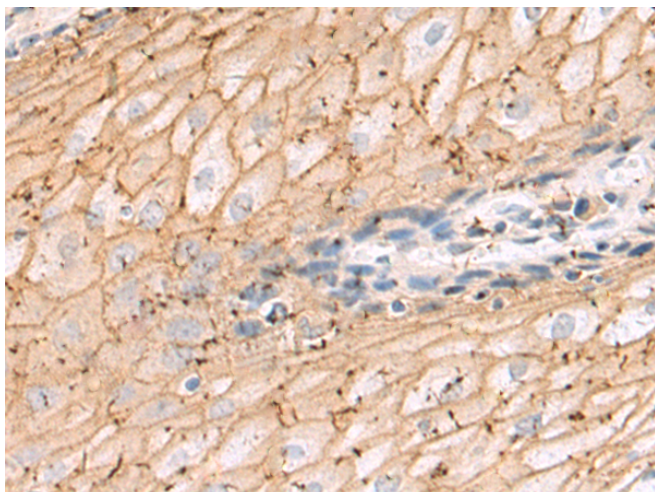
纯化: Antigen affinity purification

种属反应性: Human, Mouse, Rat

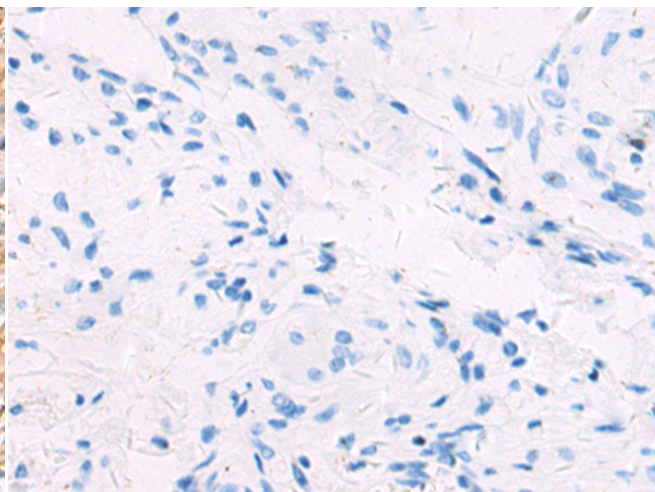
成分: PBS (without Mg²⁺ and Ca²⁺), pH 7.4, 150 mM NaCl, 0.05% Sodium Azide and 40% glycerol

研究领域: Signal Transduction

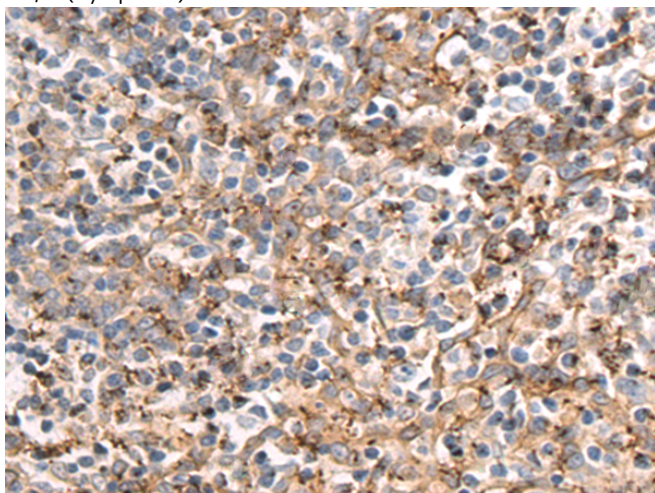
储存和运输: Store at -20°C. Avoid repeated freezing and thawing



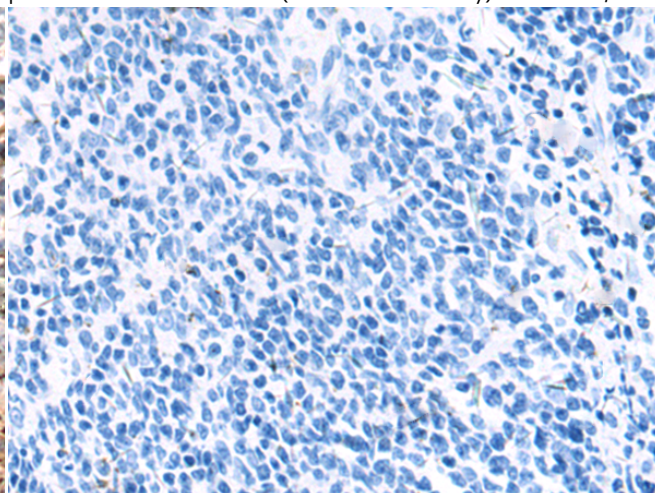
Immunohistochemistry analysis of paraffin embedded Human esophagus cancer tissue using 219555 (ARFIP2 Antibody) at a dilution of 1/70 (Cytoplasm).



In comparison with the IHC on the left, the same paraffin-embedded Human esophagus cancer tissue is first treated with the fusion protein and then with 219555 (Anti-ARFIP2 Antibody) at dilution 1/70.



The image on the left is immunohistochemistry of paraffin-embedded Human tonsil tissue using 219555 (Anti-ARFIP2 Antibody) at a dilution of 1/70.



In comparison with the IHC on the left, the same paraffin-embedded Human tonsil tissue is first treated with fusion protein and then with D227715 (Anti-ARFIP2 Antibody) at dilution 1/70.



Product Description

Pioneering GTPase and Oncogene Product Development since 2010
