

ARFGAP2 RABBIT PAB

货号: S221157

产品全名: ARFGAP2 兔多抗

基因符号 IRZ; ZFP289; ZNF289; NBLA10535

UNIPROT ID: Q8N6H7 (Gene Accession - NP_115765)

背景: ZNF289 (zinc finger protein 289), also known as ARFGAP2 (ADP-ribosylation factor GTPase activating protein 2), IRZ, Zfp289 or Nbla10535, functions as a GTPase-activating protein (GAP) for ARF family proteins. Localizing to the cytoplasmic side of the Golgi apparatus, ZNF289 contains one ARF-GAP domain and is found associated with COP-I-coated vesicles.

抗原: Synthetic peptide of human ARFGAP2

经过测试的应用: ELISA, WB, IHC

推荐稀释比: IHC: 20-100;WB: 500-2000;ELISA: 2000-5000

种属反应性: Rabbit

克隆性: Rabbit Polyclonal

亚型: Immunogen-specific rabbit IgG

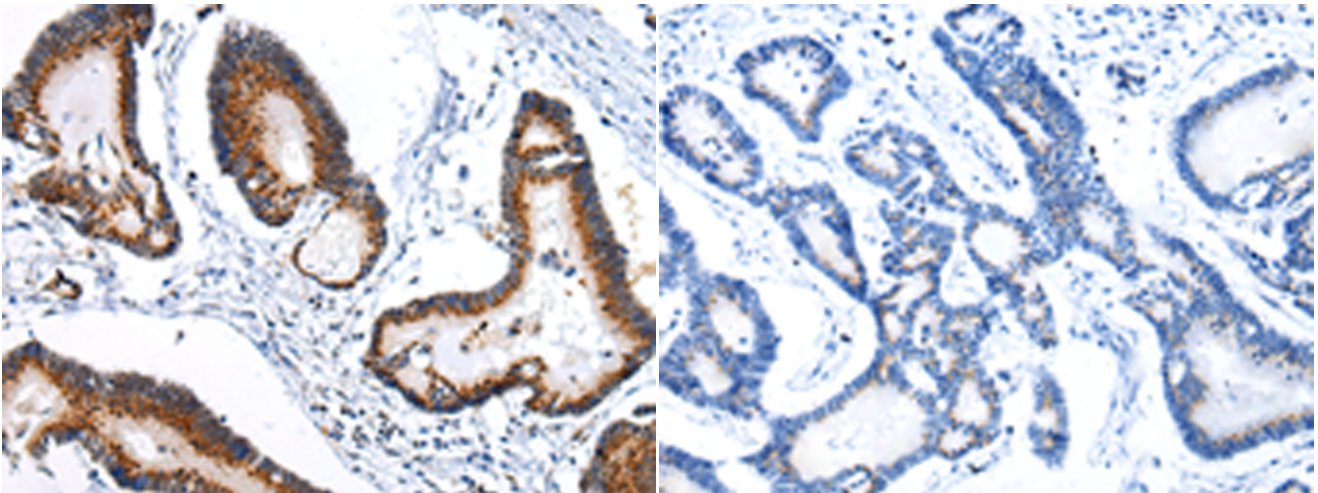
纯化: Antigen affinity purification

种属反应性: Human, Mouse, Rat

成分: PBS (without Mg²⁺ and Ca²⁺), pH 7.4, 150 mM NaCl, 0.05% Sodium Azide and 40% glycerol

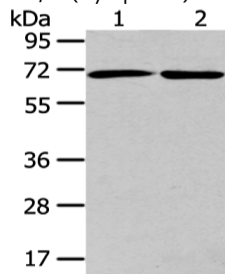
研究领域: Epigenetics and Nuclear Signaling

储存和运输: Store at -20°C. Avoid repeated freezing and thawing



Immunohistochemistry analysis of paraffin embedded Human colorectal cancer tissue using 221157(ARFGAP2 Antibody) at a dilution of 1/25(Cytoplasm).

In comparison with the IHC on the left, the same paraffin-embedded Human colorectal cancer tissue is first treated with the synthetic peptide and then with 221157(Anti-ARFGAP2 Antibody) at dilution 1/25.



Gel: 8%SDS-PAGE, Lysate: 40 µg;

Lane 1-2: A431 and hela cell;

Primary antibody: 221157(ARFGAP2 Antibody) at dilution 1/200;

Secondary antibody: Goat anti rabbit IgG at 1/8000 dilution;

Exposure time: 15 seconds