

ARF6 RABBIT PAB

货号: S216348

产品全名: ARF6 兔多抗

基因符号

UNIPROT ID: P62330 (Gene Accession - BC008918)

背景: This gene encodes a member of the human ARF gene family, which is part of the RAS superfamily. The ARF genes encode small guanine nucleotide-binding proteins that stimulate the ADP-ribosyltransferase activity of cholera toxin and play a role in vesicular trafficking and as activators of phospholipase D. The product of this gene is localized to the plasma membrane, and regulates vesicular trafficking, remodelling of membrane lipids, and signaling pathways that lead to actin remodeling. A pseudogene of this gene is located on chromosome 7.

抗原: Fusion protein of human ARF6

经过测试的应用: ELISA, WB, IHC

推荐稀释比: IHC: 25-100;WB: 200-1000;ELISA: 1000-2000

种属反应性: Rabbit

克隆性: Rabbit Polyclonal

亚型: Immunogen-specific rabbit IgG

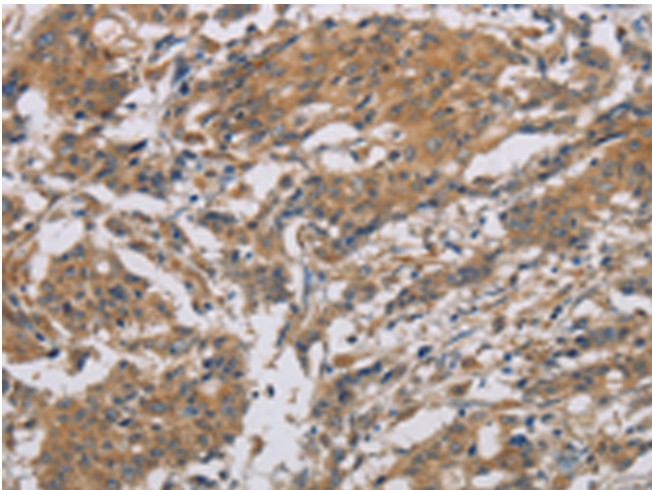
纯化: Antigen affinity purification

种属反应性: Human, Mouse, Rat

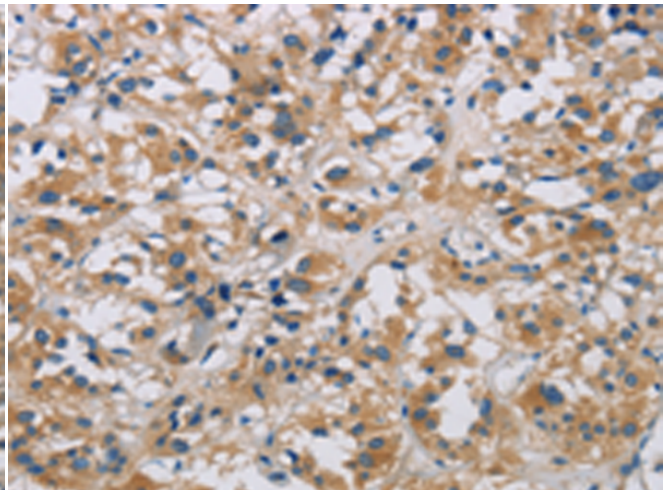
成分: PBS (without Mg²⁺ and Ca²⁺), pH 7.4, 150 mM NaCl, 0.05% Sodium Azide and 40% glycerol

研究领域: Signal Transduction

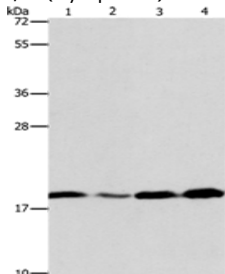
储存和运输: Store at -20°C. Avoid repeated freezing and thawing



Immunohistochemistry analysis of paraffin-embedded Human gastric cancer tissue using 216348(ARF6 Antibody) at a dilution of 1/20(Cytoplasm).



Immunohistochemistry analysis of paraffin-embedded Human thyroid cancer tissue using 216348(Anti-ARF6 Antibody) at a dilution of 1/20.



Gel: 10%SDS-PAGE, Lysate: 40 µg;
Lane 1-4: A431 cells, human liver cancer tissue, 231 cells, human fetal liver tissue;
Primary antibody: 216348(ARF6 Antibody) at dilution 1/200;
Secondary antibody: Goat anti rabbit IgG at 1/8000 dilution;
Exposure time: 20 seconds