

## ARC RABBIT PAB

货号: S210806

产品全名: ARC 兔多抗

基因符号: hArc; Arg3.1

**UNIPROT ID:** Q7LC44 (Gene Accession - BC012321)

背景: Predicted to enable mRNA binding activity. Involved in cell migration; cytoskeleton organization; and regulation of cell morphogenesis. Located in cytoplasm and plasma membrane.

抗原: Fusion protein of human ARC

经过测试的应用: ELISA, IHC

推荐稀释比: IHC: 50-200; ELISA: 5000-10000

种属反应性: Rabbit

克隆性: Rabbit Polyclonal

亚型: Immunogen-specific rabbit IgG

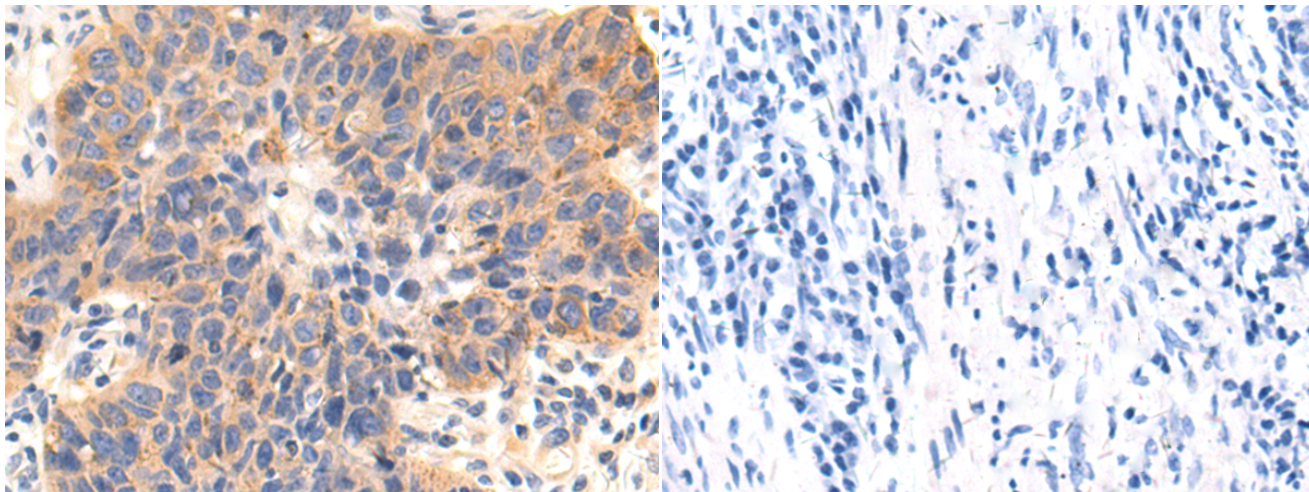
纯化: Antigen affinity purification

种属反应性: Human, Mouse, Rat

成分: PBS (without Mg<sup>2+</sup> and Ca<sup>2+</sup>), pH 7.4, 150 mM NaCl, 0.05% Sodium Azide and 40% glycerol

研究领域: Neuroscience

储存和运输: Store at -20°C. Avoid repeated freezing and thawing



Immunohistochemistry analysis of paraffin embedded Human thyroid cancer tissue using 210806(ARC Antibody) at a dilution of 1/80(Cytoplasm).

In comparison with the IHC on the left, the same paraffin-embedded Human thyroid cancer tissue is first treated with the fusion protein and then with 210806(Anti-ARC Antibody) at dilution 1/80.