

AR RABBIT PAB

货号: S213380

产品全名: AR 兔多抗

基因符号: AR; AIS; AR8; TFM; DHTR; SBMA; HYSPI; NR3C4; SMAX1; HUMARA

UNIPROT ID: P10275 (Gene Accession - NP_000035)

背景: The androgen receptor gene is more than 90 kb long and codes for a protein that has 3 major functional domains: the N-terminal domain, DNA-binding domain, and androgen-binding domain. The protein functions as a steroid-hormone activated transcription factor. Upon binding the hormone ligand, the receptor dissociates from accessory proteins, translocates into the nucleus, dimerizes, and then stimulates transcription of androgen responsive genes. This gene contains 2 polymorphic trinucleotide repeat segments that encode polyglutamine and polyglycine tracts in the N-terminal transactivation domain of its protein. Expansion of the polyglutamine tract from the normal 9-34 repeats to the pathogenic 38-62 repeats causes spinal bulbar muscular atrophy (SBMA, also known as Kennedy's disease). Mutations in this gene are also associated with complete androgen insensitivity (CAIS). Alternative splicing results in multiple transcript variants encoding different isoforms.

抗原: Synthetic peptide of human AR

经过测试的应用: ELISA, WB, IHC

推荐稀释比: IHC: 50-100; WB: 200-1000; ELISA: 5000-10000

种属反应性: Rabbit

克隆性: Rabbit Polyclonal

亚型: Immunogen-specific rabbit IgG

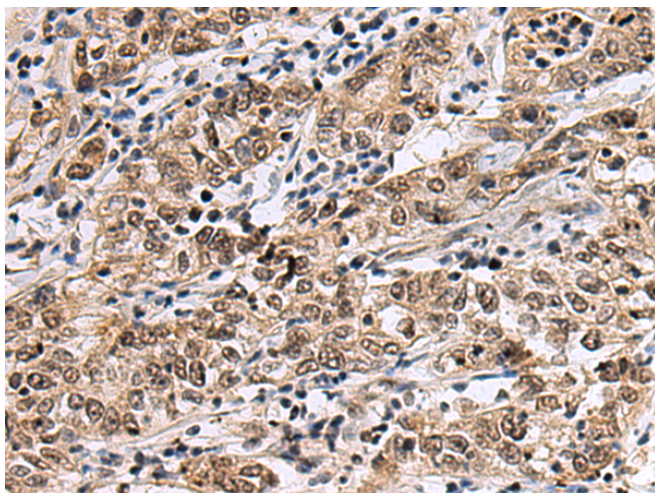
纯化: Antigen affinity purification

种属反应性: Human

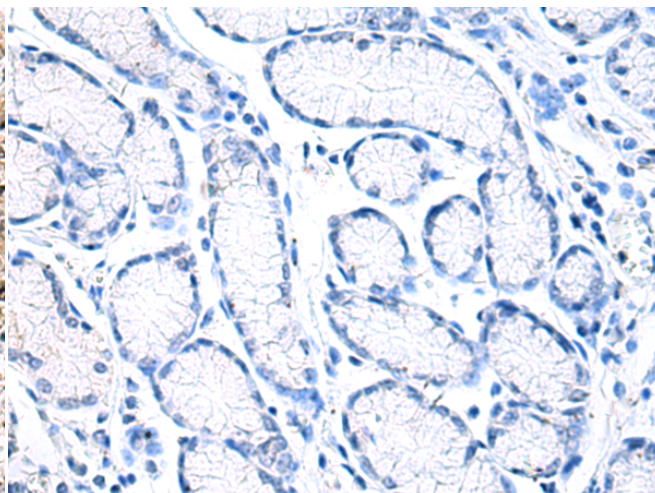
成分: PBS (without Mg²⁺ and Ca²⁺), pH 7.4, 150 mM NaCl, 0.05% Sodium Azide and 40% glycerol

研究领域: Signal Transduction, Epigenetics and Nuclear Signaling, Developmental Biology

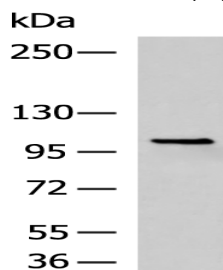
储存和运输: Store at -20°C. Avoid repeated freezing and thawing



Immunohistochemistry analysis of paraffin embedded Human gastric cancer tissue using 213380 (AR Antibody) at a dilution of 1/35 (Nucleus and Cytoplasm).



In comparison with the IHC on the left, the same paraffin-embedded Human gastric cancer tissue is first treated with the synthetic peptide and then with 213380 (Anti-AR Antibody) at dilution 1/35.



Gel: 6% SDS-PAGE, Lysate: 40 µg;

Lane: LOVO cell lysate;

Primary antibody: 213380 (AR Antibody) at dilution 1/200;

Secondary antibody: HRP-conjugated Goat anti rabbit IgG at 1/5000 dilution;

Exposure time: 40 seconds



Product Description

Pioneering GTPase and Oncogene Product Development since 2010
