

AQUAPORIN 2 RABBIT MAB

货号: N261864

产品全名: Aquaporin 2 兔单克隆抗体

基因符号 AQP-CD; WCH-CD

UNIPROT ID: P41181

背景: The basic job of aquaporin 2 is to reabsorb water from the urine while its being removed from the blood by the kidney. Aquaporin 2 is in kidney epithelial cells and usually lies dormant in intracellular vesicle membranes, but when it is needed vasopressin binds to the cell surface vasopressin receptor, activating a signaling pathway that causes the aquaporin 2 containing vesicles to fuse with the plasma membrane so the aquaporin 2 can be used by the cell.

抗原: A synthetic peptide of human Aquaporin 2

经过测试的应用: WB,IHC-P,IP

推荐稀释比: WB: 1/500-1/1000 IHC: 1/50-1/100 IP: 1/20

种属反应性: Rabbit

克隆性: Rabbit Monoclonal

克隆编号: R05-4A2

分子量: Calculated MW: 29 kDa; Observed MW: 37 kDa

亚型: IgG

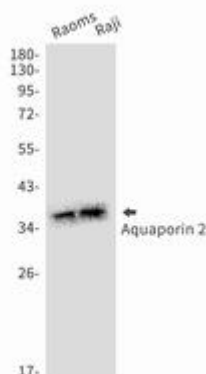
纯化: Affinity Purified

种属反应性: Human

成分: PBS (without Mg²⁺ and Ca²⁺), pH 7.3 containing 50% glycerol, 0.5% BSA and 0.02% sodium azide

研究领域: Cell Biology

储存和运输: Store at -20°C. Avoid repeated freezing and thawing



Western blot analysis of Aquaporin 2 in Raoms, Raji lysates using Aquaporin 2 antibody.



Product Description

Pioneering GTPase and Oncogene Product Development since 2010
