

AQP11 RABBIT PAB

货号: S214950

产品全名: AQP11 兔多抗

基因符号: AQPX1

UNIPROT ID: Q8NBQ7 (Gene Accession - NP_766627)

背景: Aquaporins facilitate the transport of water and small neutral solutes across cell membranes.

抗原: Synthetic peptide of human AQP11

经过测试的应用: ELISA, IHC

推荐稀释比: IHC: 20-100; ELISA: 2000-5000

种属反应性: Rabbit

克隆性: Rabbit Polyclonal

亚型: Immunogen-specific rabbit IgG

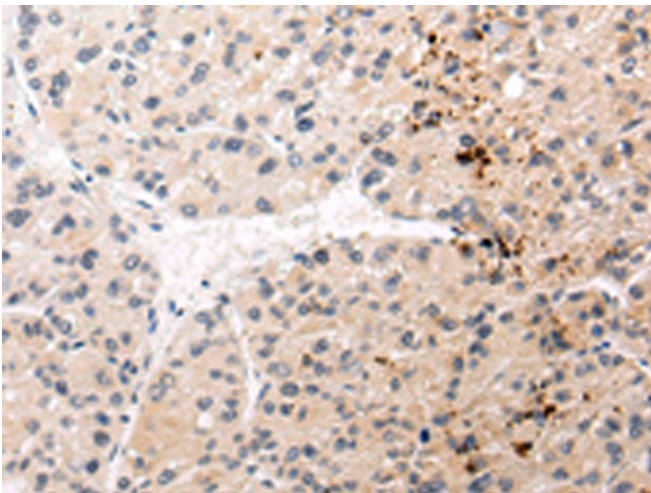
纯化: Antigen affinity purification

种属反应性: Human

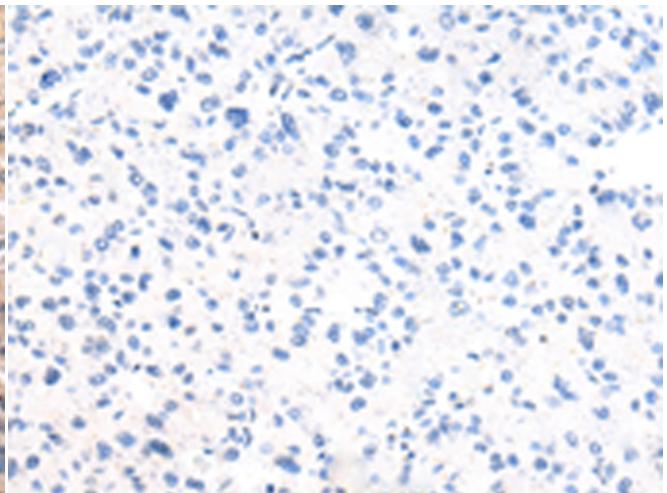
成分: PBS (without Mg²⁺ and Ca²⁺), pH 7.4, 150 mM NaCl, 0.05% Sodium Azide and 40% glycerol

研究领域: Metabolism

储存和运输: Store at -20°C. Avoid repeated freezing and thawing



Immunohistochemistry analysis of paraffin embedded Human liver cancer tissue using 214950 (AQP11 Antibody) at a dilution of 1/30 (Cytoplasm).



In comparison with the IHC on the left, the same paraffin-embedded Human liver cancer tissue is first treated with the synthetic peptide and then with 214950 (Anti-AQP11 Antibody) at dilution 1/30.