

## APPL RABBIT MAB

货号: N261861

产品全名: APPL 兔单克隆抗体

基因符号 APPL1; APPL; DIP13A; KIAA1428; DCC-interacting protein 13-alpha; Dip13-alpha; Adapter protein containing PH domain; PTB domain and leucine zipper motif 1

**UNIPROT ID:** Q9UKG1

背景: Adapter protein that interacts with proteins involved in different cellular signaling pathways. Required for the regulation of cell proliferation in response to extracellular signals from an early endosomal compartment. Links Rab5 to nuclear signal transduction. Involved in the regulation of the insulin receptor signaling pathway.

抗原: A synthetic peptide of human APPL

经过测试的应用: WB,IHC-P

推荐稀释比: WB: 1/500-1/1000 IHC: 1/50-1/100

种属反应性: Rabbit

克隆性: Rabbit Monoclonal

克隆编号: R05-8D5

分子量: Calculated MW: 80 kDa; Observed MW: 80 kDa

亚型: IgG

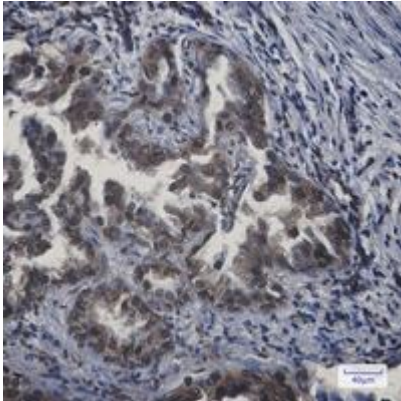
纯化: Affinity Purified

种属反应性: Human, Mouse and Rat

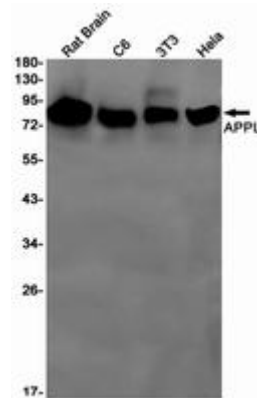
成分: PBS (without Mg<sup>2+</sup> and Ca<sup>2+</sup>), pH 7.3 containing 50% glycerol, 0.5% BSA and 0.02% sodium azide

研究领域: Cell Biology

储存和运输: Store at -20°C. Avoid repeated freezing and thawing



Immunohistochemistry analysis of paraffin-embedded Human lung cancer using APPL antibody. High-pressure and temperature Sodium Citrate pH 6.0 was used for antigen retrieval.



Western blot analysis of APPL in rat Brain, C6, 3T3, HeLa lysates using APPL antibody.