

APOL6 RABBIT PAB

货号: N225161

产品全名: ApoL6 兔多抗

基因符号 APOL6; Apolipoprotein L6; Apolipoprotein L-VI; ApoL-VI

UNIPROT ID: Q9BWW8

背景: This gene is a member of the apolipoprotein L gene family. The encoded protein is found in the cytoplasm, where it may affect the movement of lipids or allow the binding of lipids to organelles. Widely expressed; highly expressed in the uterus, fetal brain and spinal cord, also detected in heart, liver, lung, colon, spleen, thymus, prostate, placenta, adrenal gland, salivary and mammary gland.

抗原: Synthesized peptide derived from ApoL6 . at AA range: 240-320

经过测试的应用: WB,ELISA

推荐稀释比: WB: 1/500-1/1000 ELISA: 1/10000

种属反应性: Rabbit

克隆性: Rabbit Polyclonal

分子量: Calculated MW: 38 kDa; Observed MW: 38 kDa

亚型: IgG

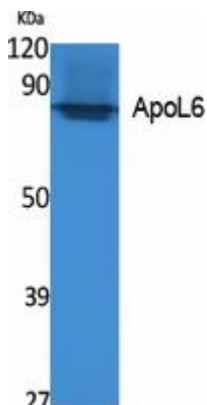
纯化: Affinity Purified

种属反应性: Human

成分: PBS (without Mg²⁺ and Ca²⁺), pH 7.3 containing 50% glycerol, 0.5% BSA and 0.02% sodium azide

研究领域: Cell Biology

储存和运输: Store at -20°C. Avoid repeated freezing and thawing



Western blot analysis of ApoL6 in K562 lysates using ApoL6 antibody.



Product Description

Pioneering GTPase and Oncogene Product Development since 2010
