

## APOL1 RABBIT PAB

货号: N226022

产品全名: ApoL1 兔多抗

基因符号 APOL1; APOL; Apolipoprotein L1; Apolipoprotein L; Apo-L; ApoL; Apolipoprotein L-I; ApoL-I

**UNIPROT ID:** O14791

背景: May play a role in lipid exchange and transport throughout the body. May participate in reverse cholesterol transport from peripheral cells to the liver.

抗原: A synthetic peptide of human Apolipoprotein L 1

经过测试的应用: WB, ICC/IF, FC, IP

推荐稀释比: WB: 1/500-1/1000 IF: 1/50-1/200 IP: 1/20 FC: 1/50-1/100

种属反应性: Rabbit

克隆性: Rabbit Polyclonal

分子量: Calculated MW: 44 kDa; Observed MW: 44 kDa

亚型: IgG

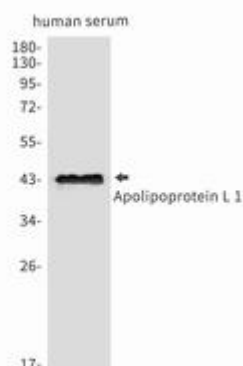
纯化: Affinity Purified

种属反应性: Human

成分: PBS (without Mg<sup>2+</sup> and Ca<sup>2+</sup>), pH 7.3 containing 50% glycerol, 0.5% BSA and 0.02% sodium azide

研究领域: Cardiovascular

储存和运输: Store at -20°C. Avoid repeated freezing and thawing



Western blot analysis of Apolipoprotein L1/APOL1 in Human serum lysates using ApoL1 antibody.